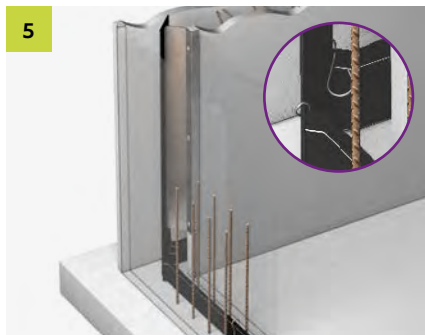
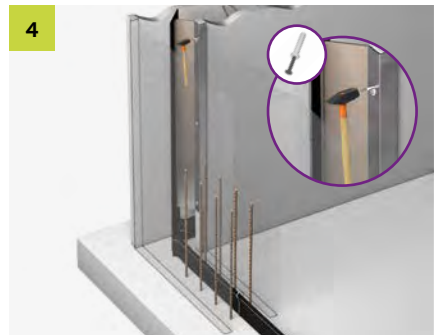
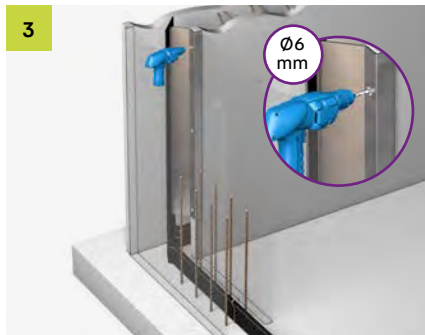


PENTAFLEX[®] FTS Eck



Einbauanleitung/Installation instruction



**Beratung
Consulting**

T +49 7742 9215-300
technik-hbau@pohlcon.com

Irrtümer und technische Änderungen vorbehalten.

Errors and technical modifications excepted.

©PohlCon | PC-LIT-MA-PENTAFLEX-FTSECK-DE-EN
09-2023 | 1. | 09-2023