

## KDU 60

Konsolhalter, schwer, 60x40 mm Fluchtweginstallation

Stahl, stück-/tauchfeuerverzinkt

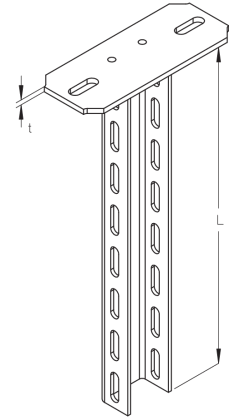
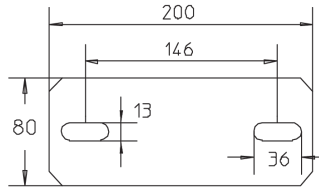
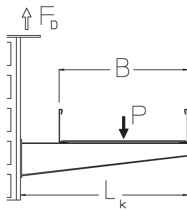
Artikel	H	B	L	H <sub>p</sub>	B <sub>p</sub>	t	G
KDU 60-02F	40 mm	60 mm	200 mm	40 mm	60 mm	6,00 mm	1,410 kg
KDU 60-03F	40 mm	60 mm	300 mm	40 mm	60 mm	6,00 mm	1,770 kg
KDU 60-04F	40 mm	60 mm	400 mm	40 mm	60 mm	6,00 mm	2,070 kg
KDU 60-05F	40 mm	60 mm	500 mm	40 mm	60 mm	6,00 mm	2,370 kg
KDU 60-06F	40 mm	60 mm	600 mm	40 mm	60 mm	6,00 mm	2,720 kg
KDU 60-07F	40 mm	60 mm	700 mm	40 mm	60 mm	6,00 mm	3,080 kg
KDU 60-08F	40 mm	60 mm	800 mm	40 mm	60 mm	6,00 mm	3,500 kg
KDU 60-09F	40 mm	60 mm	900 mm	40 mm	60 mm	6,00 mm	3,820 kg
KDU 60-10F	40 mm	60 mm	1000 mm	40 mm	60 mm	6,00 mm	4,090 kg
KDU 60-11F	40 mm	60 mm	1100 mm	40 mm	60 mm	8,00 mm	4,900 kg
KDU 60-12F	40 mm	60 mm	1200 mm	40 mm	60 mm	8,00 mm	5,200 kg
KDU 60-13F	40 mm	60 mm	1300 mm	40 mm	60 mm	8,00 mm	5,500 kg
KDU 60-14F	40 mm	60 mm	1400 mm	40 mm	60 mm	8,00 mm	5,900 kg
KDU 60-15F	40 mm	60 mm	1500 mm	40 mm	60 mm	8,00 mm	6,300 kg
KDU 60-16F	40 mm	60 mm	1600 mm	40 mm	60 mm	8,00 mm	6,600 kg
KDU 60-17F	40 mm	60 mm	1700 mm	40 mm	60 mm	8,00 mm	7,000 kg
KDU 60-18F	40 mm	60 mm	1800 mm	40 mm	60 mm	8,00 mm	7,300 kg
KDU 60-19F	40 mm	60 mm	1900 mm	40 mm	60 mm	8,00 mm	7,700 kg
KDU 60-20F	40 mm	60 mm	2000 mm	40 mm	60 mm	8,00 mm	7,800 kg



# PRODUKTINFORMATION

**H:** Höhe  
**B:** Breite  
**L:** Länge  
**H<sub>p</sub>:** Profilhöhe  
**B<sub>p</sub>:** Profilbreite  
**t:** Materialstärke  
**G:** Gewicht je Lagermengeneinheit

## DETAIL- UND ANWENDUNGSBILDER



B	L <sub>k</sub>	F <sub>D</sub> /P
mm	mm	
100	120	1,2
200	220	1,5
300	320	1,9
400	420	2,2

