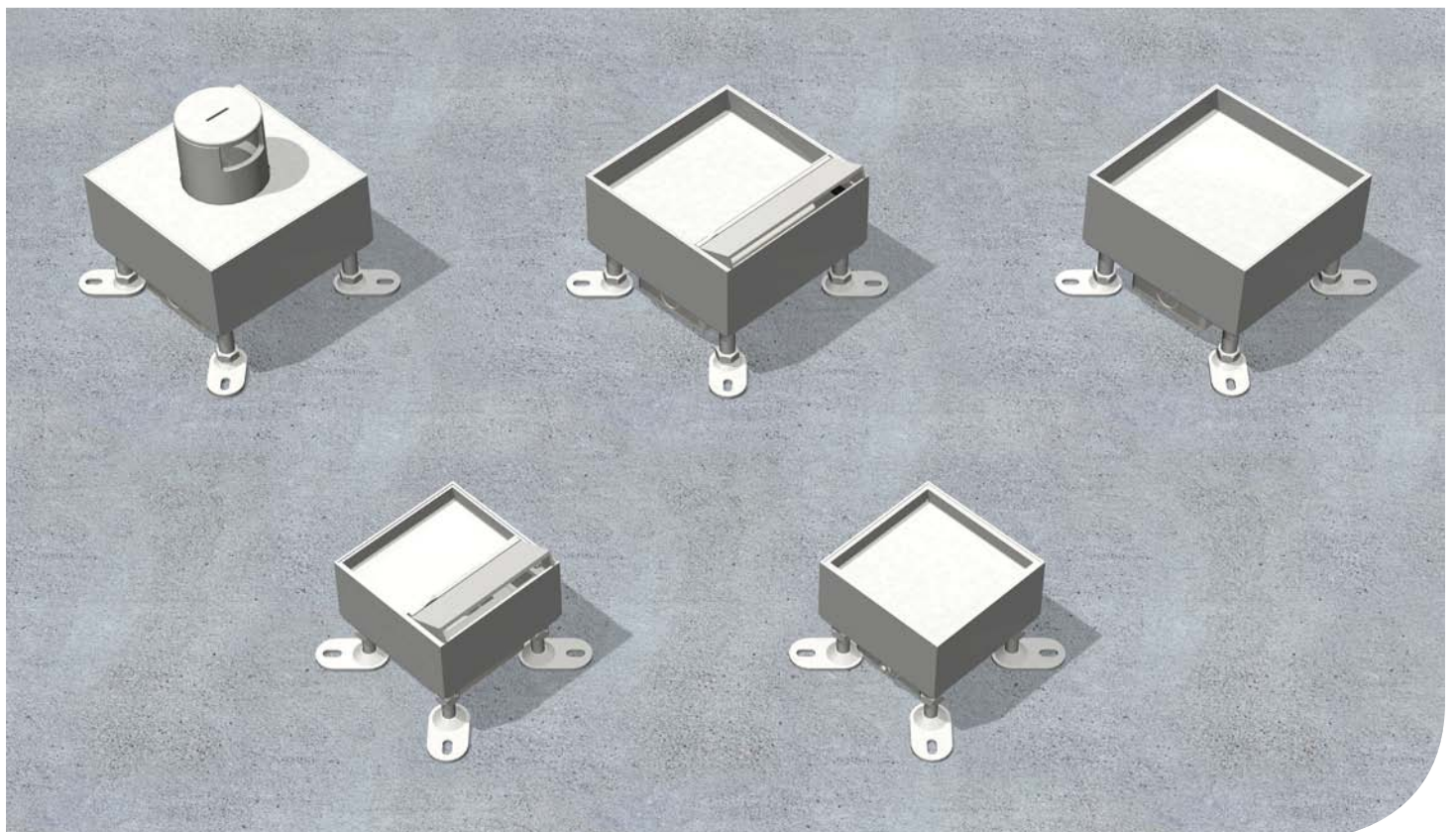
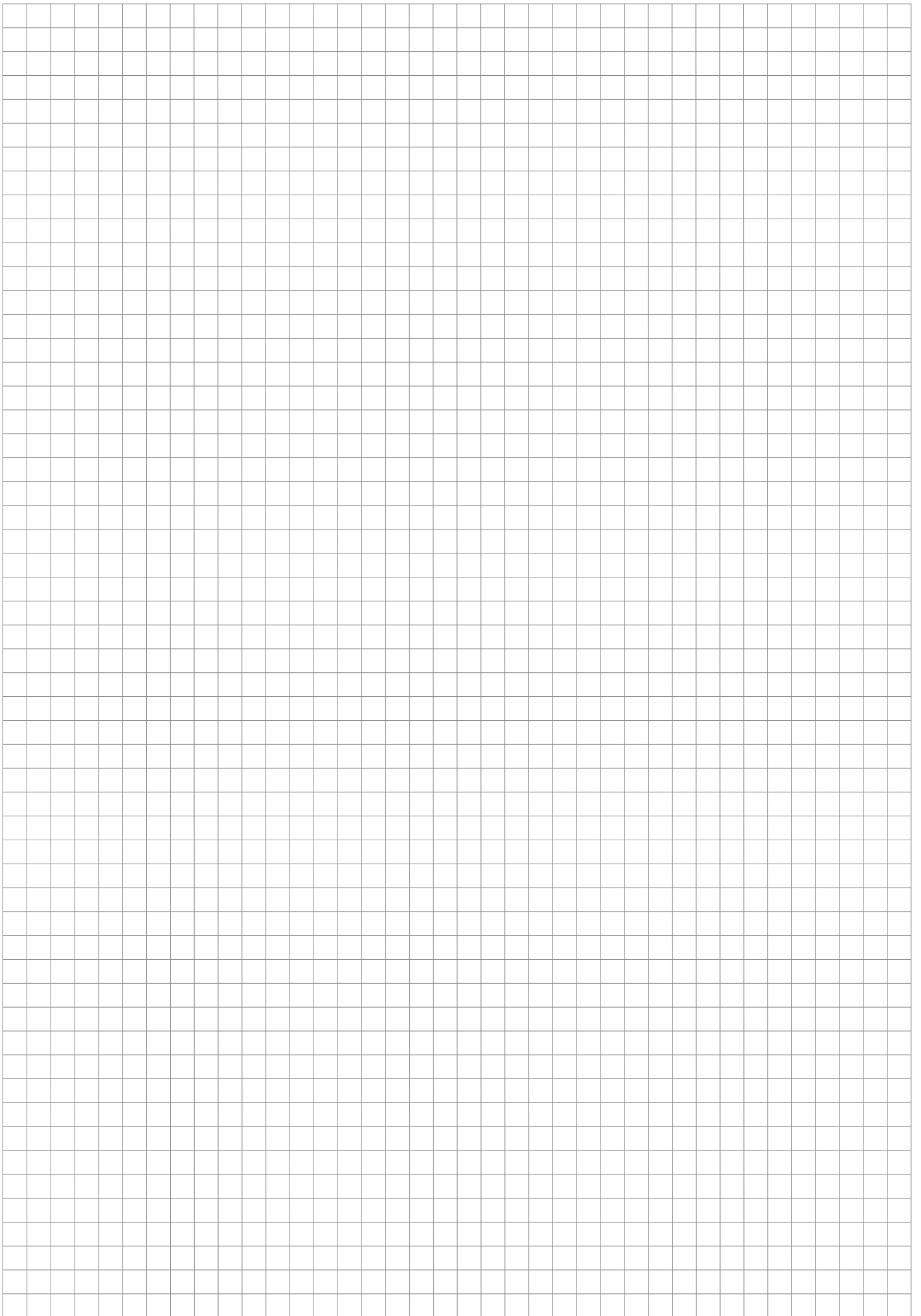




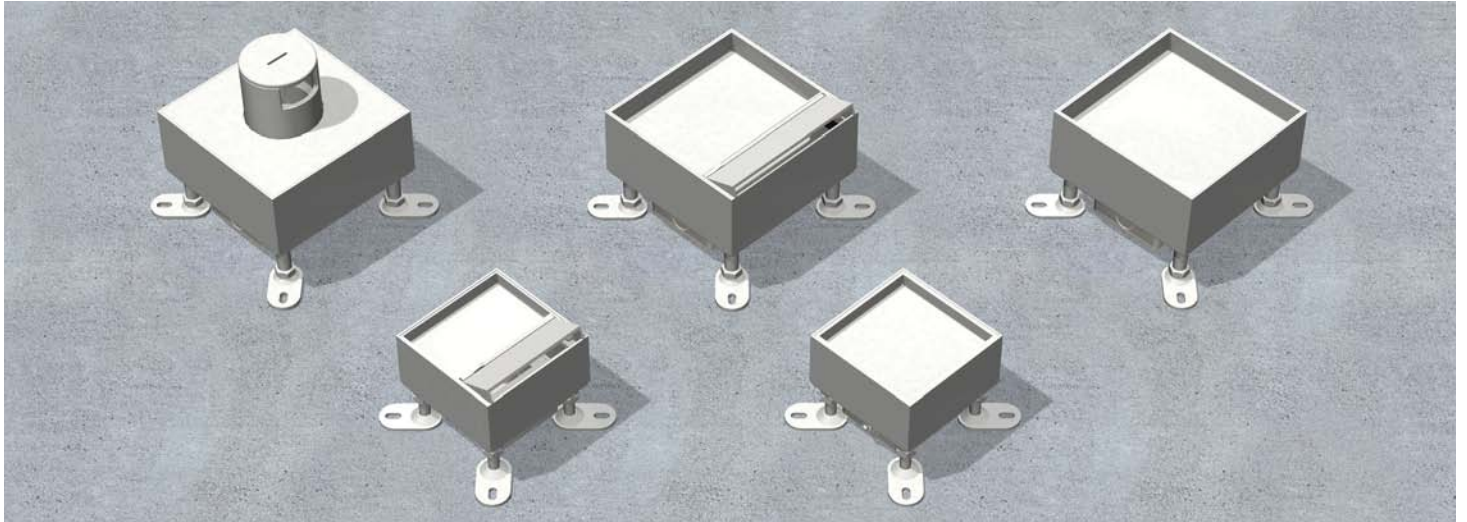
Single outlet, quadrangular
Direct mounting in screed
Assembly instruction



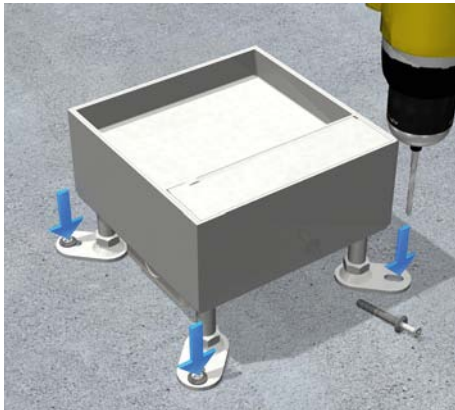


Single outlet, quadrangular | Direct mounting in screed

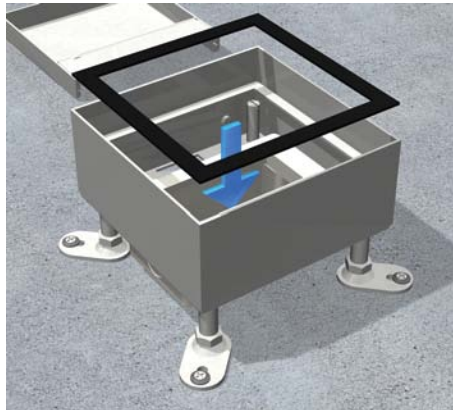
Assembly instruction



Quadrangular single outlets with outer measurements of 115 x 115 mm for the integration of up to two installation devices of 45 x 45 mm for direct screed mounting.



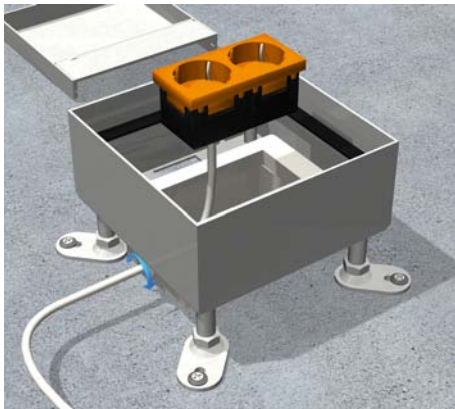
1 | Fixating
Mount the four levelling legs onto the rough concrete ceiling with nail plugs.



2 | Rubber sealing
Remove the lid and glue the rubber in place.



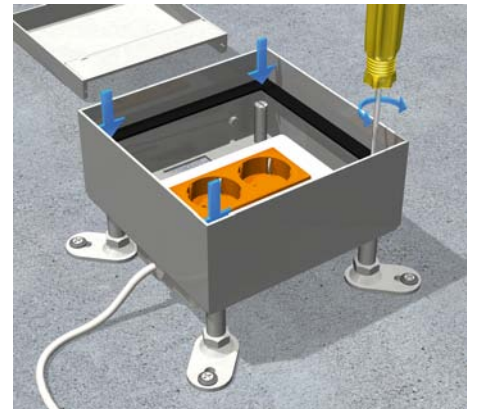
3 | Cable entry
For the cable entry use a tool to break the lateral perforation out of the frame and complete with strain relief.



4 | Safety sockets
Install electrical sockets and fuse strain relief.



5 | Assembly
Latch the sockets into the frame. Factor the single outlet into the potential equalization.



6 | Floor adjustment
Place the single outlet abreast finished floor level flush with the four levelling screws. Screed can now be applied.



Errors and technical modification subject to change. Reproduction as well as electronic duplication only with our written permission. With appearance of this print all preceding documents lose their validity.

