

# WANDA Wall duct system

Information overview





# WANDA

## Wall duct system

### Product description

WANDA is a duct system that is positioned flush in the wall both horizontally and vertically as a device installation trunking. With individually selectable outlets, the magnetic panels accommodate installation devices, power and data connections, lights, control elements for the Smart Home and much more. WANDA does not protrude into the room and is therefore a space-saving and above all aesthetic alternative to parapet ducts. Compared to empty conduits, however, WANDA offers significantly more storage space for the infrastructure. The electrical installation can be carried out pre-assembled and thus reduces the effort on the construction site.

### Application area

The WANDA wall duct is optimally suited to the requirements of modern building equipment in offices, hotels, public buildings, hospitals and care facilities or in high-quality residential construction. It can be integrated into in-situ concrete and prefabricated walls.



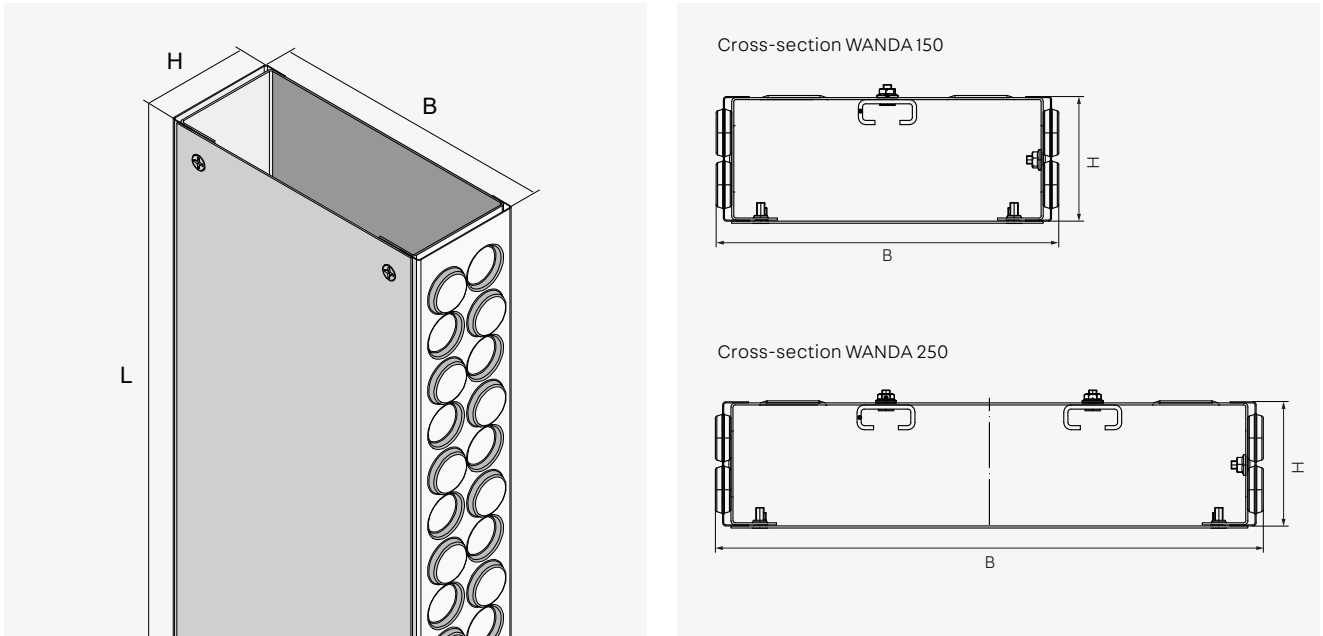
### Advantages

- Easy and variable installation of installation devices - for maximum equipment flexibility
- Individual room design through flexible cable routing
- Preservation of accessibility
- Aesthetic and space-saving alternative to parapet ducts
- For in-situ concrete and precast walls

### Available surface coatings

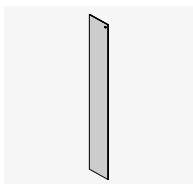
- S** Sendzimir hot-dip galvanised, according to DIN EN 10346 (strip galvanisation)

## Technical data

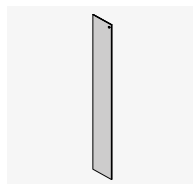


Type	Width mm	Height mm	Length mm	Weight kg
WANDA 15-60S	165	60	2.500	11,88
WANDA 25-60S	265	60	2.500	18,77

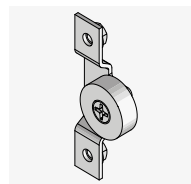
## Accessories



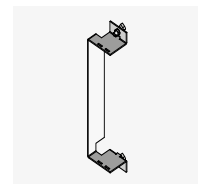
**WANDA B 15-B**  
 WANDA 150 wall duct  
 dummy cover



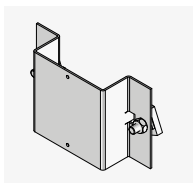
**WANDA B 25-B**  
 WANDA 250 wall duct  
 dummy cover



**UWKMH**  
 Magnetic holder



**UWKGT**  
 Device carrier



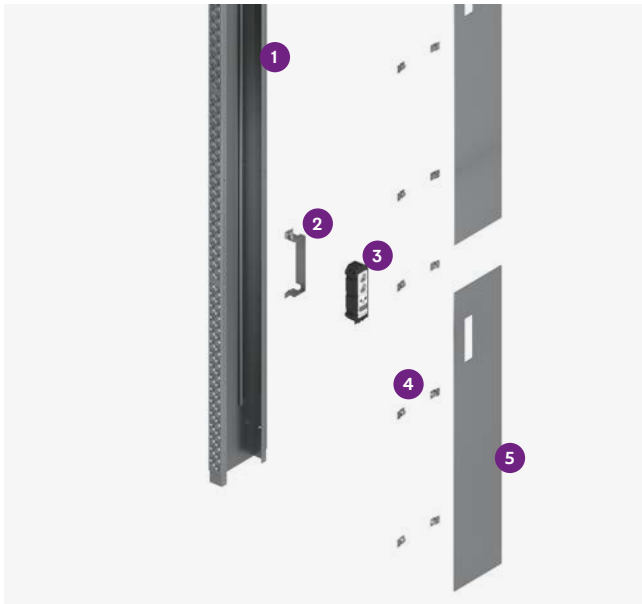
**UWKGT**  
 Thermokon device  
 carrier

## The system at a glance

The WANDA 150 or 250 basic body is the heart of the wall duct system. It is installed directly in prefabricated or in-situ concrete walls – either vertically or horizontally – and with a depth of 60 mm has no influence on the statics of standard walls. The module is prepared for use with a mounting channel so that installation devices can later be placed one below the other. The basic body is made of sendzimir hot-dip galvanised steel. It is supplemented with covers, device carriers and magnetic holders for the covers. For the installation period, the basic body is secured with an installation cover against possible damage and to stabilise the system.

With the wall duct, we offer a **sustainable solution** to provide infrastructure in the building. The covers can also be adapted to changing requirements during the use of the building without damaging the building structure. The materials used have a **long service life** and allow for **controlled deconstruction**. Through the project-specific design of the covers, we increase the **equipment flexibility** and enable a **free choice of installation and operating devices**. Subsequent positioning of the cover on the basic body **compensates for construction tolerances** and reduces the error rate.

### System structure



- 1 **Basic body**
  - Width 150 or 250 mm
- 2 **Device carrier**
  - UWKGT for mounting box UG\*
  - UWKGTT for Thermokon operating units
- 3 **Installation device**
  - Choice of switches, sockets, luminaires or control panels
- 4 **Magnetic holders**
- 5 **Cover**
  - Width 150 or 250 mm
  - Blind or with outlets
  - Made of stainless steel or with colour coating

\* The mounting boxes must be ordered separately.



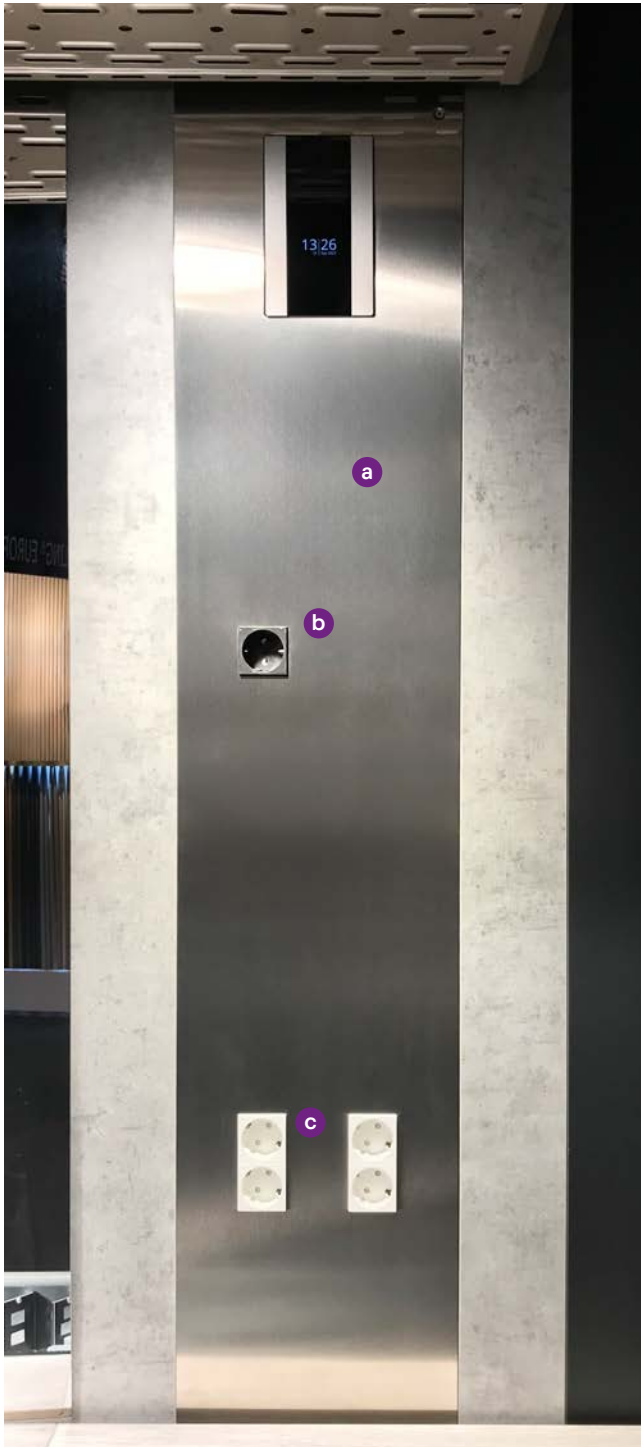
Our sales department will be happy to provide you with further information.

T +49 030 - 68 283 - 804  
sales-puk@pohlcon.com



Details on the installation of the wall duct in precast or in-situ concrete walls can be found in the WANDA installation instruction. For information on the further installation of the wall duct with the basic body already integrated in the concrete, please refer to the assembly instruction. Both instructions are also available online for download.

## Order example



Wall duct with one operating unit and five sockets



### List of the required parts:

- 1 x WANDA 25-60S (Basic body)
- 1 x WANDA B 25-B (Blind cover)
- 1 x WANDA B 25-4 (Cover with outlets) **a**
- 12 x UWKMH (Magnetic holders)
- 3 x UWKGT (Device carrier)
- 3 x UG45-4 (Mounting box)
- 1 x UST45-S 01 (Black socket) **b**
- 3 x UA-B 226 (Blind cover)
- 2 x UST45-W 2 (Double socket white) **c**
- 7 x UAA-B 45 (Blind cover 45x45mm)
- 1 x UWKGTT S (Thermokon device carrier)

Note: The thermokon operating unit must be ordered separately.

# Our synergy concept for your benefit

**With us, you can take advantage of the collective experience of three established manufacturers that combine products and expertise in one comprehensive offer. That is the PohlCon synergy concept.**



## **Full service consulting**

Our extensive network of consultants is available to answer all of your questions about our products on site. From planning to deployments, enjoy personal support from our qualified professionals.



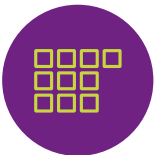
## **Digital solutions**

Our digital offerings offer targeted support in planning with our products. From tender texts through CAD details and BIM data to modern software solutions, we offer you tailored support for your planning.



## **7 areas of application**

We think in holistic solutions, which is why we have grouped our products into seven areas of application for you where you can benefit from the synergy of the PohlCon product portfolio.



## **10 product categories**

To help you find the right product in our extensive range even faster, the products are grouped into ten product categories so you can navigate clearly between our products.



## **Individual special solutions**

There's no mass produced-product on the market that is suitable for your project? We master extraordinary challenges with the many years of expertise of our three manufacturing brands in the sector of individual solutions, allowing us to realize your unique construction projects together.



*All rights reserved. This document may not be reprinted or electronically reproduced without our prior written permission. Content subject to technical change without notice. Errors and omissions excepted. The publisher shall assume no liability, irrespective of the legal grounds for this. This document supersedes all previous documentation.*

**PohlCon GmbH**

Nobelstr. 51  
12057 Berlin  
Germany

T +49 30 68283-04  
F +49 30 68283-383

[www.pohlcon.com](http://www.pohlcon.com)