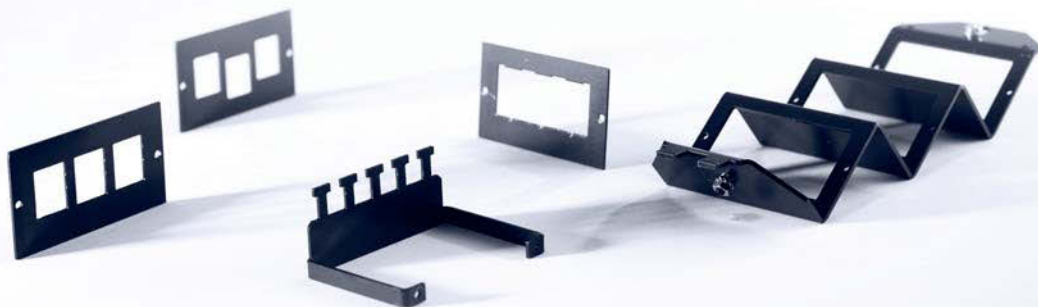
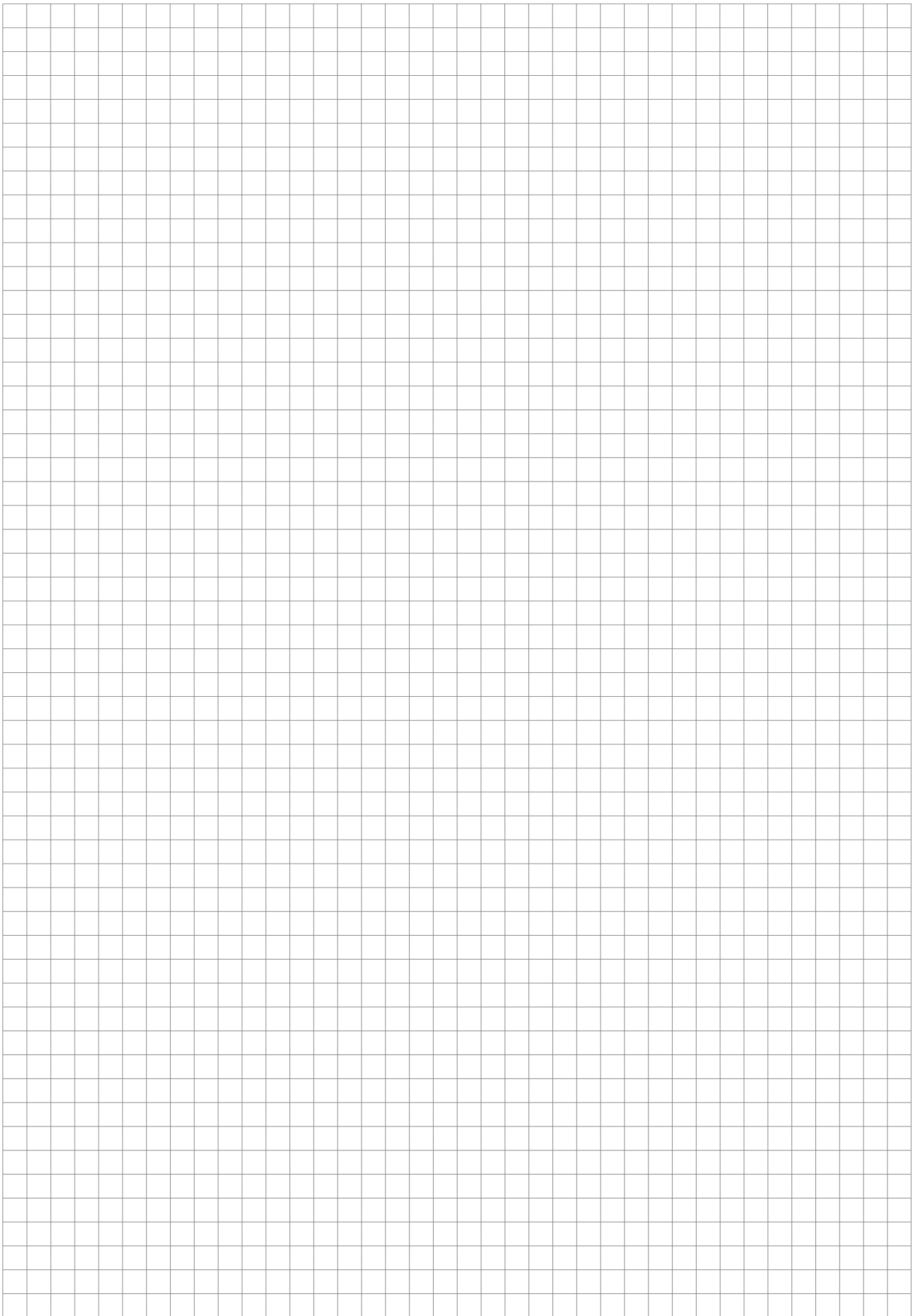




# **Data-device carriers**

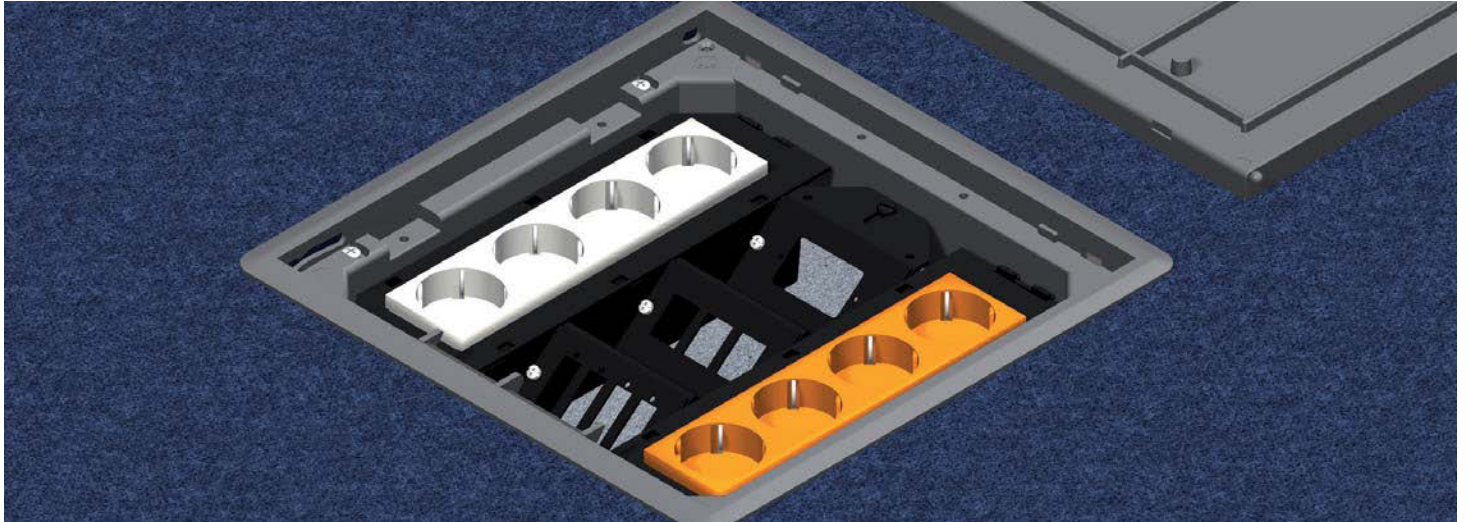
## Assembly instruction





# Data-device carriers

## Assembly instruction

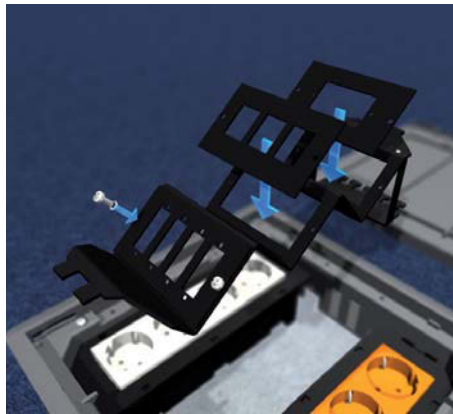


Data device carrier made of coated metal for snapping into the installation unit. For installation of up to nine single installation devices of data, audio and video technology, also for components of plug-in technology.



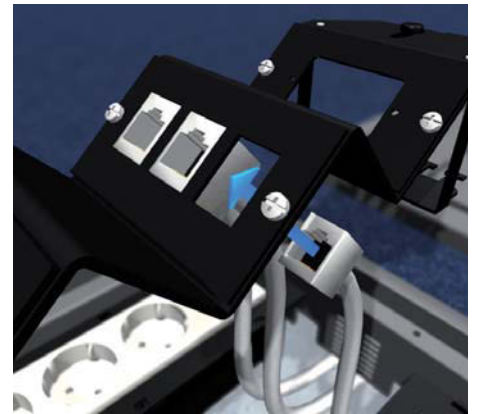
### 1 | Strain relief

Screw device carrier with strain relief tight before installation.



### 2 | Fitted board

Equip device carrier with up to three fitted boards according to the product specifications and screw tight.



### 3 | Single devices

Snap data single jack with feed cable into the fitted board from below. Screw single devices tight according to the specifications.



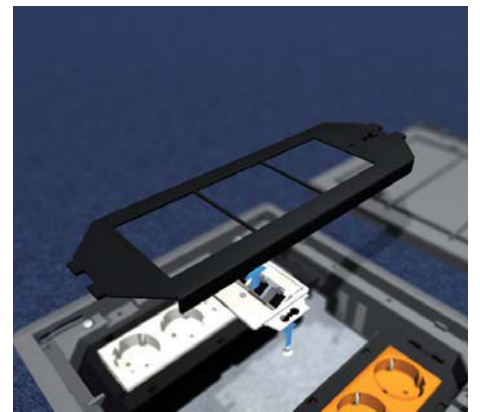
### 4 | Assembly of data-device carriers

Insert device carrier into the installation unit's lock-in leads and secure the latch on the opposite side with a screw into the lock-in.



### 5 | Tailoring

Complete device cup with the corresponding cables of manufacturer. Note the installation height.



### 6 | Device carrier

Insert installation devices with couler clip into the device carrier from below and screw tight. Insert cover from above.



Errors and technical modification subject to change, reproduction as well as electronic duplication only with our written permission. With appearance of this print all preceding documents lose their validity

