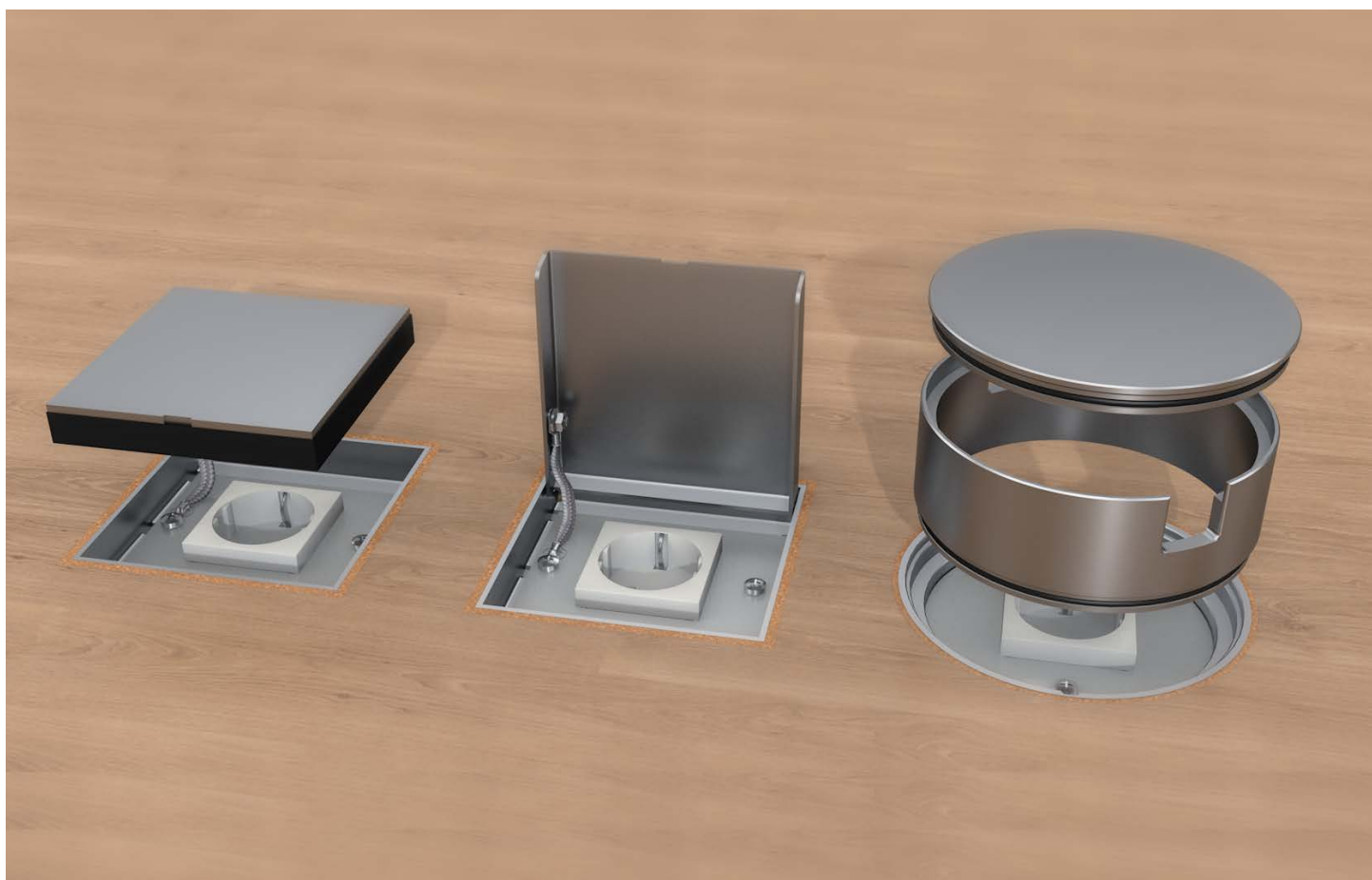
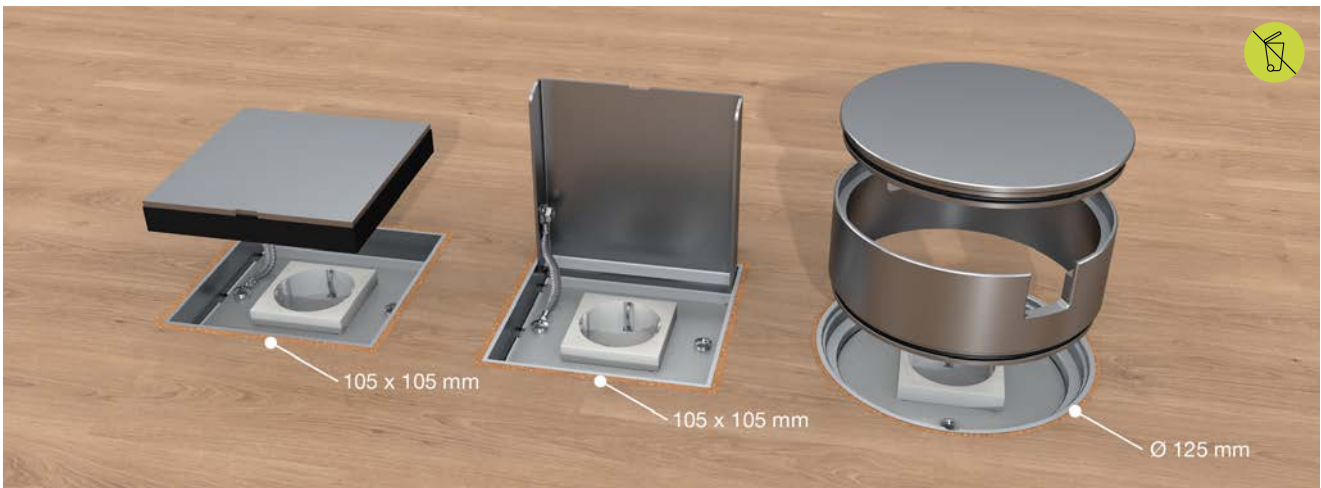


# Cleaning socket angular and round

Assembly instruction





Angular and round floor sockets in the dimensions 105 x 105 mm and Ø 125 mm for dry and wet-cleaned rooms for direct installation in the screed with low installation height. As dummy version (UBSK-VP WI E), with hinged cover (UBSK-V WI E) or as a tube (UBST-R WI-WD).



The tube and dummy versions are suitable for wet rooms, the hinged cover variant is only suitable for dry-cleaned rooms. Tube and shuttering body are optional.



Fix the empty pipes to the aligned formwork body. Before placing the screed, fix the formwork body to the unfinished floor and secure it against floating.



After the screed has hardened, carefully remove the formwork body using the ripcord.



Detach the cover plate and the earth wire from the frame of the floor socket.



Remove the perforation on the side walls of the floor socket and insert the empty conduit.



Insert the floor socket into the cavity. Ensure that the floor socket is aligned at finished floor level.



The horizontal alignment and height adjustment of the floor socket is done via the four adjusting screws. If necessary, the floor socket can be fixed to the subfloor.



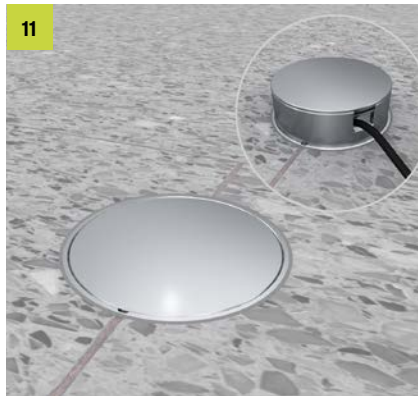
After connecting the socket, the cover plate is fixed to the frame of the floor socket again using the screws. Observe equipotential bonding.



Before placing the mortar, check the position of the floor socket. Apply the mortar without air pockets, if necessary mask the gap between the frame and the cover.



After the mortar has completely hardened and the floor covering has been laid, the floor socket can be used.



The use of the tube makes it possible to use the floor socket even in wet-cleaned rooms.

All rights reserved. Reprinting and any electronic reproduction only authorised with our written permission. Errors and technical changes reserved. No liability can be accepted by the publisher on any legal basis whatsoever. This publication supersedes all previous versions of the document, thereby rendering them invalid.

© PohlCon | PC-LIT-MA-RSD-EN | 10-2023 | 1. | 10-2023

**PohlCon GmbH**

Nobelstr. 51  
12057 Berlin  
Germany

T +49 30 68283-04  
F +49 30 68283-383

[www.pohlcon.com](http://www.pohlcon.com)