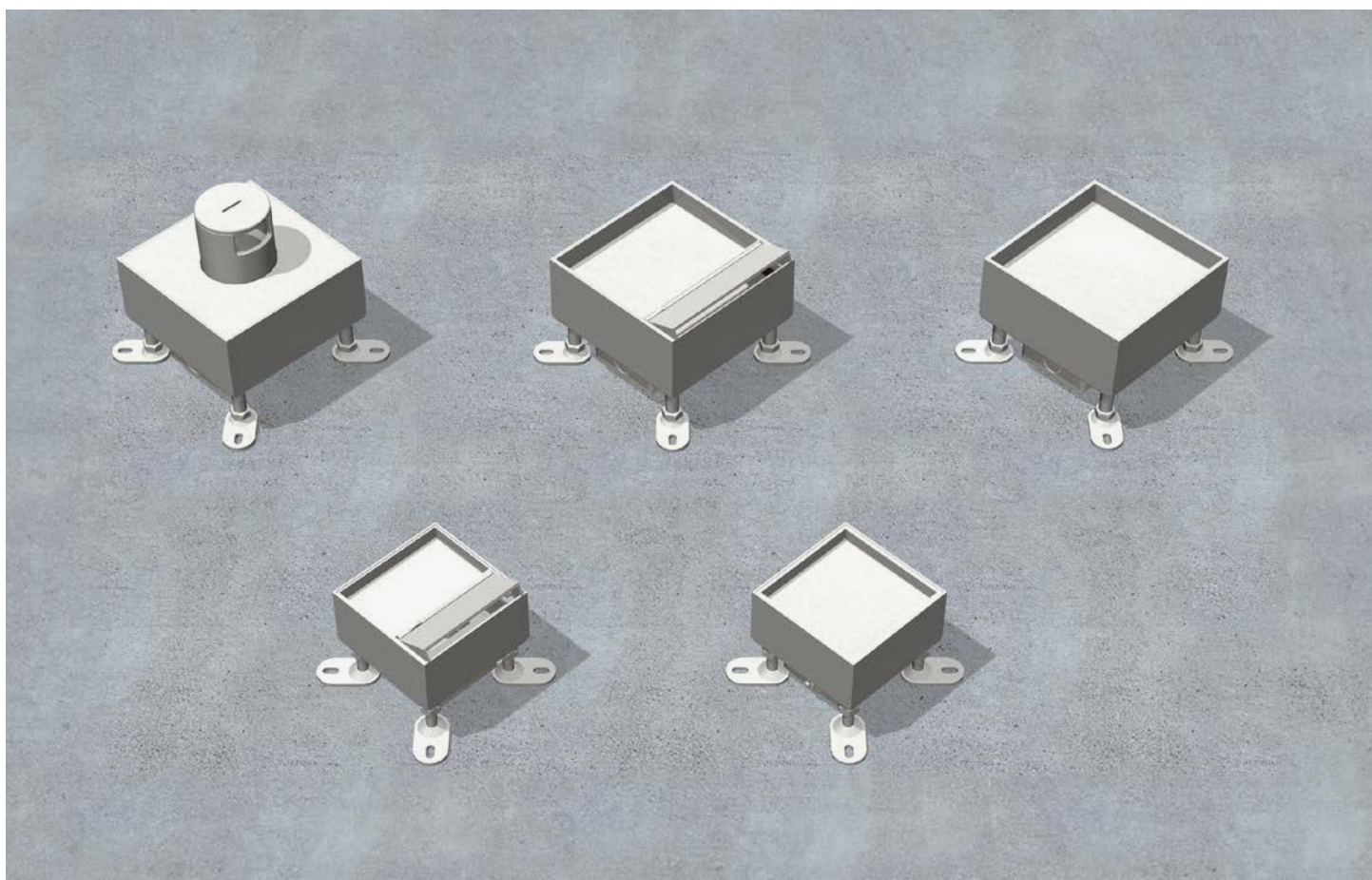
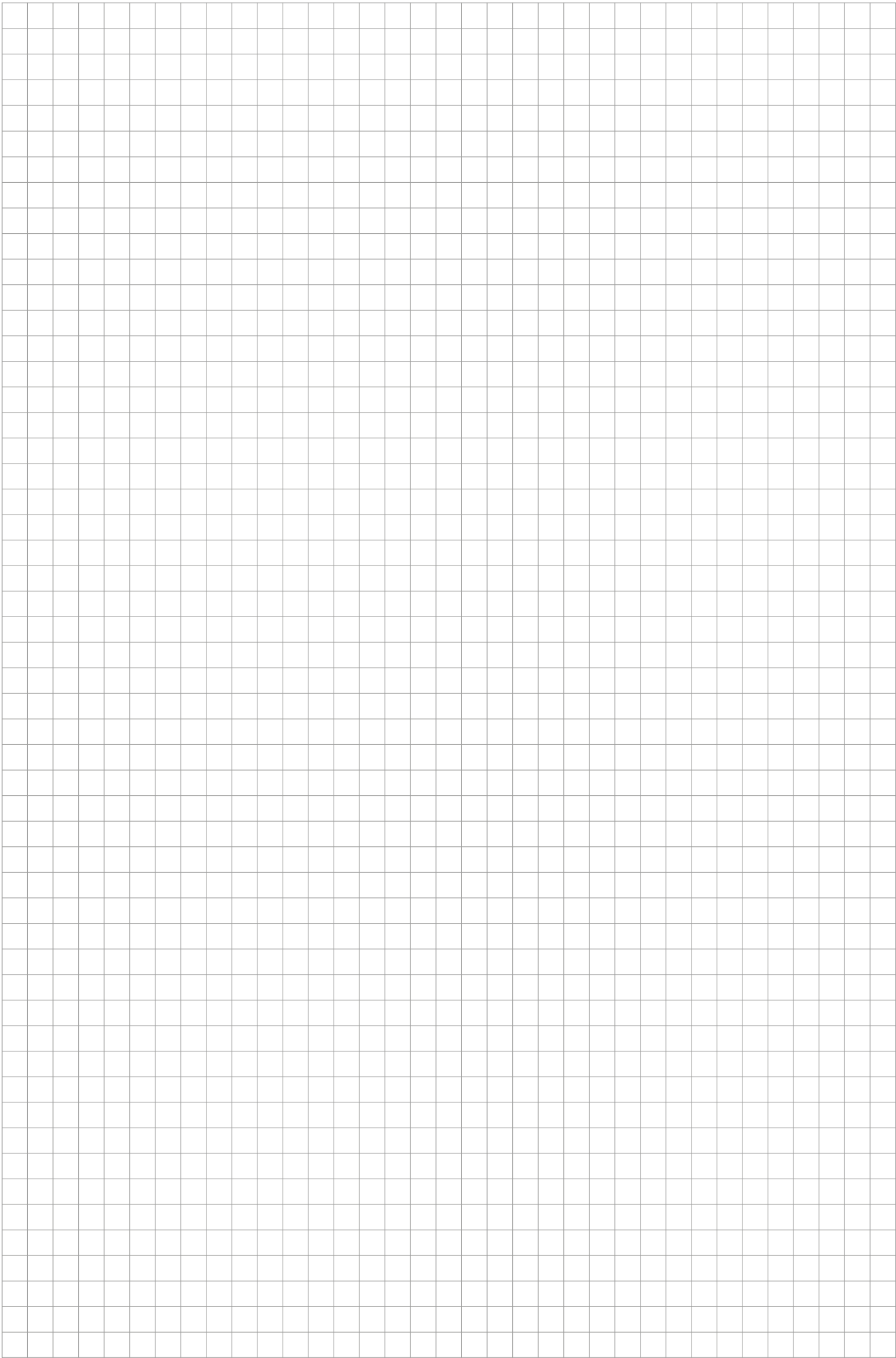
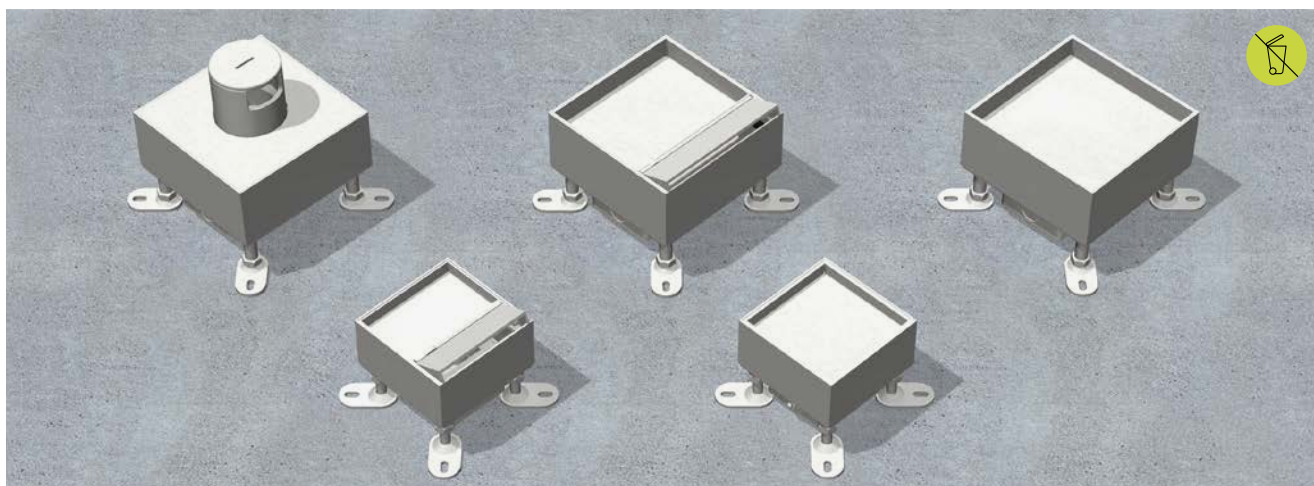


Single outlet, angular Direct mounting in screed

Assembly instruction







Quadrangular single outlets with outer measurements of 115 x 115 mm for the integration of up to two installation devices of 45 x 45 mm for direct screed mounting.



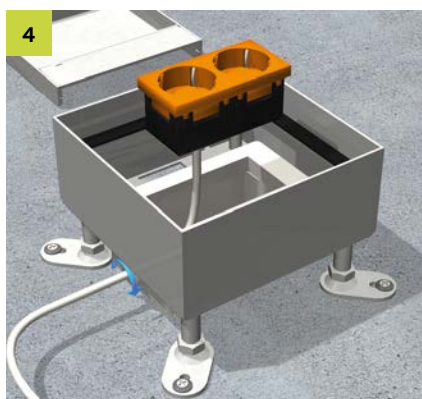
1
Fixating
Mount the four levelling legs onto the rough concrete ceiling with nail plugs.



2
Rubber sealing
Remove the lid and glue the rubber in place.



3
Cable entry
For the cable entry use a tool to break the lateral perforation out of the frame and complete with strain relief.



4
Safety sockets
Install electrical sockets and fuse strain relief.



5
Assembly
Latch the sockets into the frame. Factor the single outlet into the potential equalization.



6
Floor adjustment
Place the single outlet abreast finished floor level flush with the four levelling screws. Screed can now be applied.

All rights reserved. Reprinting and any electronic reproduction only authorised with our written permission. Errors and technical changes reserved. No liability can be accepted by the publisher on any legal basis whatsoever. This publication supersedes all previous versions of the document, thereby rendering them invalid.

© PohlCon | PC-LIT-MA-EEA-ED-EN | 04-2016 | 1. | 10-2023

PohlCon GmbH

Nobelstr. 51
12057 Berlin
Germany

T +49 30 68283-04
F +49 30 68283-383

www.pohlcon.com