

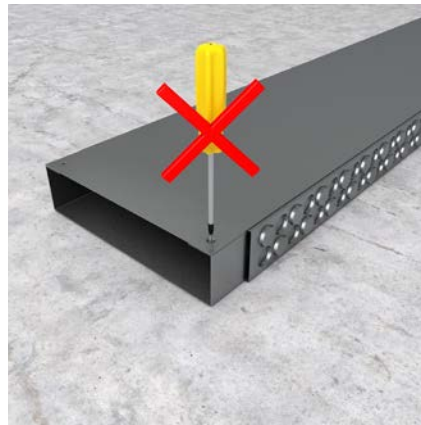
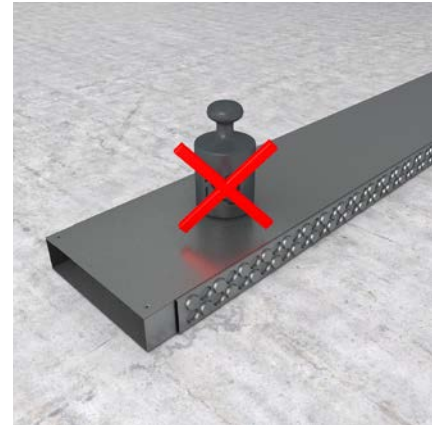
WANDA Wall duct system

Installation instruction





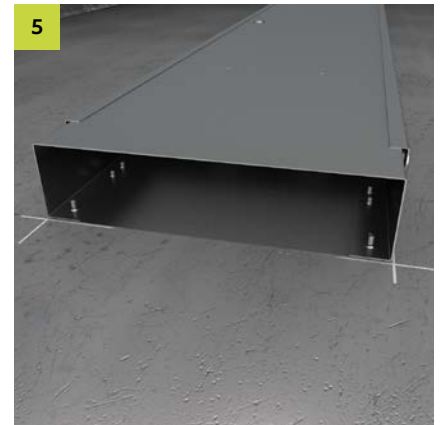
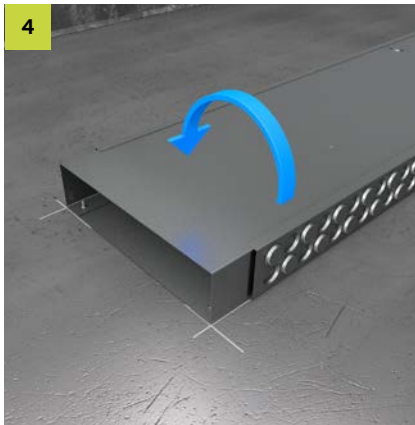
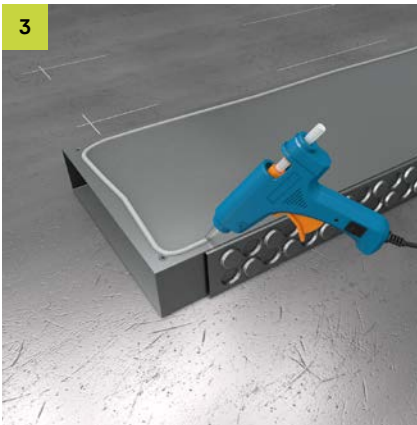
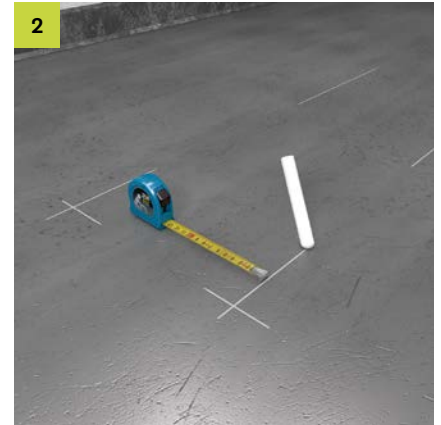
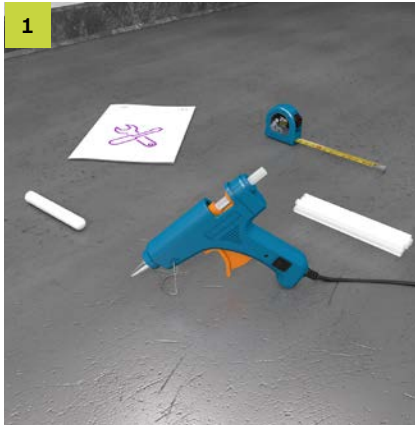
General notes



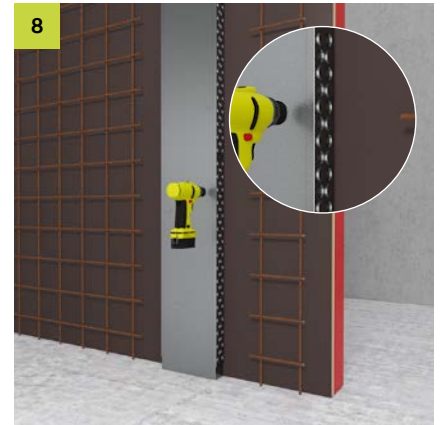
Do not remove cover



Precast plant



In-situ concrete



All rights reserved. This document may not be reprinted or electronically reproduced without our prior written permission. Content subject to technical change without notice. Errors and omissions excepted. The publisher shall assume no liability, irrespective of the legal grounds for this. This document supersedes all previous documentation.

© PohlCon | PC-LIT-EVA-WANDA-EN | 11-2023 | 1. u. | 11-2023

PohlCon GmbH

Nobelstr. 51
12057 Berlin
Germany

T +49 30 68283-04
F +49 30 68283-383

www.pohlcon.com