



Tread-resistant floor ducts

Information



System overview

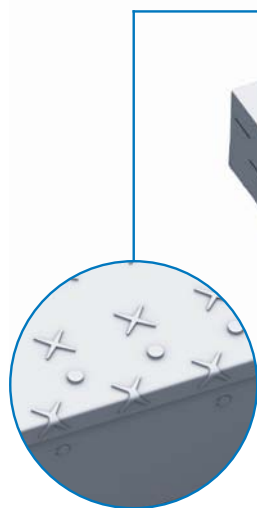
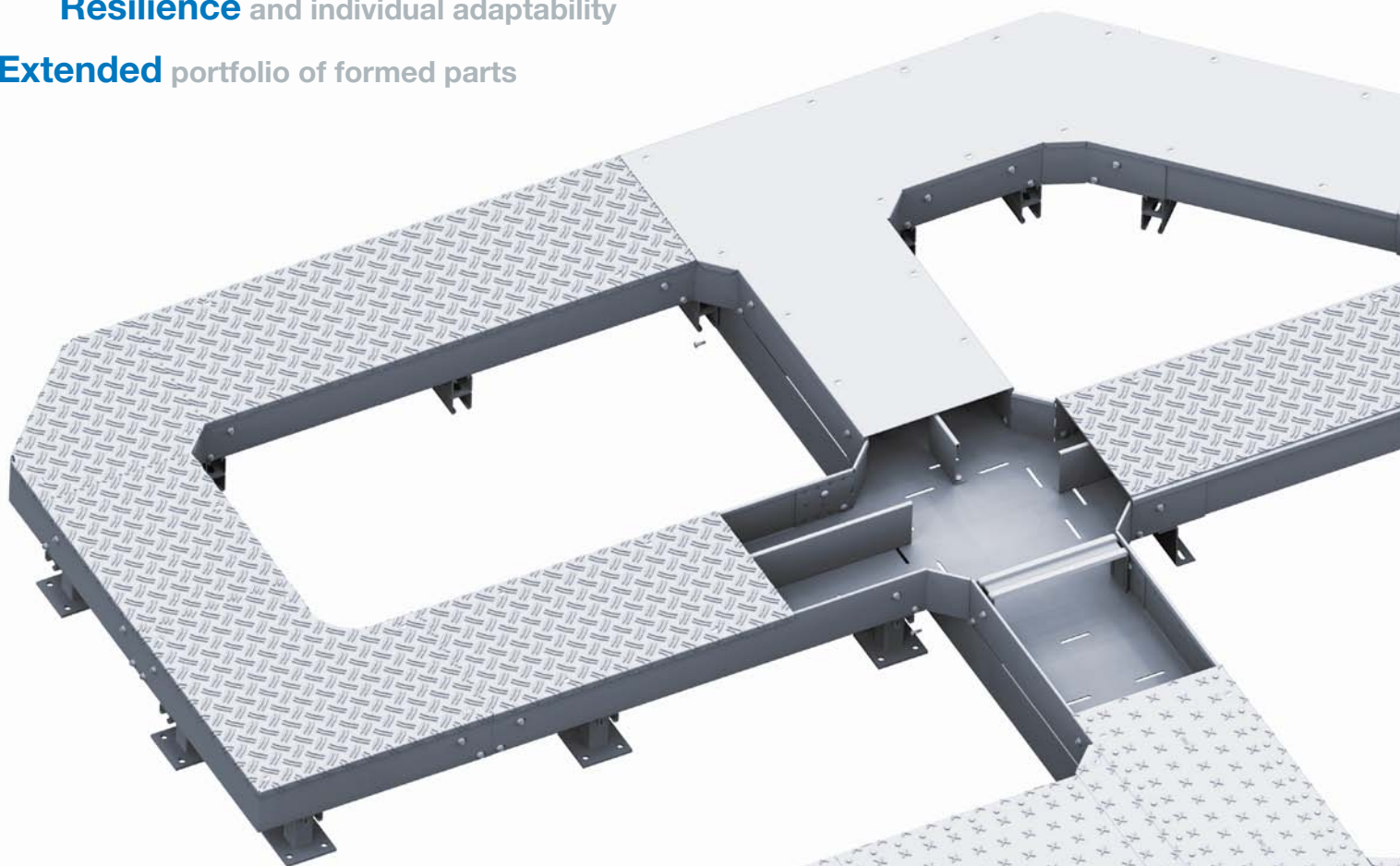
Tread-resistant floor ducts

Full assembly flexibility

up to **30%** less installation effort

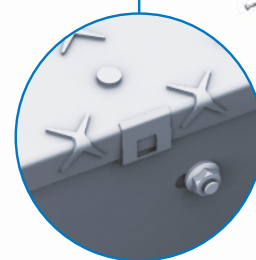
Resilience and individual adaptability

Extended portfolio of formed parts



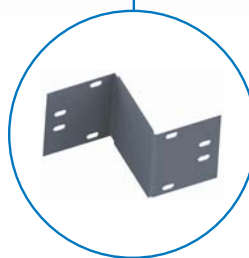
Floor duct riser bend

Vertical direction changes can be done with the floor duct riser bend (BKS).



Cover clamp

You can also choose a cover clamp (BKDHK) to attach and to take the cover off faster and simpler in the assembly.



Floor duct reducer

The floor duct reducer (BKEB) can be used to reduce the floor duct and as a finish for the cover edge.

Floor duct with knockouts and steel cover

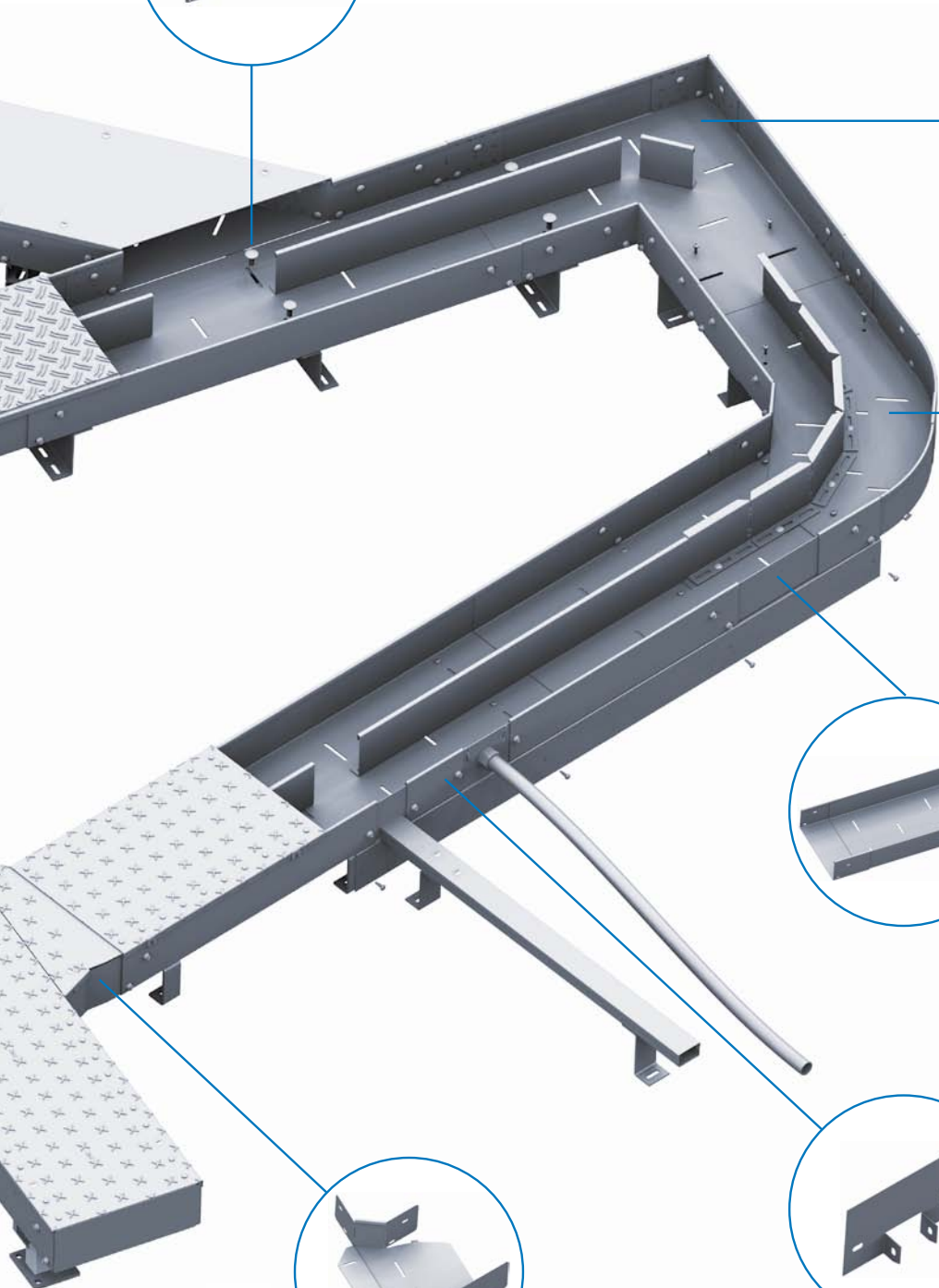
The revised floor duct (BK) makes an attachment for the equipotential bonding possible by adding additional knockouts.

The extraordinary loadable cover with an anti-slip embossing (BKD-RHP) ensures a verified resilience from 500 kg on (according to DIN EN 5005 2-2), optimal anti-slip properties combined in anti-slip class R12 (according to DIN 51130) as well as knockouts for an individual turning bolt assembly.



45° attachment branch, right/left

Using prefabricated floor ducts with mitre cut simplifies the assembly of 45°-branches.

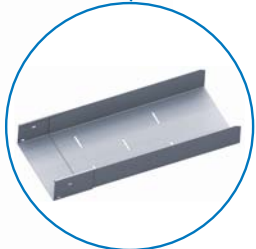


Floor duct bend with mitre cut

For the variety of conditions in every building project, a floor duct bend with mitre cut (BKBG) can be used to create a horizontal direction change.

Variable floor duct bend incl. separating strip

The new variable floor duct bend (BKVB) allows to change the horizontal direction in a constant angle range between 0° and 90°. In the same time, the included separating strip (BKRTV) is an adaptive addition.



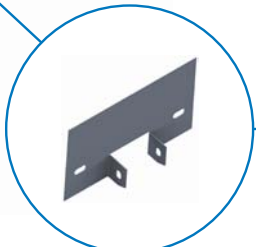
Floor duct telescope insert

A stepless balancing of length is ensured by the floor duct telescope insert (BKTE) connected with 1 m and 1.5 m floor duct short parts. That reduces the necessary cuttings enormously and guarantees the full assembly flexibility. Changes afterwards can be realized with little efforts.



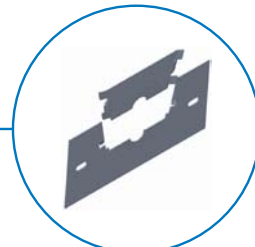
Variable floor duct attachment branch

With the new variable floor duct attachment branch (BKVAA) is a horizontal branch in a constant angle range between 0° and 30° possible for both sides.



Reducer to small ducts and cable protection hose

The PUK portfolio offers also an option to link consumer with small ducts (BKRKK) and cable protection hoses (BKRKS) very easily by using the reducer – without much assembly effort.





Errors and technical modification subject to change. Reproduction as well as electronic duplication only with our written permission. With appearance of this print all preceding documents lose their validity.

