



Crafted for Construction

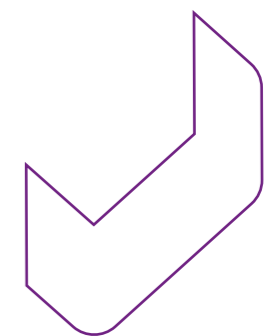
Editorial



The importance of something is most often recognised when it is lacking. The current shortage of skilled workers shows that we cannot do without craftsmanship and sound practical knowledge, neither in construction nor in other sectors. Industry-level craftsmanship is and will remain the basis of our economy. Industrialisation and digitalisation will not replace it but only enrich it.

We want to present an honest picture and give you a feeling for the PohlCon company: where we come from, what we stand for and what drives us. Tradition, concentrated engineering know-how, personal customer relationships and quality craftsmanship at industry level. In other words: crafted for construction.

We stand for this, and we measure ourselves by it. Here, on these pages, but above all, in our day-to-day business with you, our customers and business partners.



Tradition

A history of three brands

After the engineer Hermann Pohl had brought an improved cable clamp onto the market a few years earlier, he joined forces with Anton Klein in 1969. Together, the two established manufacturers formed the company PUK - a portmanteau of the two founders' surnames. In 1977 followed the takeover of Deutsche Kahneisen Gesellschaft (later JORDAHL), a specialist in reinforcement and fastening solutions founded 70 years earlier. The trio was completed in 2001 by H-BAU Technik, a construction supplier for concrete and prefabricated construction companies since 1977. Today's PohlCon GmbH thus has many years of development and production experience.

Three becomes one

At the beginning of 2022, JORDAHL, PUK, H-BAU Technik and Pohlcon Vertriebs GmbH in Germany were merged into a single company - the PohlCon GmbH. Since then, three strong brands have found themselves under one roof. They combine decades of expertise in the construction and finishing of buildings, the advantages of efficient structures, plus joint brand and development work. True to the motto: „Crafted for construction“ - from the foundation to the technical building equipment.



Vision

Responsibly innovative

Numerous patents and utility models prove the innovative strength of our employees. But ideas and visions never come from mere inspiration. Interaction with others is the fundamental prerequisite for anything new. Listen, think, do - that's how we have always done it, and that's how innovative and trend-setting products for responsible planning and building in the 21st century are still created at PohlCon today.

Solutions for the challenges of tomorrow

The coming years will require a rethink, especially from all those involved in construction. Lack of resources and climate change are only two of the many challenges urgently requiring new solutions. As a company, we see ourselves as having a duty here. Our research and development team has therefore taken on this task. Hundreds of smaller and larger developments are created at PohlCon every year - some optimisations of existing products, but also completely new developments - with which we make planning and building faster, simpler and more sustainable. For example, our Wireless Charging Protection System (WCPS), which enables flexible contactless charging of human-controlled or automated guided vehicles. Or our sustainable research project Tavimba, which lays the foundation for the widespread use of CO²-saving carbon concrete through the development of innovative connection solutions.

The WCPS combines our expert knowledge of underfloor systems and custom designs with the cutting-edge wireless charging technology of our project partner Wiferion. The system makes an essential contribution to „in-process charging“ and thus to the future of intralogistics.

Development

Art of engineering from the inventors of the anchor channel

In 1913 Anders Jordahl invented the anchor channel and brought it to market. Since then, countless further developments for the most diverse challenges have proven the foresight of his patent. At the same time, they represent only a minor part of the products that now bear our name. We are still characterised by an inventive spirit and work on current and future challenges with a large team of development and consulting engineers. In the meantime, PohlCon offers integrated solutions for numerous areas of application in structures and equipment - from underground garages to attics.

Big ideas for big projects

We develop all PohlCon solutions in such a way that they offer the highest degree of precision, reliability and processing safety. That is why they are regularly used in large projects and wherever safety and stability are paramount. When it comes specifically to curved tunnels, we offer straight and curved anchor channels from JORDAHL. They are used, for example, to fasten overhead lines. With the help of cable clamps or cable management systems from PUK, cables can be guided along the tunnel tube in a targeted manner. And the stainless steel reinforcements from H-BAU Technik are designed for areas in reinforced concrete construction with the highest demands on durability.





Creation

Craftsmanship

At five German factories, around 500 employees at PohlCon manufacture products from many different categories. Our work is less about the operation of machines and more about the expert manufacture of high-quality, often individual solutions for demanding tasks. That's why, in addition to engineers from various disciplines, master craftsmen from numerous trades are responsible for the production. Whether at PUK, JORDAHL or H-BAU Technik - expertise and experience, innovative spirit and an eye for detail form the backbone of production. That is the only way to create excellent craftsmanship.

Modern manufacturing

Sustainable production requires three things: In addition to experienced professionals, it needs dedicated support for the next generation of craftsmen and modern production facilities. That's why we offer vocational training to several young people every year and invest in infrastructure constantly. For example, we commissioned a new production hall at our plant in Klettgau in 2020 and a second one is currently under construction. At other locations, we installed new welding systems, automatic punching and bending machines, extruders and other special machines last year.

Product categories

- Sealing
- Fastening
- Reinforcement
- Facade fastening
- Cable management systems
- Cable clamps
- Sound insulation
- Formwork
- Underfloor systems
- Connection
- Thermal insulation
- Wireless Charging
- SystemPLUS

Created for construction: where experience and expertise meet modern manufacturing technology.

Customisation

Industrial production meets unique solutions

At PohlCon, the combination of development expertise and craftsmanship forms the basis for the planning and production of individually customised solutions tailored to the respective project and the wishes of our customers. From defining the specifications to determining the constructional factors up to production - in partnership cooperation between all those involved, this is how we create customised work on a grand scale.

Partner for demanding tasks

A construction project that will also set standards in the Main metropolis, the FOUR, is expected to be completed in Frankfurt by 2024. Amidst the skyline, four new high-rise buildings with approx. 213,000 square metres of gross floor area will be built on a multi-storey podium. In the innovative and sustainable quarter, designed by UNStudio in partnership with HPP Architekten, up to 1,000 people will live and about 4,000 employees will work. Almost from the beginning, there has been a lot of PohlCon expertise in the project. We supplied the JDA punching shear reinforcement by JORDAHL as a custom solution for the building project: the diameter of an anchor is 25 mm with a height of 5,105 mm. In addition, we delivered PENTAFLEX® ABS formwork elements by H-BAU Technik for sealing the diaphragm wall (floor-wall connection/horizontal interlocked joint), which were also designed as a custom solution, plus FERBOX® reverse bending connectors for the reinforcement.



Where the standard does not fit, we manufacture customised product solutions.

Installation

In-house mounting competence

When it comes to cable management and underfloor systems, with the PUK brand, we provide not only convincing solutions, but also a team of experienced specialists for the installation. After all, who should know the products better than the company that manufactures them? The site managers and fitters implement over 1,000 orders yearly, from small construction sites to large-scale projects. Whether office buildings, industrial plants or power stations, tunnels or airports: highly qualified and, of course, very familiar with the product range, we install quickly and professionally. That even includes projects in the chemical and mineral oil processing industries.

Managed from start to finish

The teams are organised regionally throughout Germany and can thus ensure fast response times and optimal service. PohlCon also provides permanent project managers for on-site consulting at large projects, if desired. Nothing stands in the way of a successful process - from requirements planning and the design of customised solutions to production and assembly, taking into account the upstream and downstream work on the construction site. In this way, we contribute to combating the shortage of skilled workers, which is now often causing construction progress to stall.

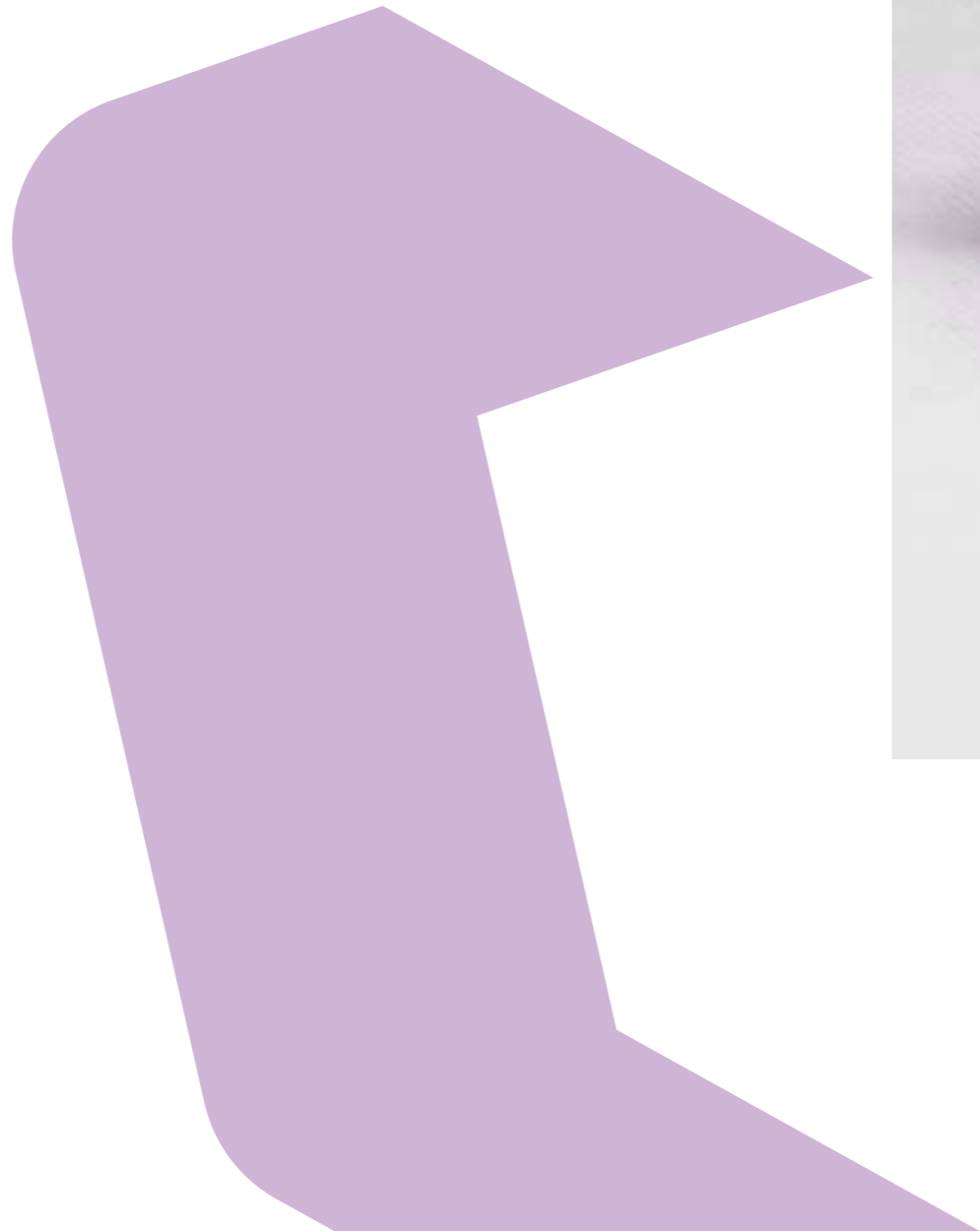


Consulting

Optimal support at all levels

We are proud of our consulting network with branch offices all over Germany. As the interface between the project managers and the factories, our consultants ensure that our „great craft“ can also work on the construction site - precisely and just in time. For the optimal support of every construction project, including the planning of tailor-made solutions, our customers receive support from our sales, field and office staff alongside our consulting engineers. They can provide support in all matters of technical planning and implementation.

In our decades as a high-performance construction partner, we have learnt the three elements that form the foundation of successful construction projects: passion for precise craftsmanship, forward-looking planning and a keen sense for the needs of our clients.



Contact



PohlCon GmbH
Headquarters
Nobelstraße 51
12057 Berlin

contact@pohlcon.com
www.pohlcon.com



12 locations in Germany

All rights reserved. This document may not be reprinted or electronically reproduced without our prior written permission. Content subject to technical change without notice. Errors and omissions excepted. The publisher shall assume no liability, irrespective of the legal grounds for this. This document supersedes all previous documentation.

© PohlCon | PC-LIT-BR-IMG-EN | 09-2022 | 1 | 09-2022 | WEST | 200



PohlCon GmbH
Nobelstraße 51
12057 Berlin

contact@pohlcon.com
www.pohlcon.com