

Price sheet for ISOPRO[®] 120

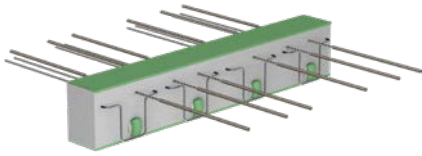
Valid from 1st May 2022



Table of contents

Thermal insulation	4	IP 120 Z ISO	14
IP 120 M	4	IP 120 A	15
IP 120 C	5	IP 120 F	15
IP 120 variants	6	IP 120 O	15
IP 120 Q	8	IP 120 S	16
IP 120 QZ	9	IP 120 W	16
IP 120 QS	10	Pallet overview IP 120	17
IP 120 QSZ	11		
IP 120 QQ	12	Service	18
IP 120 QQS	13	Our synergy concept for your benefit	18
IP 120 H	13		
IP 120 D	14		

IP 120 M



Exemplary illustration

Thermally insulated cantilever slab connection for freely projecting reinforced concrete components. Corrosion protection as a result of stainless steel rebar. 120 mm insulating material thickness for improved thermal and sound insulation. Fire protection version available.

When ordering, please specify the element height (h) and concrete covering (cv).

- Element length: 1000 mm
- With concrete covering cv 50: Minimum height 200 mm
- Compression level with compression/thrust bearings
- Insulating material: Neopor with $\lambda = 0.031 \text{ W/m}\cdot\text{K}$
- Two-part version available for installation in a prefabricated parts factory

Item number	Type	Height h [mm]	Weight [kg/m]	Price per m [€]
233100020922	M 10 Q4	180–250*	9.30	187.20
233100020938	M 20 Q4	180–250*	11.10	233.10
233100020954	M 30 Q4	180–250*	14.27	278.10
233100020962	M 40 Q4	180–250*	14.90	315.90
233100020970	M 50 Q4	180–250*	15.40	348.30
233100020978	M 60 Q4	180–250*	18.66	384.30
233100020986	M 70 Q4	180–250*	20.60	434.30
233100020994	M 80 Q4	180–250*	21.70	470.30
233100021002	M 90 Q4	180–250*	30.30	509.40
233100021010	M 100 Q4	180–250*	38.90	548.50
233100021018	M 110 Q4	180–250*	42.20	635.80
233100021034	M 120 Q4	180–250*	43.70	781.60

Prices apply to concrete covering cv 35 and 50 mm

* Heights <180 mm and >250 mm available on request

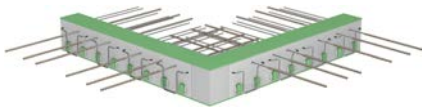
Surcharges	Height h [mm]	Construction	Surcharge per m [€]
Q6	180–250*	With shear force reinforcement	40.00
Q8	180–250*	With shear force reinforcement	50.00
Q4Q4	180–250*	With shear force reinforcement on both sides	70.00
Q8Q4	180–250*	With shear force reinforcement on both sides	80.00
Q6Q6	180–250*	With shear force reinforcement on both sides	80.00
REI 120 fire protection		Fireproof panels pre-assembled	0.00

* Heights <180 mm and >250 mm available on request

Priority elements

Item number	Type	Height h [mm]	Weight [kg/m]	Price per m [€]
233100020955	M 30 Q6	180/200/220	15.27	318.10
233100020987	M 70 Q6	180/200/220	21.60	474.30
233100021012	M 100 Q8	180/200/220	40.10	598.50

IP120 C



Exemplary illustration

Thermally insulated slab connection for joining freely projecting reinforced concrete components with outside corners. Corrosion protection as a result of stainless steel rebar. Fire protection version available.

When ordering, please specify the element height (h) and concrete covering (cv).

- The prices stated are for one corner element, consisting of one left-hand component (cv 35) as well as one right-hand component (cv 50 2nd layer) and a corner insulating body
- The left- and right-hand sub-components (cv 35/cv 50) can also be supplied individually
- With concrete covering cv 50: Minimum height 200 mm
- Compression level depending on the design in concrete compression bearings or steel pressure rods
- Insulating material: Neopor with $\lambda = 0.031 \text{ W/m}\cdot\text{K}$

Item number	Type	Element length [mm]		Height h [mm]	Weight [kg/pc.]	Price per pc. [€]
		1st layer	2nd layer			
233300021144	C 10 Q10	500	500*	180–250*	33.01	846.00
233300024374	C 10 Q12	500	500*	180–250*	37.50	886.00
233300021145	C 20 Q10	500	500*	180–250*	44.97	1071.00
233300024375	C 20 Q12	500	500*	180–250*	49.50	1111.00

Prices valid for concrete covering first layer cv 35 mm and one and second layer cv 50 mm

* l = 500 mm + 120 mm corner insulating body | Heights <180 mm and >250 mm available on request

Surcharges	Construction	Surcharge per m [€]
R 90 fire protection	Fireproof panels pre-assembled	0.00

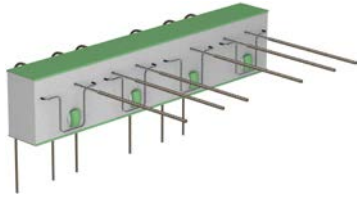
Item number	Type	Element length [mm]	Height h [mm]	Weight [kg/pc.]	Price per pc. [€]
233300021146	CE 10 Q10	500	180–250*	16.51	423.00
233300024378	CE 10 Q12	500	180–250*	18.75	443.00
233300021147	CE 20 Q10	500	180–250*	22.49	535.50
233300024379	CE 20 Q12	500	180–250*	24.75	555.50

Prices apply to concrete covering cv 35 and cv 50 mm

* Heights <180 mm and >250 mm available on request

Surcharges	Construction	Surcharge per m [€]
R 90 fire protection	Fireproof panels pre-assembled	0.00

IP 120 variants



Exemplary illustration

Thermally insulated cantilever slab connection for freely projecting reinforced concrete components with connection to reinforced concrete walls. The reinforcement rods are anchored downwards in the reinforced concrete wall for var. I and upwards for var. II. Fire protection version available.

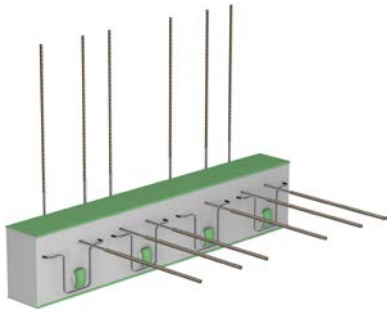
When ordering, please specify the element height (h) and concrete covering (cv).

- Element length: 1000 mm
- With concrete covering cv 50: Minimum height 200 mm
- Suitable for all wall thicknesses ≥ 220 mm
- Individual solutions for wall thicknesses < 220 mm available on request

Item number	Type	Height h [mm]	Weight [kg/m]	Price per m [€]
233100020922	M 10 Q4 WU	180–250*	9.30	343.80
233100020938	M 20 Q4 WU	180–250*	11.10	375.80
233100020954	M 30 Q4 WU	180–250*	14.27	503.60
233100020962	M 40 Q4 WU	180–250*	14.90	610.70

Prices apply to concrete covering cv 35 mm and cv 50 mm

* Heights < 180 mm and > 250 mm available on request



Exemplary illustration

- Element length: 1000 mm
- With concrete covering cv 50: Minimum height 200 mm
- Suitable for all wall thicknesses ≥ 220 mm
- Individual solutions for wall thicknesses < 220 mm available on request

Item number	Type	Height h [mm]	Weight [kg/m]	Price per m [€]
233100020922	M 10 Q4 WO	180–250*	10.07	343.80
233100020938	M 20 Q4 WO	180–250*	12.02	375.80
233100020954	M 30 Q4 WO	180–250*	15.45	503.60
233100020962	M 40 Q4 WO	180–250*	16.14	610.70

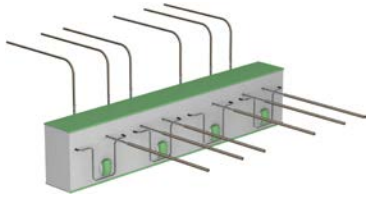
Prices apply to concrete covering cv 35 mm and cv 50 mm

* Heights < 180 mm and > 250 mm available on request

Surcharges	Height h [mm]	Construction	Surcharge per m [€]
Q6	180–250*	With shear force reinforcement	40.00
REI 120 fire protection		Fireproof panels pre-assembled	0.00

* Heights < 180 mm and > 250 mm available on request

IP120 variants



Exemplary illustration

Thermally insulated cantilever slab connection for freely projecting reinforced concrete components with connection to reinforced concrete ceilings with offset heights. The reinforced concrete ceiling is above the balcony slab to be connected for var. III HV and below this slab for var. III UV. Fire protection version available.

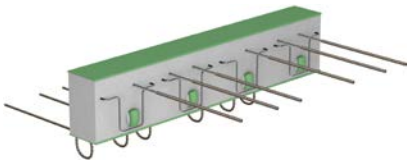
When ordering, please specify the element height (h) and concrete covering (cv).

- Element length: 1000 mm
- With concrete covering cv 50: Minimum height 200 mm
- Selection: Height offset HV100 (100 mm), HV150 (150 mm), HV200 (200 mm)
- Individual solutions for all height offsets and joist widths available on request

Item number	Type	Height h [mm]	Weight [kg/m]	Price per m [€]
233100020922	M 10 Q4 HV	180–250*	10.37	343.80
233100020938	M 20 Q4 HV	180–250*	12.38	375.80
233100020954	M 30 Q4 HV	180–250*	15.91	503.60
233100020962	M 40 Q4 HV	180–250*	16.62	610.70

Prices apply to concrete covering cv 35 mm and cv 50 mm

* Heights <180 mm and >250 mm available on request



Exemplary illustration

- Element length: 1000 mm
- With concrete covering cv 50: Minimum height 200 mm
- Selection: Height offset HV100 (100 mm), HV150 (150 mm), HV200 (200 mm)
- Individual solutions for all height offsets and joist widths available on request

Item number	Type	Height h [mm]	Weight [kg/m]	Price per m [€]
233100020922	M 10 Q4 UV	180–250*	10.62	343.80
233100020938	M 20 Q4 UV	180–250*	12.68	375.80
233100020954	M 30 Q4 UV	180–250*	16.29	503.60
233100020962	M 40 Q4 UV	180–250*	17.02	610.70

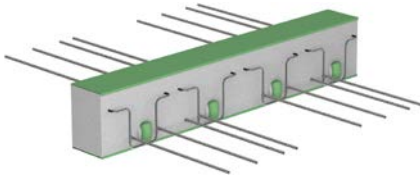
Prices apply to concrete covering cv 35 mm and cv 50 mm

* Heights <180 mm and >250 mm available on request

Surcharges	Height h [mm]	Construction	Surcharge per m [€]
Q6	180–250*	With shear force reinforcement	40.00
REI 120 fire protection		Fireproof panels pre-assembled	0.00

* Heights <180 mm and >250 mm available on request

IP 120 Q



Exemplary illustration

Thermally insulated slab connection for transmitting shearing forces in supported reinforced concrete components. Corrosion protection as a result of stainless steel rebar. 120 mm insulating material thickness for improved thermal and sound insulation. Fire protection version available.

When ordering, please specify the element height (h).

- Element length: 1000 mm
- Insulating material: Neopor with $\lambda = 0.031 \text{ W/m}\cdot\text{K}$

Item number	Type	Transverse rod on ceiling	Height h [mm]	Weight [kg/m]	Price per m [€]
233500021042	Q 10	Bent	180–250*	5.70	106.00
233500021043	Q 20	Bent	180–250*	5.90	117.00
233500021044	Q 30	Bent	180–250*	6.20	141.30
233500021045	Q 40	Bent	180–250*	6.40	159.30
233500021046	Q 50	Bent	180–250*	6.80	168.75
233500021047	Q 60	Straight	180–250*	7.50	178.20
233500021048	Q 70	Straight	180–250*	7.90	197.55
233500021049	Q 80	Straight	180–250*	8.90	216.90
233500021050	Q 90	Straight	180–250*	9.70	255.60
233500021051	Q 100	Straight	180–250*	11.60	306.90
233500021052	Q 110	Straight	180–250*	12.80	358.20
233500021053	Q 120	Straight	180–250*	14.20	479.70

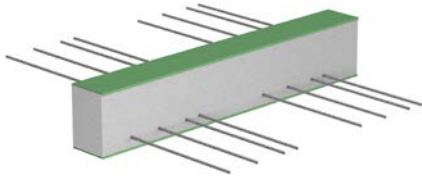
* Heights <180 mm and >250 mm available on request

Surcharges	Construction	Surcharge per m [€]
REI 120 fire protection	Fireproof panels pre-assembled	0.00

Priority elements

Item number	Type	Transverse rod on ceiling	Height h [mm]	Weight [kg/m]	Price per m [€]
233500021043	Q 20	Bent	180/200	5.90	117.00
233500021048	Q 70	Straight	180/200	7.90	197.55

IP 120 QZ



Exemplary illustration

Thermally insulated slab connection for transmitting shearing forces in supported reinforced concrete components. The connection is established without restraint. Corrosion protection as a result of stainless steel rebar. 120 mm insulating material thickness for improved thermal and sound insulation. Fire protection version available. **When ordering, please specify the element height (h).**

Type IP 120 QZ can only be used in conjunction with IP 120 Q.

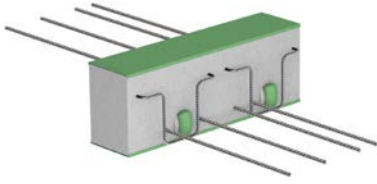
- Element length: 1000 mm
- Insulating material: Neopor with $\lambda = 0.031 \text{ W/m}\cdot\text{K}$

Item number	Type	Transverse rod on ceiling	Height h [mm]	Weight [kg/m]	Price per m [€]
233600021054	QZ 10	Bent	180–250*	1.70	101.00
233600021055	QZ 20	Bent	180–250*	1.90	112.00
233600021056	QZ 30	Bent	180–250*	2.20	136.30
233600021057	QZ 40	Bent	180–250*	2.40	154.30
233600021058	QZ 50	Bent	180–250*	2.80	163.75
233600021059	QZ 60	Straight	180–250*	3.50	173.20
233600021060	QZ 70	Straight	180–250*	3.90	192.55
233600021061	QZ 80	Straight	180–250*	4.90	211.90
233600021062	QZ 90	Straight	180–250*	5.70	250.60
233600021063	QZ 100	Straight	180–250*	7.60	301.90
233600021064	QZ 110	Straight	180–250*	8.80	353.20
233600021065	QZ 120	Straight	180–250*	9.20	474.70

* Heights <180 mm and >250 mm available on request

Surcharges	Construction	Surcharge per m [€]
REI 120 fire protection	Fireproof panels pre-assembled	0.00

IP 120 QS



Exemplary illustration

Thermally insulated slab connection for transmitting shearing forces in supported reinforced concrete components where forces are transmitted at certain points. Corrosion protection as a result of stainless steel rebar. 120 mm insulating material thickness for improved thermal and sound insulation. Fire protection version available.

When ordering, please specify the element height (h).

- Insulating material: Neopor with $\lambda = 0.031 \text{ W/m}\cdot\text{K}$

Item number	Type	Element length [mm]	Height h [mm]	Weight [kg/pc.]	Price per pc. [€]
233900021090	QS 10	300	180–250*	2.90	90.80
233900021091	QS 20	400	180–250*	4.80	137.60
233900021092	QS 30	500	180–250*	5.60	173.60
233900021093	QS 40	300	180–250*	3.90	100.80
233900021094	QS 50	400	180–250*	4.80	147.60
233900021095	QS 60	500	180–250*	6.10	183.60
233900021096	QS 70	300	180–250*	5.30	154.80
233900021097	QS 80	400	180–250*	8.50	162.00
233900021098	QS 90	500	180–250*	11.30	169.20
233900021762	QS 100**	300	200–250*	6.20	176.40
233900021763	QS 110**	400	200–250*	10.10	253.80
233900021764	QS 120**	500	200–250*	12.70	290.70

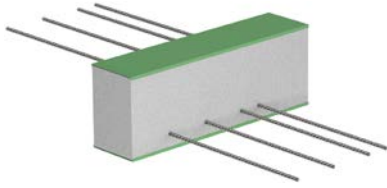
* Heights <180 mm and >250 mm available on request

Surcharges	Construction	Surcharge per m [€]
REI 120 fire protection	Fireproof panels pre-assembled around the circumference	0.00
**R 90 fire protection	Fireproof panels pre-assembled around the circumference	0.00

Priority elements

Item number	Type	Element length [mm]	Height h [mm]	Weight [kg/pc.]	Price per pc. [€]
233900021092	QS 30	500	180/200	5.60	173.60
233900021097	QS 80	500	180/200	8.50	162.00

IP 120 QSZ



Exemplary illustration

Thermally insulated slab connection for restraint-free connection of inset balconies and loggias. Corrosion protection as a result of stainless steel rebar. 120 mm insulating material thickness for improved thermal and sound insulation. Fire protection version available.

When ordering, please specify the element height (h).

Type IP 120 QSZ can only be used in conjunction with IP 120 QS.

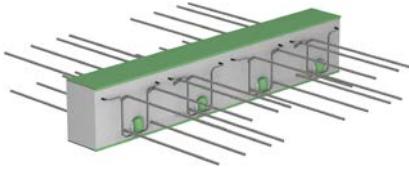
- Insulating material: Neopor with $\lambda = 0.031 \text{ W/m}\cdot\text{K}$

Item number	Type	Element length [mm]	Height h [mm]	Weight [kg/pc.]	Price per pc. [€]
234000021099	QSZ 10	300	180–250*	1.90	60.20
234000021100	QSZ 20	400	180–250*	2.80	93.50
234000021101	QSZ 30	500	180–250*	3.60	117.80
234000021102	QSZ 40	300	180–250*	2.90	70.20
234000021103	QSZ 50	400	180–250*	2.80	103.50
234000021104	QSZ 60	500	180–250*	4.50	127.80
234000021105	QSZ 70	300	180–250*	3.30	109.80
234000021106	QSZ 80	400	180–250*	5.80	114.30
234000021107	QSZ 90	500	180–250*	7.70	118.80
234000021765	QSZ 100	300	200–250*	4.20	123.30
234000021766	QSZ 110	400	200–250*	8.10	177.30
234000021767	QSZ 120	500	200–250*	10.70	204.30

* Heights <180 mm and >250 mm available on request

Surcharges	Construction	Surcharge per m [€]
REI 120 fire protection	Fireproof panels pre-assembled around the circumference	0.00

IP 120 QQ



Exemplary illustration

Thermally insulated slab connection for transmitting positive and negative shearing forces in supported reinforced concrete components. Corrosion protection as a result of stainless steel rebar. 120 mm insulating material thickness for improved thermal and sound insulation. Fire protection version available.

When ordering, please specify the element height (h).

- Element length: 1000 mm
- Insulating material: Neopor with $\lambda = 0.031 \text{ W/m}\cdot\text{K}$

Item number	Type	Transverse rod on ceiling	Height h [mm]	Weight [kg/m]	Price per m [€]
233700021066	QQ 10	Bent	180–250*	4.66	155.00
233700021067	QQ 20	Bent	180–250*	4.92	176.40
233700021068	QQ 30	Bent	180–250*	5.43	210.60
233700021069	QQ 40	Bent	180–250*	5.69	239.40
233700021070	QQ 50	Bent	180–250*	6.70	253.80
233700021071	QQ 60	Straight	180–250*	8.70	268.20
233700021072	QQ 70	Straight	180–250*	9.60	311.90
233700021073	QQ 80	Straight	180–250*	12.10	326.70
233700021074	QQ 90	Straight	180–250*	14.20	383.40
233700021075	QQ 100	Straight	180–250*	16.30	459.90
233700021076	QQ 110	Straight	180–250*	18.40	536.40
233700021077	QQ 120	Straight	180–250*	20.10	719.10

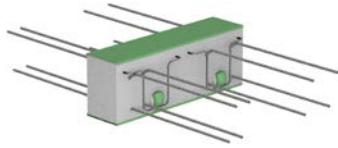
* Heights <180 mm and >250 mm available on request

Surcharges	Construction	Surcharge per m [€]
REI 120 fire protection	Fireproof panels pre-assembled	0.00

Priority elements

Item number	Type	Transverse rod on ceiling	Height h [mm]	Weight [kg/m]	Price per m [€]
233700021067	QQ 20	Bent	180/200	4.92	176.40
233700021072	QQ 70	Straight	180/200	9.60	311.90

IP 120 QQS



Exemplary illustration

Thermally insulated slab connection for transmitting positive and negative shearing forces in supported reinforced concrete components where forces are transmitted at certain points. Corrosion protection as a result of stainless steel rebar. 120 mm insulating material thickness for improved thermal and sound insulation.

Fire protection version available. **When ordering, please specify the element height (h).**

- Insulating material: Neopor with $\lambda = 0.031 \text{ W/m}\cdot\text{K}$

Item number	Type	Element length [mm]	Height h [mm]	Weight [kg/pc.]	Price per pc. [€]
234100021108	QQS 10	300	180–250*	3.20	120.50
234100021109	QQS 20	400	180–250*	4.20	182.60
234100021110	QQS 30	500	180–250*	6.40	227.60
234100021111	QQS 40	300	180–250*	4.30	130.50
234100021112	QQS 50	400	180–250*	7.90	192.60
234100021113	QQS 60	500	180–250*	8.30	237.60
234100021114	QQS 70	300	180–250*	12.40	200.70
234100021115	QQS 80	400	180–250*	11.80	210.60
234100021116	QQS 90	500	180–250*	15.70	220.50
234100021756	QQS 100**	300	200–250*	13.50	230.40
234100021757	QQS 110**	400	200–250*	15.90	330.30
234100021758	QQS 120**	500	200–250*	16.20	378.90

* Heights <180 mm and >250 mm available on request

Surcharges	Construction	Surcharge per m [€]
REI 120 fire protection	Fireproof panels pre-assembled around the circumference	0.00
**R 90 fire protection	Fireproof panels pre-assembled around the circumference	0.00

Priority elements

Item number	Type	Element length [mm]	Height h [mm]	Weight [kg/pc.]	Price per pc. [€]
234100021110	QQS 30	500	180/200	8.56	227.60
234100021115	QQS 80	500	180/200	14.06	210.60

IP 120 H



Exemplary illustration

Thermally insulated slab connection for transmitting horizontal forces parallel and/or vertical to the insulation plane. Use at specific points as an enhancement to the linear connectors e.g. type IP 120 M, IP 120 Q. Corrosion protection as a result of stainless steel rebar. 120 mm insulating material thickness for improved thermal and sound insulation.

Fire protection version available.

When ordering, please specify the element height (h). Circumferential REI 120 on request.

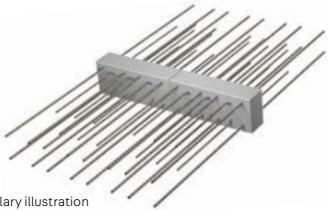
- Element length: 150 mm
- Insulating material: Neopor with $\lambda = 0.031 \text{ W/m}\cdot\text{K}$

Item number	Type	Height h [mm]	Weight [kg/pc.]	Price per pc. [€]
231300022146	H-X1	180–250*	0.69	33.30
231300022147	H-X2	180–250*	0.54	46.80
231300022148	H-X1Y1	180–250*	1.05	54.00
231300022149	H-X2Y2	180–250*	1.70	80.10

* Heights <180 mm and >250 mm available on request

Surcharges	Construction	Surcharge per m [€]
REI 120 fire protection	Fireproof panels pre-assembled	0.00

IP120 D



Exemplary illustration

Thermally insulated slab connection for continuous reinforced concrete ceilings. Corrosion protection as a result of stainless steel rebar. 120 mm insulating material thickness for improved thermal and sound insulation. Fire protection version available.

When ordering, please specify the element height (h) and concrete covering (cv).

- Element length: 500 + 500 mm
- With concrete covering cv 50: Minimum height 200 mm
- Insulating material: Neopor with $\lambda = 0.031 \text{ W/m}\cdot\text{K}$

Item number	Type	Height h [mm]	Weight [kg/m]	Price per m [€]
234500021126	D 20	180–250*	14.50	340.00
234500021129	D 30	180–250*	22.20	394.00
234500021132	D 50	180–250*	31.90	596.70
234500021135	D 70	180–250*	43.70	720.90
234500021138	D 90	180–250*	59.30	838.80
234500021141	D 100	180–250*	66.00	919.96

Prices apply to concrete covering cv 35 and 50 mm

* Heights <180 mm and >250 mm available on request

Surcharges	Height h [mm]	Construction	Surcharge per m [€]
Q8	180–250*	With shear force reinforcement	60.00
Q10	180–250*	With shear force reinforcement	120.00
R 90 fire protection		Fireproof panels pre-assembled	0.00

* Heights <180 mm and >250 mm available on request

IP120 Z ISO



Exemplary illustration

Intermediate insulation as an addition to the insulating joint in different installation situations

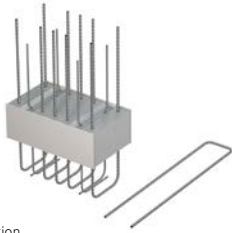
- Element length: 1000 mm
- Insulating material: Neopor with $\lambda = 0.031 \text{ W/m}\cdot\text{K}$
- Fixed length surcharge 12.80/pc
- FPI with fireproof panel

Item number	Type	Element length [mm]	Height h [mm]	Weight [kg/pc.]	Price per pc. [€]
235100021148	Z ISO	1000	180–250*	1.1	61.00
235100021149	Z ISO FP1	1000	180–250*	2.7	81.00

FPI = Fireproof panels 10 mm, (strip foams in case of fire)

* Heights <180 mm and >250 mm available on request

IP120 A



Exemplary illustration

Thermally insulated connection for joining parapet walls to the horizontal face of floor slabs. Corrosion protection as a result of stainless steel rebar. Fire protection version available. Selective use in accordance with the structural requirements.

When ordering, please specify the parapet wall thickness (a).

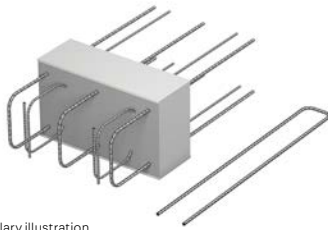
- Ceiling thickness: ≥ 160 mm
- Insulation thickness: 120 mm
- The thickness of the parapet wall is insulated
- Insulating material: Neopor with $\lambda = 0.031$ W/m·K

Item number	Type	Element length [mm]	Parapet wall thickness a [mm]	Weight [kg/pc.]	Price per pc. [€]
234600021166	A 1	350	180–250*	3.0	130.50
234600021167	A 2	350	180–250*	6.0	142.20

* Heights <180 mm and >250 mm available on request

Surcharges	Construction	Surcharge per m [€]
R 90 fire protection	Fireproof panels pre-assembled around the circumference	0.00

IP120 F



Exemplary illustration

Thermally insulated connection for joining balustrades to the end face of floor slabs. Corrosion protection as a result of stainless steel. Fire protection version available. Selective use in accordance with the structural requirements.

When ordering, please specify the element height (h) and balustrade width (b).

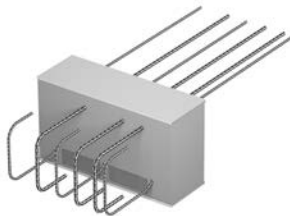
- Balustrade width: ≥ 150 mm
- Insulation thickness: 120 mm
- The height of the element is insulated
- Insulating material: Neopor with $\lambda = 0.031$ W/m·K

Item number	Type	Element length [mm]	Height h [mm]	Weight [kg/pc.]	Price per pc. [€]
234700021168	F	350	180–250*	5.70	142.20

* Heights <180 mm and >250 mm available on request

Surcharges	Construction	Surcharge per m [€]
R 90 fire protection	Fireproof panels pre-assembled around the circumference	0.00

IP120 O



Exemplary illustration

Thermally insulated connection for joining reinforced steel corbels to floor slabs. Corrosion protection as a result of stainless steel rebar. Fire protection version available. Selective use in accordance with the structural requirements.

When ordering, please specify the element height (h).

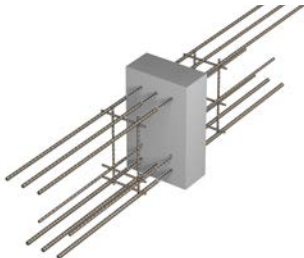
- Corbel width: ≥ 160 mm
- Insulation thickness: 120 mm
- The height of the element is insulated
- Insulating material: Neopor with $\lambda = 0.031$ W/m·K

Item number	Type	Element length [mm]	Height h [mm]	Weight [kg/pc.]	Price per pc. [€]
234800021169	O 1	350	180–250*	2.30	164.70
234800021170	O 2	350	180–250*	2.40	178.20

* Heights <180 mm and >250 mm available on request

Surcharges	Construction	Surcharge per m [€]
REI 120 fire protection	Fireproof panels pre-assembled around the circumference	0.00

IP120 S



Exemplary illustration

Thermally insulated connection for joining projecting reinforced steel beams to floor slabs. Corrosion protection as a result of stainless steel rebar. Fire protection version available.

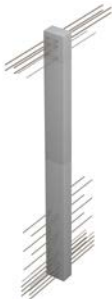
When ordering, please specify the height and width.

- Element length: 220–300 mm
- Standard height: 300–600 mm
- Beam width: 220–300 mm
- Insulation thickness: 120 mm
- Option VB1: Tension rod arrangement for a good connection
- Insulating material: Neopor with $\lambda = 0.031 \text{ W/m}\cdot\text{K}$

Item number	Type	Weight [kg/pc.]	Price per pc. [€]
234900021150	S 1 – VB 1	8.10	317.70
234900021153	S 2 – VB 1	12.70	370.80
234900021155	S 3 – VB 1	19.90	467.10
234900021157	S 4 – VB 1	28.30	618.30

Surcharges	Construction	Surcharge per m [€]
R 90 fire protection	Fireproof panels pre-assembled around the circumference	0.00

IP120 W



Exemplary illustration

Thermally insulated connection for joining shear walls to the walls on each storey. Corrosion protection as a result of stainless steel rebar. Fire protection version available.

When ordering, please specify the wall width and height.

- Wall width: 150–250 mm
- Wall height: 1500–3500 mm
- Insulation thickness: 120 mm
- Arrangement of the tension rods: Moderately strong connection

Item number	Type	Weight [kg/pc.]	Price per pc. [€]
235000021158	W 1	9.10	467.10
235000021159	W 2	14.40	585.90
235000021160	W 3	26.80	674.10
235000021161	W 4	41.10	773.10

Surcharges	Construction	Surcharge per m [€]
R 90 fire protection	Fireproof panels pre-assembled around the circumference	0.00

Pallet overview IP 120

Quantity [m/pal.]

ISOPRO® type	Type length [mm]	Element height h [mm]					
		160	180	200	220	240	250
M 10 – M 80	1000	22	18	18	16	14	14
M 10 – M 40, two-part	1000	20	20	20	20	20	20
M 50 – M 80 2, two-part	1000	20	20	20	20	20	20
M 90 – M 120	1000	16	16	16	14	12	12
M 90 – M 120 2, two-part	1000	16	16	16	16	16	16
Q 10 – 50	1000	40	36	36	32	32	28
Q 60 – 120	1000	20	18	18	16	16	14
QQ 10 – 50	1000	30	27	27	24	24	21
QQ 60 – 120	1000	20	18	18	16	14	14
QS, QSZ	300	40	36	36	32	28	28
QS, QSZ	400	36	36	32	32	28	28
QS, QSZ	500	28	28	28	24	24	24
D 20 – 100	500+500	8	7	6	5	5	4

Our synergy concept for your benefit

With us, you benefit from the collective experience of three established manufacturers, who combine products and expertise in a comprehensive range. That is the PohlCon synergy concept.



Full-service consulting

Our extensive network of consultants is available to answer all your questions about our products on site. From planning to use, you can enjoy personal support from our qualified employees.



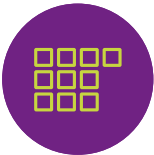
Digital solutions

Our digital solutions provide targeted support in planning with our products. From tender texts to CAD details and BIM data, right through to modern software solutions, we offer customized support for your planning process.



7 fields of application

We think in terms of holistic solutions. This is why we have combined our products into seven fields of application, where you can benefit from their synergy and the overall PohlCon product range.



10 product categories

In order to find the right product in our extensive range even faster, we have divided our products into ten product categories. This way you can navigate clearly and precisely between our products.



Individual solutions

Is there no series product on the market that is suitable for your project? We realize unique construction projects and deal with exceptional challenges using the many years of expertise of the three manufacturing brands.



All rights reserved. This document may not be reprinted or electronically reproduced without our prior written permission. Content subject to technical change without notice. Errors and omissions excepted. The publisher shall assume no liability, irrespective of the legal grounds for this. This document supersedes all previous documentation.

PohlCon GmbH

Nobelstr. 51
12057 Berlin
Germany

T +49 (0) 30 68283-04
F +49 (0) 30 68283-383

www.pohlcon.com