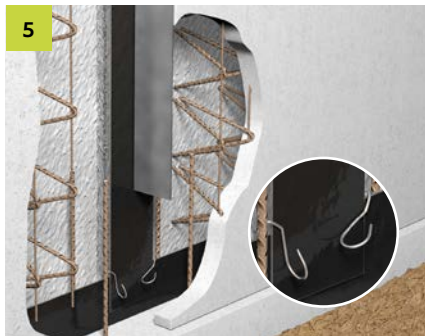
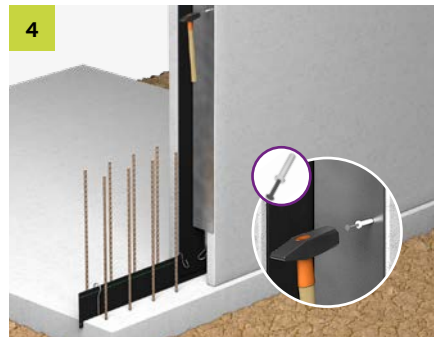
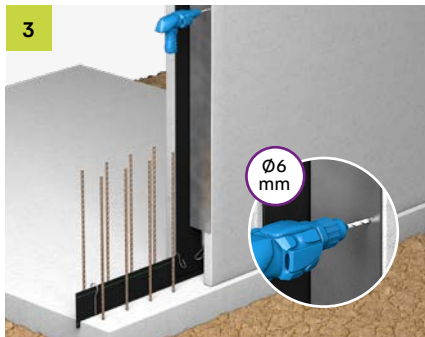
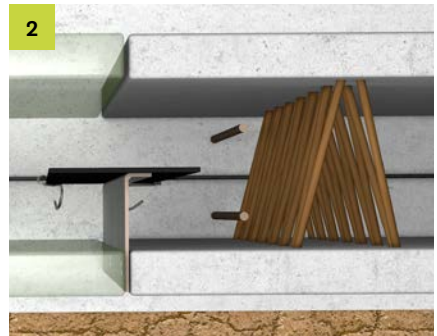


PENTAFLEX® FTS

Einbauanleitung/Installation instruction



**Beratung
Consulting**

T +49 7742 9215-300
technik-hbau@pohlcon.com

Irrtümer und technische Änderungen vorbehalten.
Errors and omissions excepted.

© PohlCon | PC-LIT-MA-PENTAFLEX-FTS-DE-EN
04-2019 | 2. v. | 07-2023