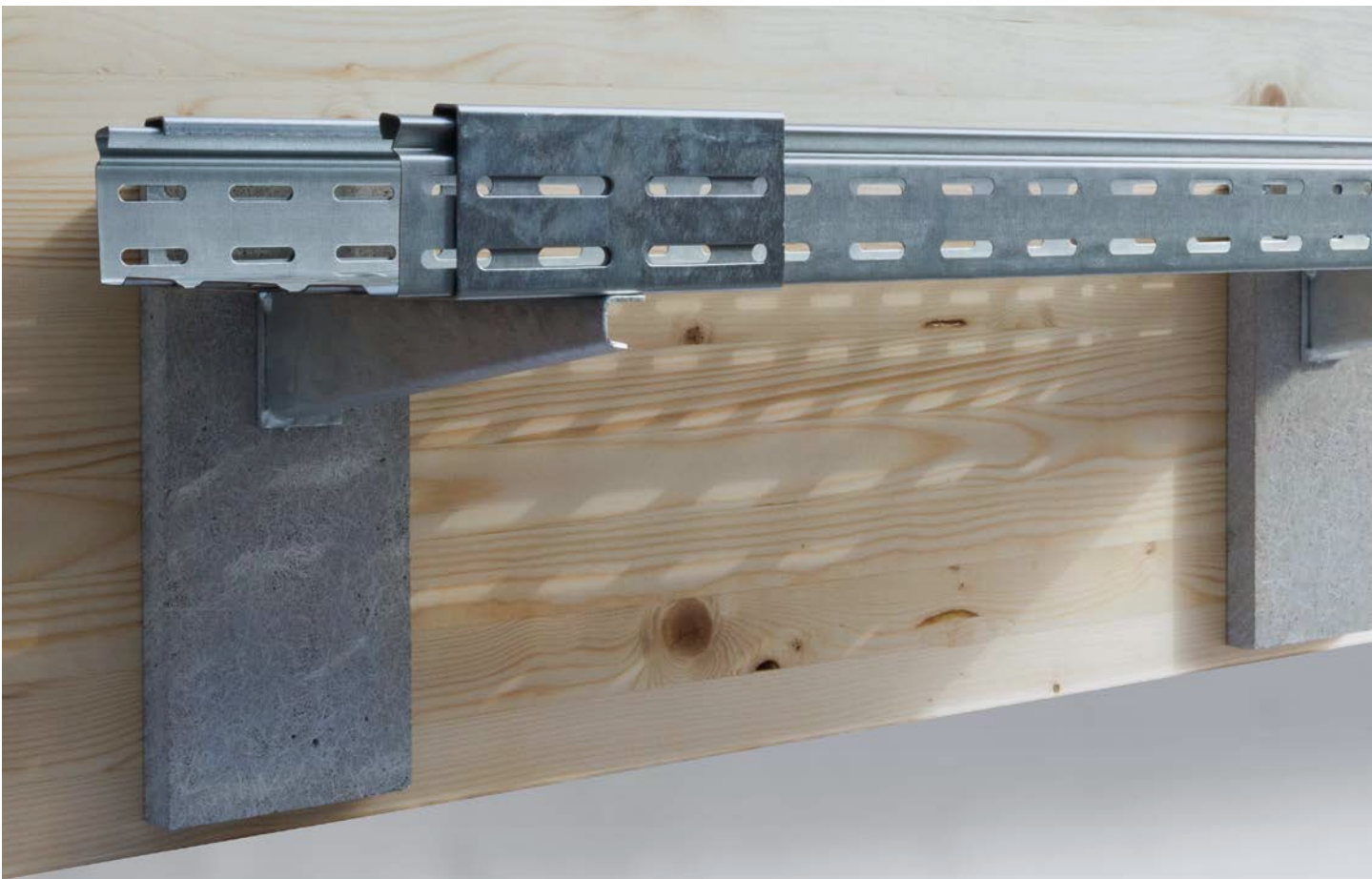


Maintenance of Function on Wood

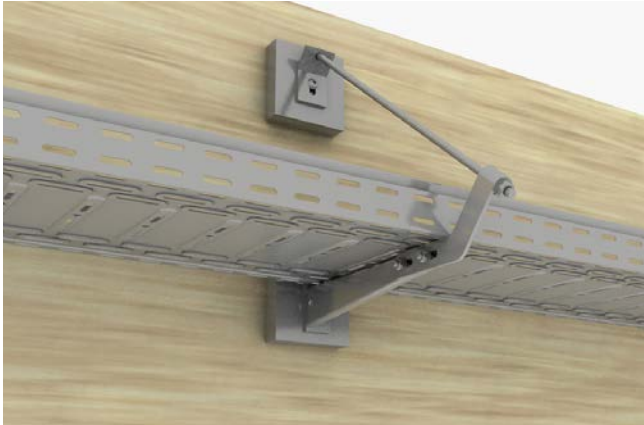
Technical information



With the subject: Fastening of cable tray systems on wood constructions according to the maintenance of function, PohlCon GmbH replenishes its field of cable tray applications with a new, exciting addition. The wood constructions own the fire protection classification F30 or F60 in regard to DIN 4102-2.

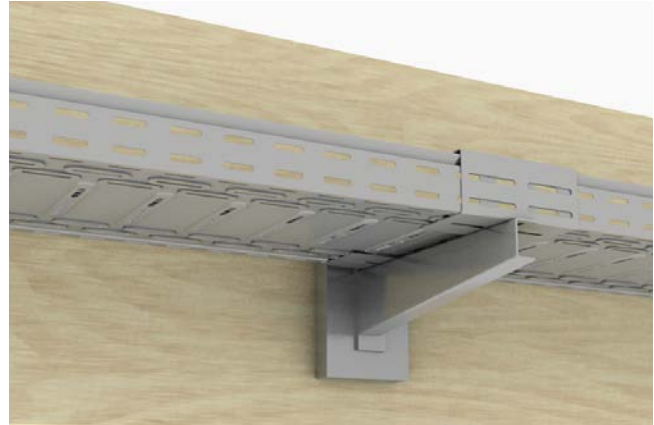
Detailed information and requirements are given through the expert's report no. GA-2017/06/8-Mey from August 21, 2017 (by IBB-GmbH Ingenieurbüro für Brandschutz von Bauarten). The necessary product for a correct assembling e.g. a ready-to-use fire protection plate or required wood screws are listed below.

Application examples



Assembly sideways onto the wood construction via suspension with a threaded rod GB

Fastening via a fiber cement plate (BSP), corner brace (W-BS), threaded rod (GB), bracket adapter (KAW-BS) and wall bracket (KW) to lay the cable tray (RGS 60) and the cable ladder (LGG-BS 60). Duct run in longitudinal direction and fastening sideways onto the wood construction.



Assembly sideways onto the wood construction only with a wall bracket KWMS

Fastening via fiber cement plate (BSP) and wall bracket (KWMS) to lay the cable tray (RG 60). Duct run in longitudinal direction and fastening sideways onto the wood construction.



Assembly under the wood construction with bracket support KDU

Suspension via a fiber cement plates (BSP), bracket support (KDU) and wall bracket (KWMS) to lay the cable tray (RG 60). Duct run in longitudinal direction and fastening under the wood construction.



Assembly sideways onto the wood construction via suspension with profile KHA

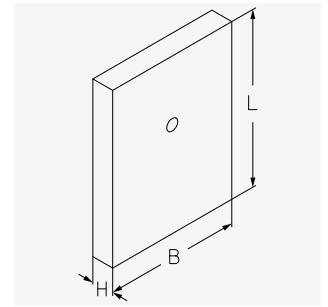
Suspension via fiber cement plate (BSP), corner strap (BL), threaded rods (GB) and KHA-Profil to lay the cable tray (RGS 60) and the cable ladder (LGG-BS 60). Duct run in longitudinal direction and fastening sideways onto the wood construction.

BSP 155

Fibre cement board, tailored, pre-drilled, maintenance of function

Article number	H mm	B mm	L mm	Ø mm	E	G kg
BSP 155x120x20FZ	20	120	155	11	30	0.252
BSP 155x120x30FZ	30	120	155	11	60	0.378

H: Height | W: Width | L: Length | Ø: Diameter | E: Function maintenance class | G: Weight

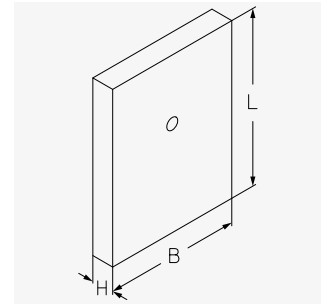


BSP 266

Fibre cement board, tailored, pre-drilled, maintenance of function

Article number	H mm	B mm	L mm	Ø mm	E	G kg
BSP 266x120x20FZ	20	120	266	11	30	0.446
BSP 266x120x30FZ	30	120	266	11	60	0.694

H: Height | W: Width | L: Length | Ø: Diameter | E: Function maintenance class | G: Weight

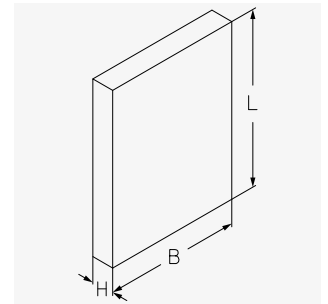


BSP 600

Fibre cement board, individual cut, not pre-drilled, maintenance of function

Article number	H mm	B mm	L mm	Ø mm	E	G kg
BSP 600x120x20FZ	20	120	600	11	30	1.008
BSP 600x120x30FZ	30	120	600	11	60	1.469

H: Height | W: Width | L: Length | Ø: Diameter | E: Function maintenance class | G: Weight

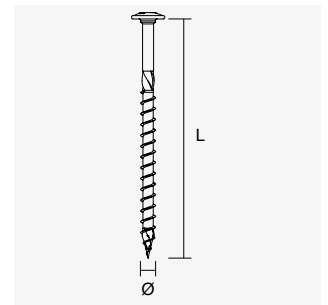


HT

Wood screw

Article number	L mm	Ø mm	G kg
Steel, galvanic zinc plated			
HT 6x60GV	60	6	0.009
HT 6x80GV	80	6	0.011
HT 6x100GV	100	6	0.013
HT 10x80GV	80	10	0.031
HT 10x100GV	100	10	0.037
HT 10x120GV	120	10	0.043
HT 10x140GV	140	10	0.049

L: Length | Ø: Diameter | G: Weight

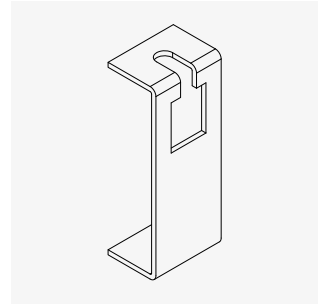


GBAH-BS

Threaded rod suspension, maintenance of function

Article number	L mm	G kg
Steel, hot-dip galvanised		
GBAH-BS 115F	115	0.170

L: Length | G: Weight

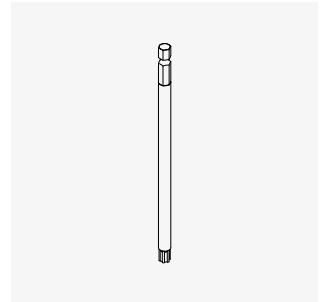


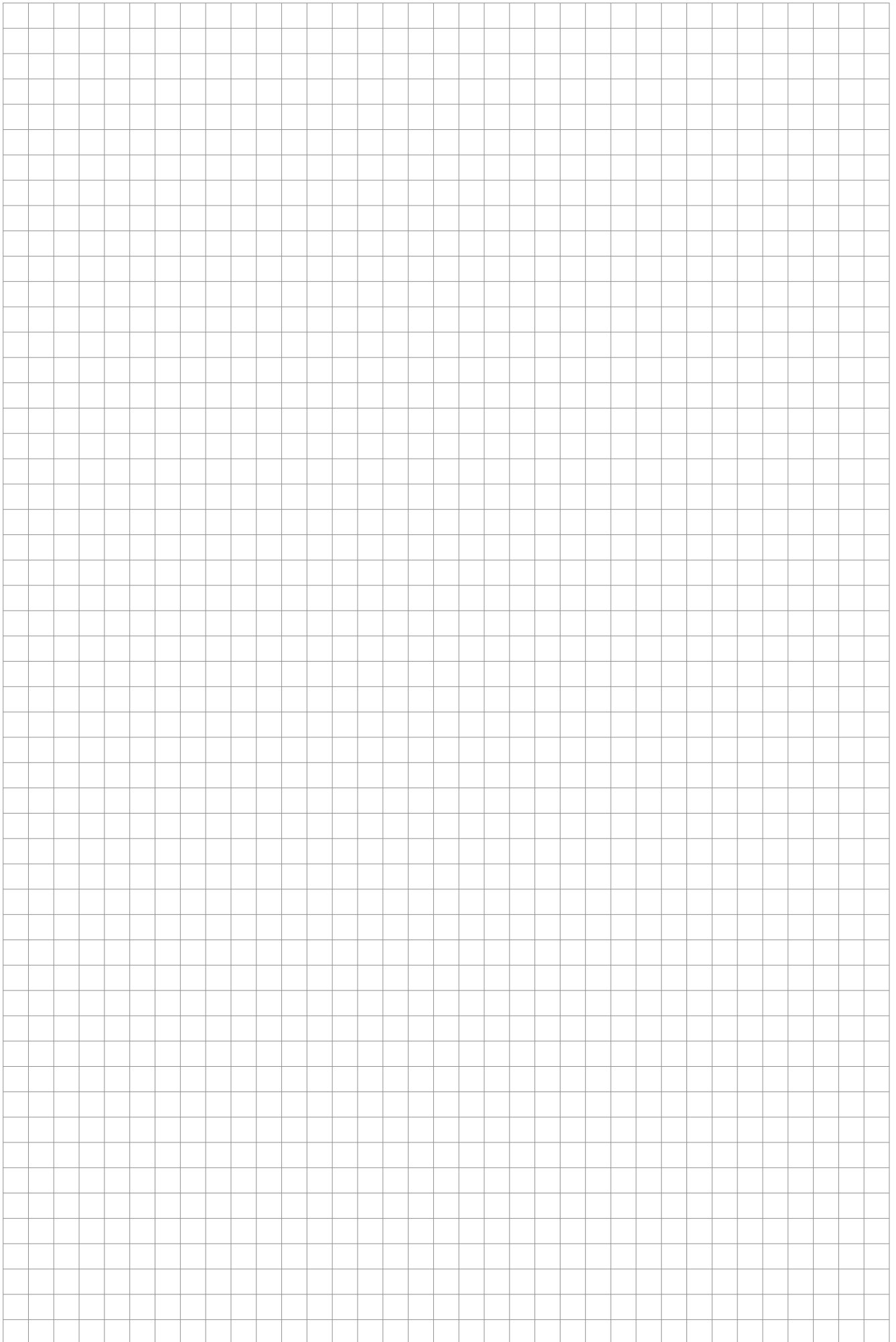
TB

Torx bit

Article number	D mm	G kg
TB 40X150	40	0.038

D: Diameter | G: Weight





All rights reserved. Reproduction and any form of electronic duplication are permitted only with our written authorisation. Subject to errors and technical changes. The publisher accepts no liability, on any legal grounds whatsoever. Upon publication of this document, all previous editions cease to be valid.

© PohlCon | PC-LIT-TI-FUH-EN | 07-2018 | 3. v. | 06-2026

PohlCon GmbH

Nobelstr. 51
12057 Berlin
Germany

T +49 30 68283-04
F +49 30 68283-383

www.pohlcon.com