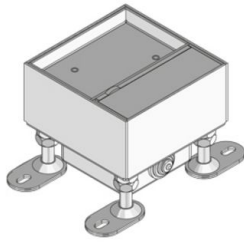


## UEKD1-1 V E

stainless steel hinged cover single-outlet cartridge, single, angular



Quadrangular single outlet made of stainless steel with hem to accommodate one 45x45 mm installation device. As a height-adjustable cartridge installation frame with cable outlet cartridge, self-locking opening lever, floor-flush cable outlet, supporting housing and rubber seal. For direct installation into screed- or hollow space floors. Suitable for rooms with dry and damp-cleaned floor covers. Designed for office traffic loads.

Please mind the technical information in chapter planning.



material	cartridge and frame: 2mm high-grade steel V2A, sub construction: sheet steel galvanized
type of assembly	Mounting on raw concrete ceiling
application area	dry floor cleaning
protection class	in use IP 20 / not in use IP 30
norm	according to DIN EN 50085
permits	according to VDE / TÜV
loading	including inspection stamp Ø 13 / 130 mm: 2 / 3 kN

### Stainless steel, according to ASTM 304 / BS 304 S 3

Product	H <sub>min</sub>	N	B	L	E	T	P <sub>max</sub>	IP <sub>n</sub>	IP <sub>g</sub>	G
UEKD1-1 15-V E	100 mm	20 mm	115 mm	115 mm	115 x 115 mm	12 mm	2 kN	IP 30	IP 20	1,7 kg
incl.:										
1x UGD1-1-V 2					rubber seal, square					

H<sub>min</sub>: Minimum installation height

N: levelling range

B: width

L: length

E: fitting dimension

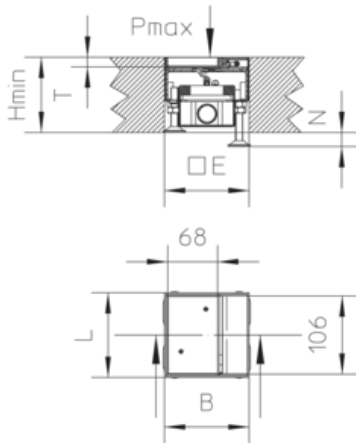
T: depth

P<sub>max</sub>: Maximum load



**IP<sub>n</sub>**: IP protection level in unused condition  
**IP<sub>g</sub>**: IP protection level in used condition  
**G**: weight

## DETAILS / APPLICATIONS



## OPTIONAL ACCESSORIES

UST45 1, UDAE22



dry-cleaned

