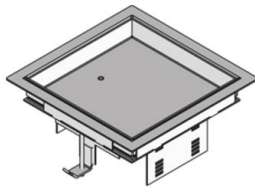


UEBDD1-2 V E

stainless steel dummy cover cartridge, single, angular



Quadrangular installation unit with stainless steel carpet protection frame. As a cartridge installation frame with dummy installation cartridge, rubber seal and universal mounting claw fastener set. To be used in floor boxes, mounting covers, raised or hollow floor openings. Suitable for rooms with dry or damp-cleaned floor covers. Suitable for office traffic loads.

Please mind the technical information in chapter planning.



material	cartridge and frame: 2 mm high-grade steel V2A
type of assembly	Assembly in floor box UBDHB, double or hollow floor openings
application area	dry floor cleaning
protection class	in use IP 20 / not in use IP 30
norm	according to DIN EN 50085
permits	according to VDE / TÜV
loading	including inspection stamp Ø 13 mm: 1.5 kN

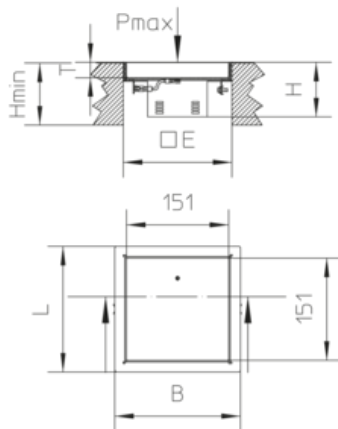
Stainless steel, according to ASTM 304 / BS 304 S 3

Product	H	H _{min}	B	L	E	T	P _{max}	IP _n	G
UEBDD1-2 15-V E	71 mm	80 mm	186 mm	186 mm	165 x 165 mm	12 mm	1,5 kN	IP 30	1,00 kg
incl.: 1x UGD1-2-V 2 2x UDBS 40-80 rubber seal, angular special claw									
UEBDD1-2 25-V E	81 mm	90 mm	186 mm	186 mm	165 x 165 mm	22 mm	1,5 kN	IP 30	1,20 kg
incl.: 1x UGD1-2-V 2 2x UDBS 40-80 rubber seal, angular special claw									



H: height
H_{min}: Minimum installation height
B: width
L: length
E: fitting dimension
T: depth
P_{max}: Maximum load
IP_n: IP protection level in unused condition
G: weight

DETAILS / APPLICATIONS



dry-cleaned

