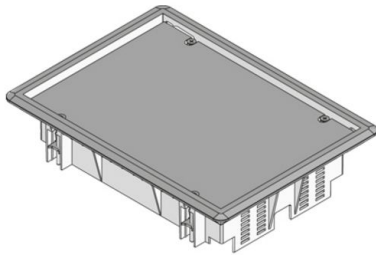


## UEBD2 V

dummy cover unit made of polyamide, double, angular



Quadrangular dummy unit made of polyamide with carpet protection frame. As an assembly frame with sheet steel inlay, including a universal set of fastening claws. For the installation into floor boxes, assembly covers and into raised or hollow floor openings. Suitable for rooms with dry-cleaned floor covers of up to 8mm. Designed for office traffic loads.

Please mind the technical information in chapter planning.



material	Cover and frame: PA6, surface matt finished, steel sheet inlay: 3 mm hot-dip galvanized steel plate
type of assembly	Assembly in floor box UBDHB, double or hollow floor openings
application area	dry floor cleaning
protection class	not in use IP 30
norm	according to DIN EN 50085
permits	according to VDE / TÜV
loading	including inspection stamp Ø 13 / 130 mm: 2 / 3 kN

### Polyamide

Product	H	H <sub>min</sub>	B	L	E	T	P <sub>max</sub>	color	IP <sub>n</sub>	G
UEBD2-V-G	65 mm	65 mm	206 mm	280 mm	261 x 186 mm	8 mm	2 kN	RAL 7011 (iron grey)	IP 30	1,3 kg
incl.:		1x UDBS-R 4 universal claw set for dummy cover, round								
UEBD2-V-S	65 mm	65 mm	206 mm	280 mm	261 x 186 mm	8 mm	2 kN	RAL 9011 (graphite black)	IP 30	1,3 kg
incl.:		1x UDBS-R 4 universal claw set for dummy cover, round								

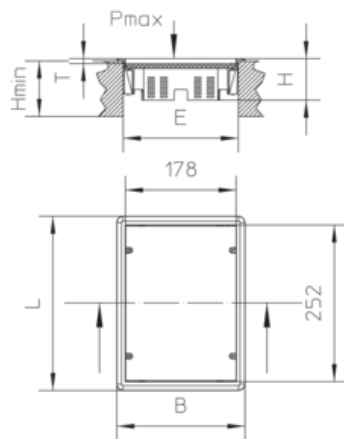
H: height

H<sub>min</sub>: Minimum installation height



**B:** width  
**L:** length  
**E:** fitting dimension  
**T:** depth  
**P<sub>max</sub>:** Maximum load  
**color:**  
**IP<sub>n</sub>:** IP protection level in unused condition  
**G:** weight

## DETAILS / APPLICATIONS



## OPTIONAL ACCESSORIES

UEBD V, UDBS 40-80, UDKSEB



dry-cleaned

