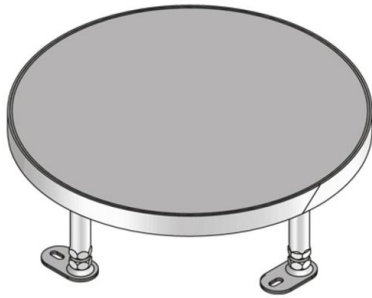


UEBD RP E

stainless steel dummy cover unit, triple, round, plane



Round cartridge made of flat stainless steel, surface blasted, with hem. As a levelling cartridge installation frame with dummy inlay cartridge and rubber seal for the installation into floor boxes, assembly covers and raised floor or hollow floor openings. Suitable for rooms with wet-cleaned floor covers. Designed for office traffic loads.

Please mind the technical information in chapter planning.



material	Cartridge and frame: stainless steel
type of assembly	To be mounted in floor box UBDHB respectively hollow floors.
application area	wet floor cleaning
protection class	not in use IP 54
norm	according to DIN EN 50085
permits	according to VDE / TÜV
loading	including inspection stamp Ø13 / 130 mm: 4 / 10 kN

Stainless steel, according to ASTM 304 / BS 304 S 3

Product	H	H _{min}	N	B	E	P _{max}	IP _n	G
UEBD 15-RP E	21 mm	100 mm	55 mm	305 mm	307 mm	4 kN	IP 54	3,20 kg
incl.:								
1x UGEAR-ELS				grounding angle bracket				
1x UGD-R 10-2				rubber seal, round				
1x UGDB15-R300 1.8				rubber seal, round				

H: height

H_{min}: Minimum installation height

N: levelling range

B: width

E: fitting dimension

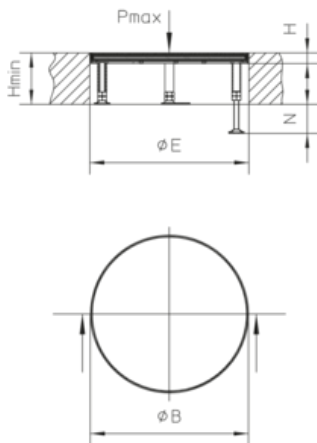
P_{max}: Maximum load

IP_n: IP protection level in unused condition

G: weight



DETAILS / APPLICATIONS



OPTIONAL ACCESSORIES

UBDSLFL, UGM SLF



wet-cleaned

