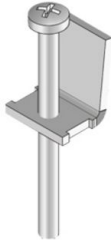


UDKSEB

claw, screed-flush



Continuously hot galvanized (Sendzimir process) (DIN EN 10346)

Product	k	G
UDKSEB	3 - 30 mm	0,01 kg

k: clamping range

:

G: weight

OPTIONAL ACCESSORIES

UEBSMD 122R, UEBSMD 185V, UEBSMD 260R, UEBSMD 260V, UEBSMD 307R

