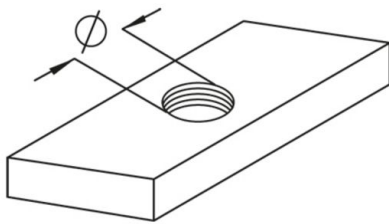


AMA18

channel nut, A 7/A 8/A 9



Hot-dip galvanized, according to BS 729 (DIN EN ISO 1461)

| Product | Ø | t | G |
|------------|-------|---------|------------|
| AMA18 M6F | 6 mm | 5,00 mm | 2,7 kg/100 |
| AMA18 M8F | 8 mm | 6,00 mm | 3 kg/100 |
| AMA18 M10F | 10 mm | 8,00 mm | 3,8 kg/100 |

Stainless steel, according to ASTM 304 / BS 304 S 3

| Product | Ø | t | G |
|------------|-------|---------|------------|
| AMA18 M6E | 6 mm | 6,00 mm | 2,7 kg/100 |
| AMA18 M8E | 8 mm | 6,00 mm | 3 kg/100 |
| AMA18 M10E | 10 mm | 8,00 mm | 3,8 kg/100 |

Ø: diameter
t: material thickness
G: weight

DETAILS / APPLICATIONS



