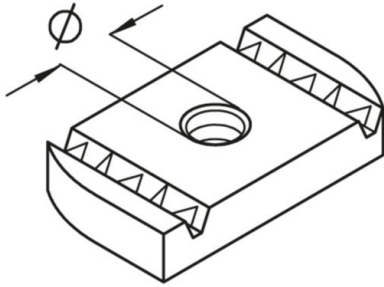


AM22

channel nut, A 41, KHA 41, KHAL 41



galvanized, according to DIN EN ISO 19598 / DIN EN ISO 2081

Product	Ø	t	G
AM22 M6	6 mm	6,00 mm	2,6 kg/100
AM22 M8	8 mm	6,00 mm	2,4 kg/100
AM22 M10	10 mm	8,00 mm	3,3 kg/100
AM22 M12	12 mm	9,50 mm	3,9 kg/100

Hot-dip galvanized, according to BS 729 (DIN EN ISO 1461)

Product	Ø	t	G
AM22 M6F	6 mm	6,00 mm	2,8 kg/100
AM22 M8F	8 mm	6,00 mm	2,6 kg/100
AM22 M10F	10 mm	8,00 mm	3,5 kg/100
AM22 M12F	12 mm	9,00 mm	3,9 kg/100

Stainless steel, according to ASTM 31 Ti / AISI 316 L, BS 320S17 / BS 316S11

Product	Ø	t	G
AM22 M6E4	6 mm	6,00 mm	2,6 kg/100
AM22 M8E4	8 mm	6,00 mm	2,4 kg/100
AM22 M10E4	10 mm	8,00 mm	3,5 kg/100

Page 1



Product	Ø	t	G
AM22 M12E4	12 mm	9,50 mm	4,0 kg/100

Ø: diameter
t: material thickness
G: weight

DETAILS / APPLICATIONS

