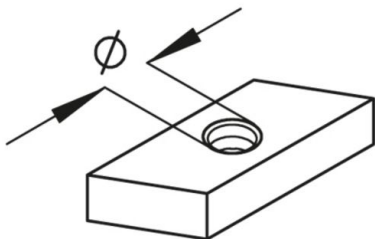


AM12

channel nut, B3/ B6



Hot-dip galvanized, according to BS 729 (DIN EN ISO 1461)

| Product | Ø | t | G |
|----------|------|---------|------------|
| AM12 M6F | 6 mm | 5,00 mm | 1 kg/100 |
| AM12 M8F | 8 mm | 5,00 mm | 0,9 kg/100 |

Stainless steel, according to ASTM 304 / BS 304 S 3

| Product | Ø | t | G |
|----------|------|---------|------------|
| AM12 M8E | 8 mm | 5,00 mm | 0,9 kg/100 |

Ø: diameter
t: material thickness
G: weight

DETAILS / APPLICATIONS



