

WLKLA

Wide-span cable ladder clamp attachment

The clamping fastener WLKLA is an accessory part for the WLHS wide-span side rail support if it is used to secure the position of a WL or WLR 200 wide-span tray on profile rails or brackets of type KWSS or KISS. We provide components in various materials and surface finishes to ensure that various corrosion protection requirements for different areas of application are met.

steel, continuously hot galvanized/Sendzimir process

Products	t	W
WLKLA S	3,00 mm	0,178 kg
incl.:		
1 x SES 6X20, 1 x AMF22 M6		

steel, batch/hot-dip galvanized

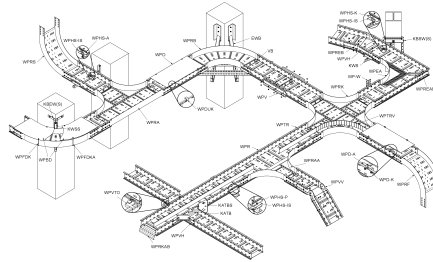
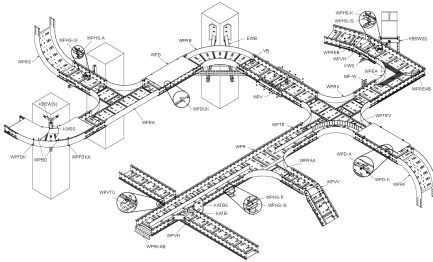
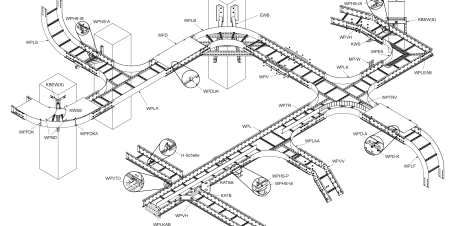
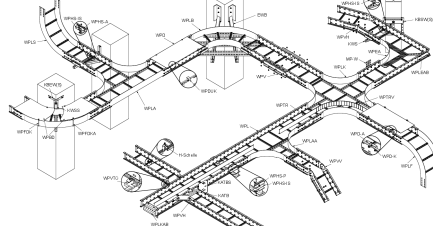
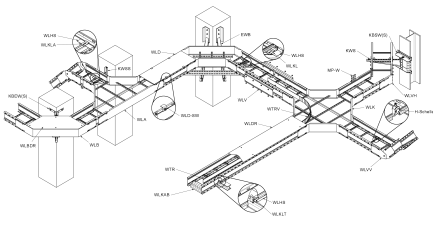
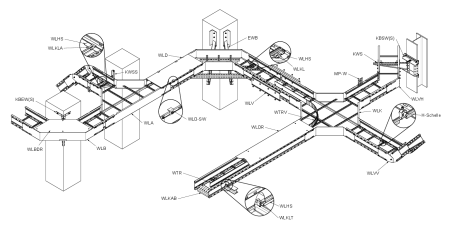
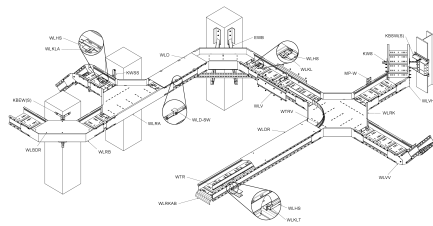
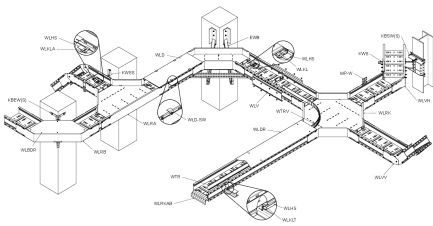
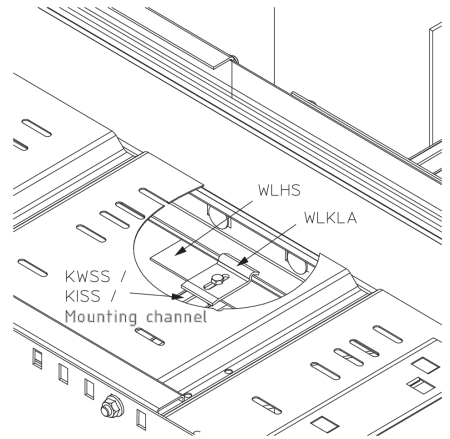
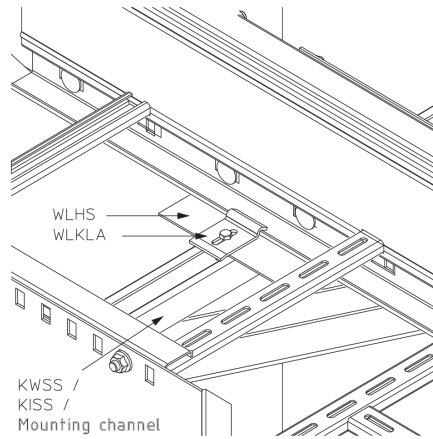
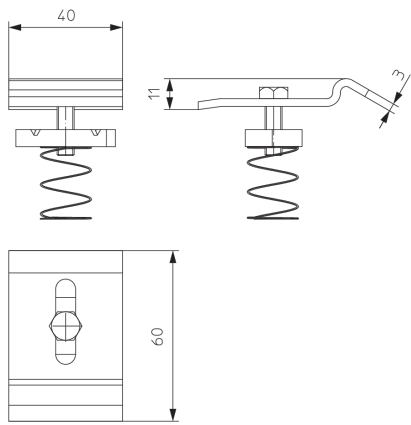
Products	t	W
WLKLA F	3,00 mm	0,180 kg
incl.:		
1 x AMF22 M6F, 1 x SES 6X20E		

t: material thickness
W: Weight per storage unit

DETAIL AND APPLICATION IMAGES



PRODUCT INFORMATION



OPTIONAL ACCESSORIES

WLHS





PohlCon GmbH
Nobelstraße 51 | 12057 Berlin
Telefon: +49 30 68283-04 | Fax: +49 30 68283-383 | contact@pohlcon.com

