

W

Cable clamps for wall fastening

The W cable clamps are used for routing cables with a diameter of up to 60 mm. The cable clamps are fixed directly to the substrate or to tensioning straps and are made of galvanised steel.

In conjunction with a grub screw that penetrates the coating, the cable clamp can be included in the equipotential bonding. The article is also available with lock nuts. This prevents the clamp from unintentionally coming loose. Grub screw and lock nuts must be specified separately when ordering.



steel, zinc plated

Products	M	W
16 W	2 Nm	0,041 kg
20 W	2 Nm	0,050 kg
24 W	2 Nm	0,054 kg
28 W	2 Nm	0,060 kg
32 W	4 Nm	0,072 kg
36 W	4 Nm	0,080 kg
44 W	4 Nm	0,114 kg
52 W	4 Nm	0,135 kg
60 W	4 Nm	0,162 kg

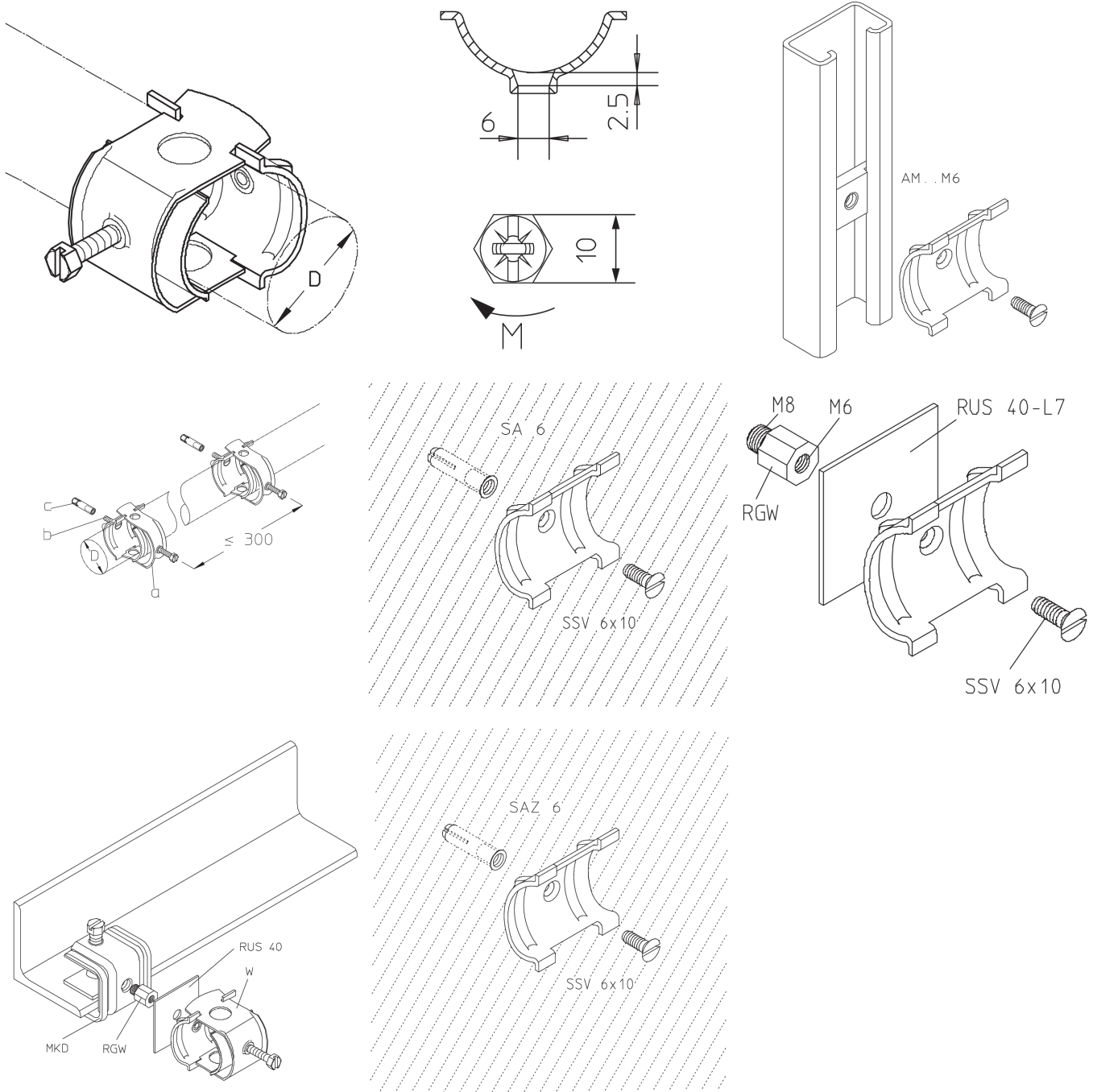
M: torque

W: Weight per storage unit

DETAIL AND APPLICATION IMAGES



PRODUCT INFORMATION



OPTIONAL ACCESSORIES

SA, SAZ, GP, SC, MKD, RGW



