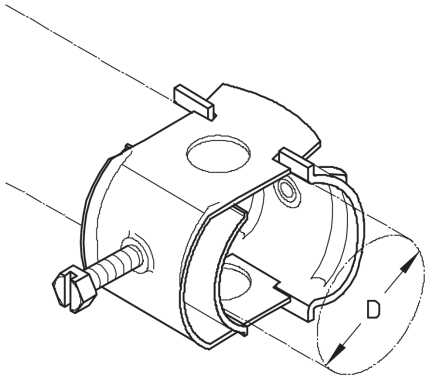


PRODUCT INFORMATION

W

Cable clamps for wall fastening, maintenance of function

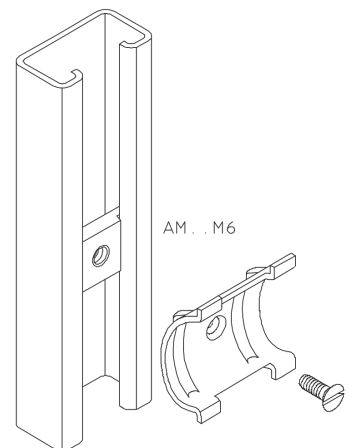
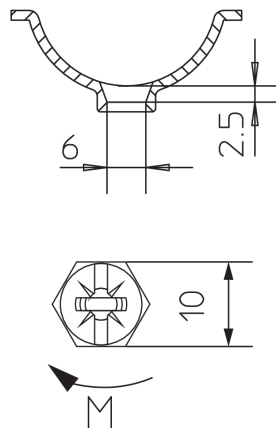
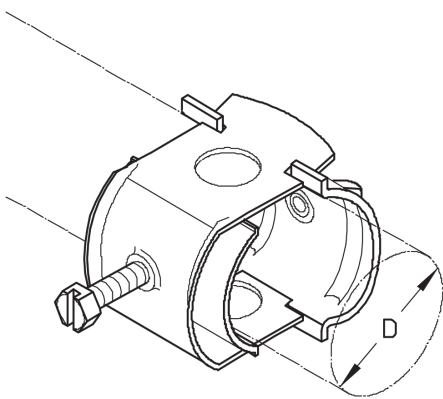


steel, zinc plated

Products	M	weight
16 W	2 Nm	0,041 kg
20 W	2 Nm	0,050 kg
24 W	2 Nm	0,054 kg
28 W	2 Nm	0,060 kg
32 W	4 Nm	0,072 kg

M: torque

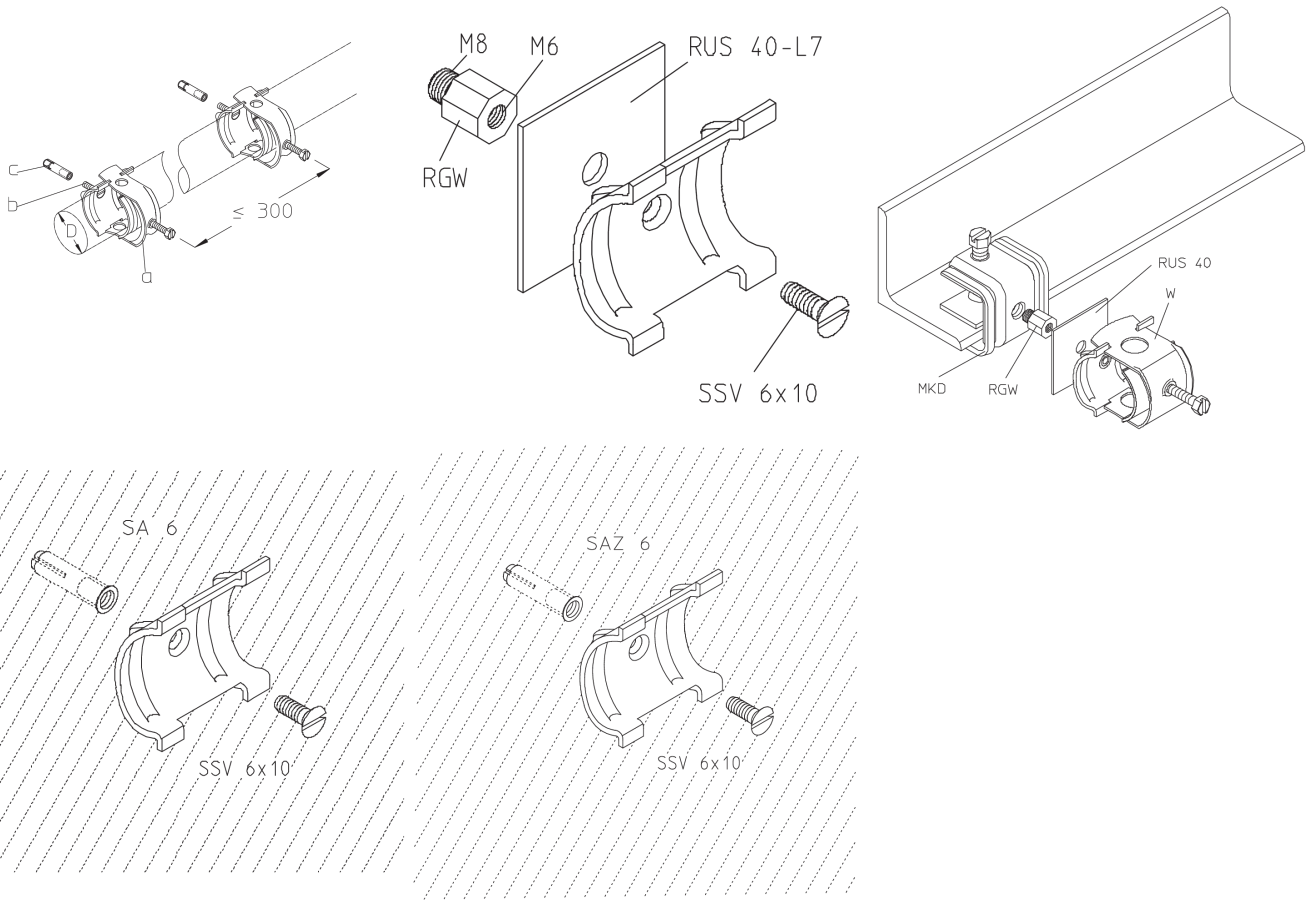
DETAIL AND APPLICATION IMAGES



Page 1



PRODUCT INFORMATION



OPTIONAL ACCESSORIES

LW

