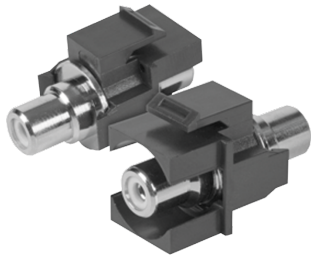


UKM-CINCH

Keystone mounting adapter, Cinch



UKM-CINCH components are Keystone installation adapters for equipping the underfloor systems. The adapters have a Cinch (RCA) connection and snap into data acquisition units with a 19.1x14.7 mm mounting hole. Colour-coded connectors indicate their exact use: yellow stands for video, red for the right stereo channel and white for the left stereo channel. The black housing is made of high-quality polycarbonate.

Products	color	weight
UKM-CINCHG-S	GELB	0,017 kg
UKM-CINCHW-S	WEISS	0,017 kg

DETAIL AND APPLICATION IMAGES

