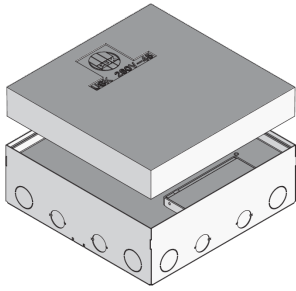


## UKE260 V

Stainless steel hinged cover compact single outlet, 12-way, angular



UKE260 V are hinged cover compact single outlets consisting of a floor socket, a height-adjustable single outlet and a formwork body. The square components are inserted directly into the screed and are used to accommodate up to twelve installation devices. In addition, M25 pipes can be routed through the perforated side walls of the floor socket. The outlets are made of stainless steel (V2A) and are suitable for use in dry-cleaned and damp-cleaned rooms with office traffic loads. They are available with installation dimensions of 264 x 264 mm.



Products	H <sub>min</sub>	N	E	P <sub>max</sub>	IP <sub>g</sub>	IP <sub>n</sub>	weight
UKE260 15-V E	90 mm	35 mm	264 x 264 mm	2,00 kN	IP-20	IP-30	3,830 kg
UKE260 25-V E	100 mm	35 mm	264 x 264 mm	2,00 kN	IP-20	IP-30	4,192 kg

**H<sub>min</sub>**: minimum installation height

**N**: levelling range

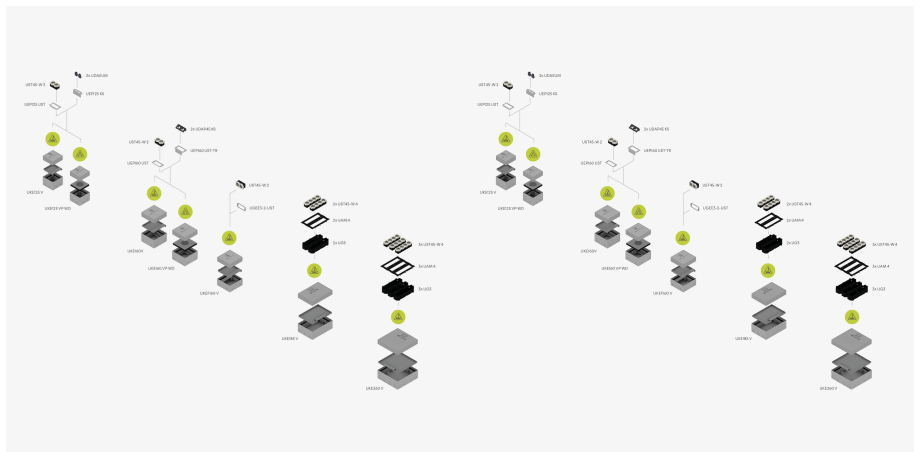
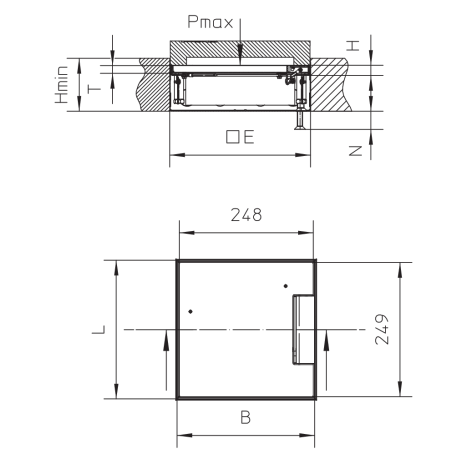
**E**: fitting dimension

**P<sub>max</sub>**: maximum load

**IP<sub>g</sub>**: IP protection level in used condition

**IP<sub>n</sub>**: IP protection level in unused condition

## DETAIL AND APPLICATION IMAGES



## OPTIONAL ACCESSORIES

UG3, UKENP 260



dry maintained



moistly maintained



Load requirements according to, DIN EN 50085

