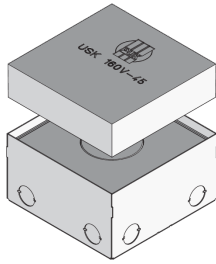


UKE160 VP WD

Stainless steel tube cover compact single outlet, 4-way, angular



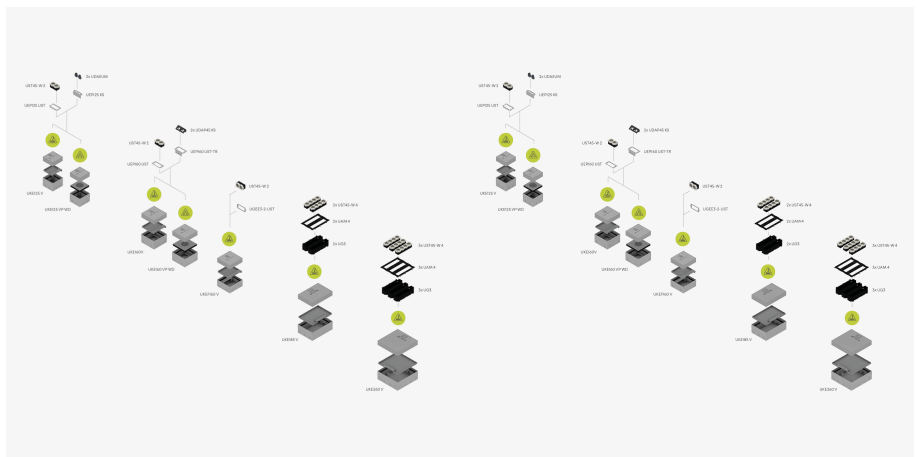
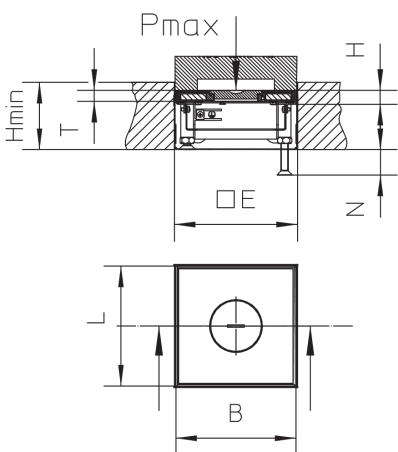
The UKE160 VP WD are tube cover compact single outlets consisting of a floor socket, a height-adjustable single outlet and a formwork body. The square components are inserted directly into the screed and are used to accommodate up to four installation devices. In addition, M25 pipes can be routed through the perforated side walls of the floor socket. The outlets are made of flat stainless steel (V2A) and are suitable for use in wet-cleaned rooms with high traffic loads. They are available with installation dimensions of 166 x 166 mm.



Products	H _{min}	N	E	P _{max}	IP _g	IP _n	weight
UKE160 15-VP-WD	90 mm	35 mm	166 x 166 mm	20,00 kN	IP-22	IP-54	3,912 kg

- H_{min}**: minimum installation height
- N**: levelling range
- E**: fitting dimension
- P_{max}**: maximum load
- IP_g**: IP protection level in used condition
- IP_n**: IP protection level in unused condition

DETAIL AND APPLICATION IMAGES



OPTIONAL ACCESSORIES

UEP160 UST, UEP160 UST-TR, UET WD, UKENP 160



wet maintained



Load requirements according to, DIN EN 50085

