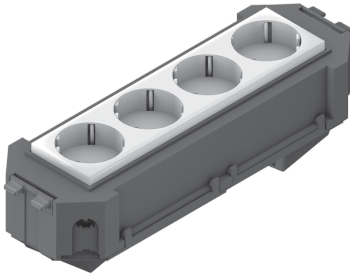


UG45WI-4

Mounting box, pre-assembled, Wieland



UG45WI-4 components are prefabricated mounting boxes. They are equipped with a Wieland 3-pole snap-in plug, a pre-wired socket (4 gangs) and all covers and mounting materials. The mounting boxes can be connected with 3-pole connection cables with plug and socket in the floor area. They are made of ABS copolymer.

Products	H	B	L		W
UG45WI-O4	40 mm	74 mm	225 mm	WEISS	0,311 kg
UG45WI-W4	40 mm	74 mm	225 mm	SCHWARZ	0,311 kg

H: height
B: width
L: length
W: Weight per storage unit

DETAIL AND APPLICATION IMAGES

