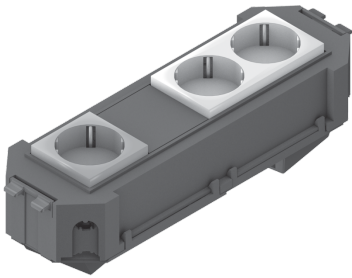


UG45WI-2-1

Mounting box, pre-assembled, Wieland



UG45WI-2-1 components are prefabricated mounting boxes. They are equipped with a Wieland 3-pole snap-in plug, a pre-wired socket (1 gang and 2 gangs) and all covers and mounting materials. The mounting boxes can be connected with 3-pole connection cables with plug and socket in the floor area. They are made of ABS copolymer.

Products	H	B	L		W
UG45WI-O2W1	40 mm	74 mm	225 mm	WEISS_SCHWARZ	0,303 kg
UG45WI-W2O1	40 mm	74 mm	225 mm	SCHWARZ_WEISS	0,303 kg

H: height
B: width
L: length
W: Weight per storage unit

DETAIL AND APPLICATION IMAGES

