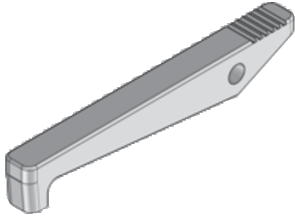


## UEKH3

### Opening lever



UEKH3 product solutions are opening levers. These components from the underfloor system range are used as spare parts for plastic installation units. The self-closing levers can be operated behind the cable outlet for quick, easy opening of the cover flaps on installation units. The levers are made of polyamide and are available in two different colour variants: as opening lever UEKH3-G in iron grey (RAL 7011) or the model UEKH3-S in graphite black (RAL 9011).

Products	color	W
UEKH3-G	RAL 7011 (iron gray)	0,003 kg
UEKH3-S	RAL 9011 (graphite black)	0,003 kg

**W:** Weight per storage unit

