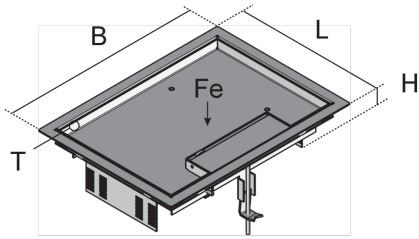


UEKDD2 V E

Stainless steel hinged cover cartridge, 2x, angular



UEKDD2 V E product solutions are square hinged cover cartridges for gradually lowering up to two mounting boxes by max. 30 mm. The installation units consist of a carpet protection frame with snap-in ladders, a hinged cover with floor-level cable outlet, rubber seal and universal claw set. They are suitable for floor sockets, assembly covers and raised or false floor openings in dry-cleaned or damp-cleaned rooms with office traffic loads. The cartridges are made of stainless steel V2A and have an IP protection class of IP 30 in an unused condition and an IP protection class of IP 20 when used. They are 284 mm wide with a minimum installation height of 90 or 100 mm, an installation dimension of 261 x 186 mm and a max. load of 1.5 kN.



Products	H	H _{min}	B	L	E	P _{max}	IP _g	IP _n	T	mounting box	W
UEKDD2 15- V E	71 mm	90 mm	284 mm	211 mm	261 x 186 mm	1,50 kN	IP-20	IP-30	12,5 mm	2	1,854 kg
incl.: 1 x UGD2-V 2, 2 x UDDBS 40-80											
UEKDD2 25- V E	82 mm	100 mm	210 mm	283 mm	261 x 186 mm	1,50 kN	IP-20	IP-30	22,5 mm	2	2,500 kg
incl.: 1 x UGD2-V 2, 2 x UDDBS 40-80											

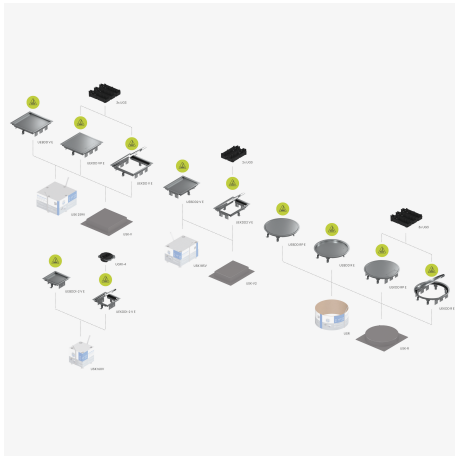
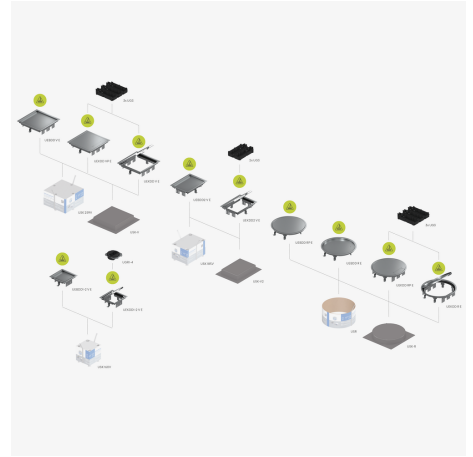
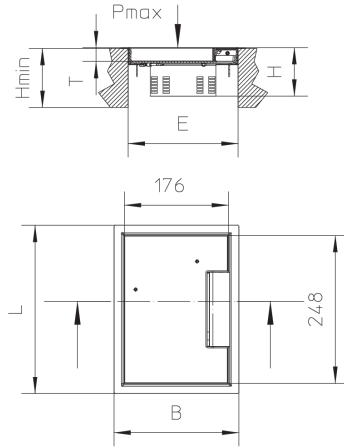
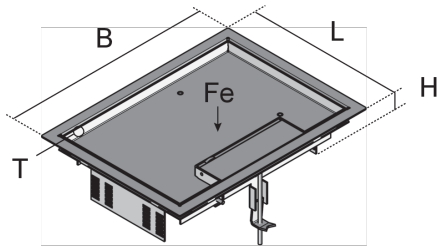
H: height
H_{min}: minimum installation height
B: width
L: length
E: fitting dimension
P_{max}: maximum load
IP_g: IP protection level in used condition
IP_n: IP protection level in unused condition
T: Depth of flooring recess
mounting box: maximum number of installable device casings



PRODUCT INFORMATION

W: Weight per storage unit

DETAIL AND APPLICATION IMAGES



OPTIONAL ACCESSORIES

UDBS 40-80



dry maintained



moistly maintained



DIN

Load requirements according to, DIN EN 50085

