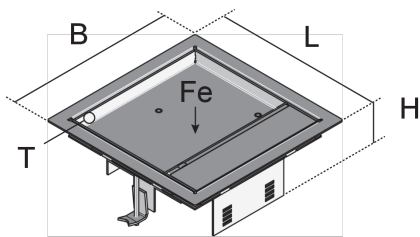


UEKDD1-2 V E

Stainless steel hinged cover cartridge, 1x, angular



UEKDD1-2 V E products are square hinged cover cartridges for gradually lowering one mounting box. The installation units consist of a carpet protection frame with snap-in ladders, a hinged cover with floor-level cable outlet, rubber seal, opening lever and universal claw set. They are suitable for floor sockets, assembly covers and raised or false floor openings in dry-cleaned or damp-cleaned rooms with office traffic loads. The cartridges are made of stainless steel V2A. They have an IP protection class of IP 30 in an unused condition and an IP protection class of IP 20 when used. They are 187 mm wide with a minimum installation height of 80 or 90 mm, an installation dimension of 165 x 165 mm and a max. load of 1.5 kN.



Products	H _{min}	B	L	E	P _{max}	IP _g	IP _n	T	mounting box	W
UEKDD1-2 15-V E	80 mm	187 mm	187 mm	165 x 165 mm	1,50 kN	IP-20	IP-30	12,5 mm	1	1,120 kg
incl.: 2 x UDBS 40-80										
UEKDD1-2 25-V E	90 mm	187 mm	187 mm	165 x 165 mm	1,50 kN	IP-20	IP-30	22,5 mm	1	1,290 kg
incl.: 2 x UDBS 40-80										

H_{min}: minimum installation height

B: width

L: length

E: fitting dimension

P_{max}: maximum load

IP_g: IP protection level in used condition

IP_n: IP protection level in unused condition

T: Depth of flooring recess

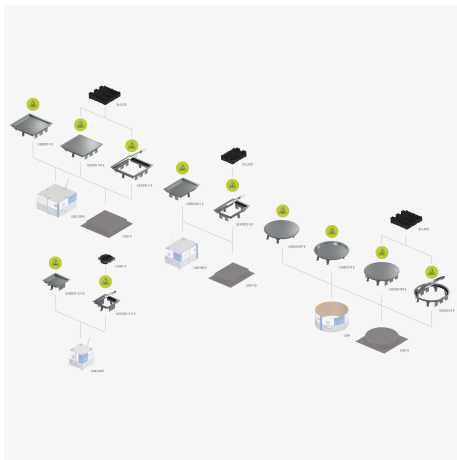
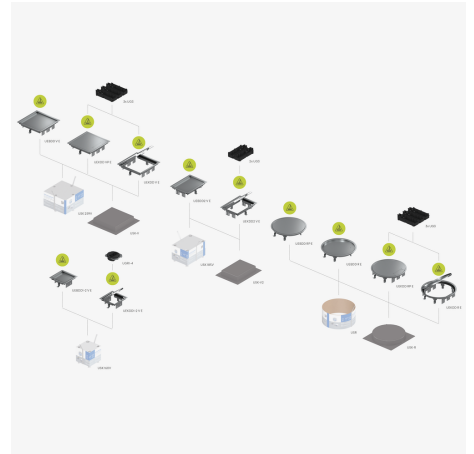
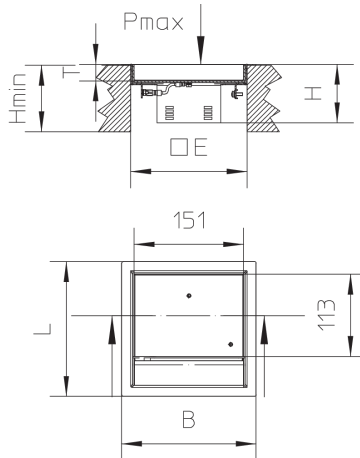
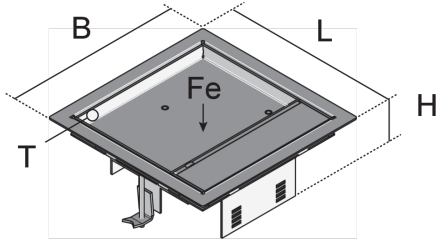
mounting box: maximum number of installable device casings

W: Weight per storage unit



PRODUCT INFORMATION

DETAIL AND APPLICATION IMAGES



OPTIONAL ACCESSORIES

UDBS 40-80



dry maintained



moistly maintained

DIN

Load requirements according to, DIN EN 50085

