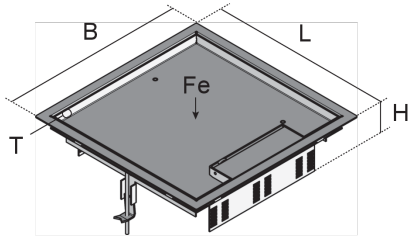


UEKDD V E

Stainless steel hinged cover cartridge, 3x, angular



UEKDD V E product solutions are square hinged cover cartridges for gradually lowering up to three mounting boxes by max. 30 mm. The installation units consist of a carpet protection frame with snap-in ladders, a hinged cover with floor-level cable outlet, rubber seal and universal claw set. They are suitable for floor sockets, assembly covers and raised or false floor openings in dry-cleaned or damp-cleaned rooms with office traffic loads. The cartridges are made of stainless steel V2A and have an IP protection class of IP 30 in an unused condition and an IP protection class of IP 20 when used. They have a max. load of 2 kN, measure 283 mm across, have installation dimensions of 261 x 261 mm and a minimum installation height of 90 or 100 mm.



Products	H	H _{min}	B	L	E	P _{max}	IP _g	IP _n	T	mounting box	W
UEKDD 15-V E	71 mm	90 mm	283 mm	283 mm	261 x 261 mm	2,00 kN	IP-20	IP-30	12,5 mm	3	2,378 kg
incl.: 2 x UDBS 40-80, 1 x UGD-V 2											
UEKDD 25-V E	81 mm	100 mm	283 mm	283 mm	261 x 261 mm	2,00 kN	IP-20	IP-30	22,5 mm	3	2,688 kg
incl.: 1 x UGD-V 2, 2 x UDBS 40-80											

H: height

H_{min}: minimum installation height

B: width

L: length

E: fitting dimension

P_{max}: maximum load

IP_g: IP protection level in used condition

IP_n: IP protection level in unused condition

T: Depth of flooring recess

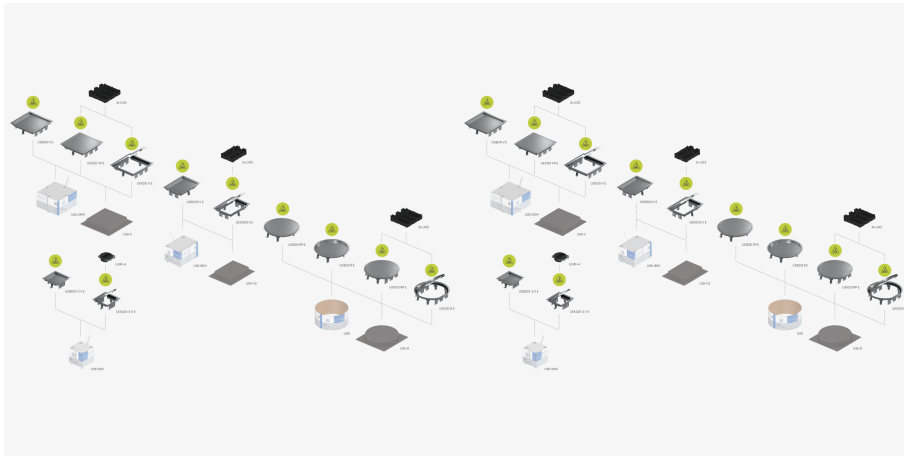
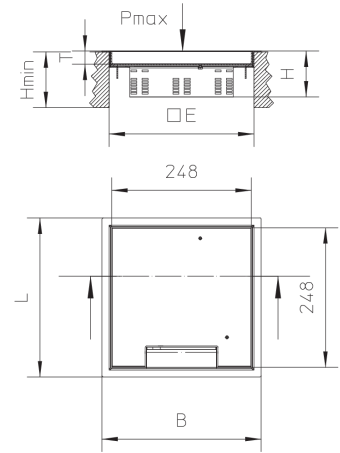
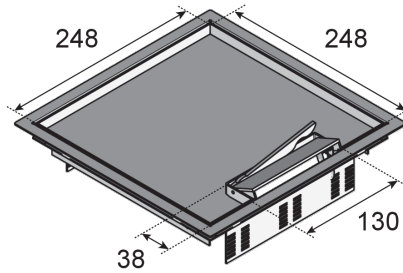
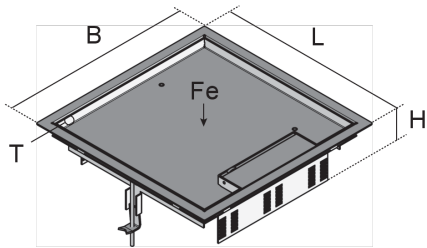
mounting box: maximum number of installable device casings



PRODUCT INFORMATION

W: Weight per storage unit

DETAIL AND APPLICATION IMAGES



OPTIONAL ACCESSORIES

UDBS 40-80, UEKDE V



dry maintained



moistly maintained



DIN

Load requirements according to, DIN EN 50085

