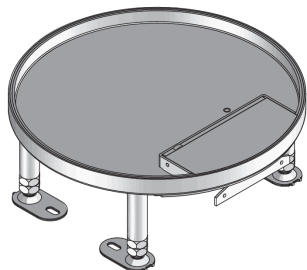


UEKD2 R E

Stainless steel hinged cover unit, 2x, round



UEKD2 R E components are round hinged cover units with abutting edges. They can accommodate a maximum of two mounting boxes. They consist of a height-adjustable cartridge mounting frame with a cable outlet cartridge, an opening lever and a rubber seal. The units are suitable for installation in UBDHB floor sockets, assembly covers and raised or false floor openings in wet-cleaned and damp-cleaned rooms with office traffic loads. Both the cartridge and frame are made of stainless steel V2A. They have an IP protection class of IP 30 in an unused condition, a maximum load capacity of 2 kN, an adjustment range of 55 mm, an installation dimension of 260 mm and a minimum installation height of 100 mm.



Stainless steel, according to ASTM 304 / BS 304 S 3

Products	H	H _{min}	N	E	P _{max}	IP _g	IP _n	T	mounting box	W
UEKD2 15-R E	18 mm	100 mm	55 mm	260 mm	2,00 kN	IP-20	IP-30	12,5 mm	2	2,165 kg
incl.: 1 × UGD2-R 10-2										
UEKD2 25-R E	28 mm	110 mm	55 mm	260 mm	2,00 kN	IP-20	IP-30	22,5 mm	2	2,425 kg
incl.: 1 × UGD2-R 10-2										

H: height

H_{min}: minimum installation height

N: levelling range

E: fitting dimension

P_{max}: maximum load

IP_g: IP protection level in used condition

IP_n: IP protection level in unused condition

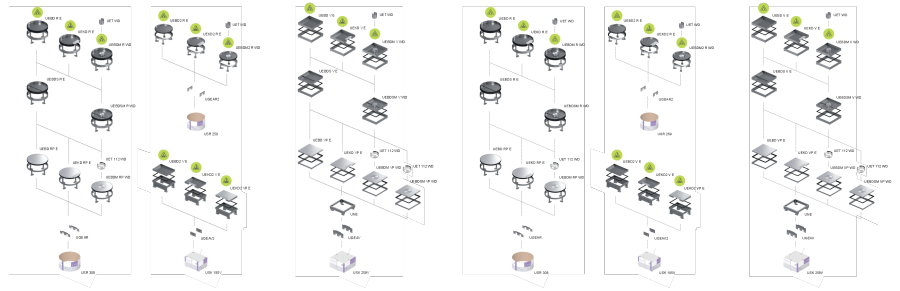
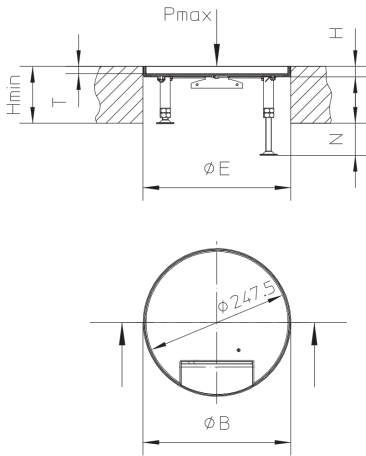
T: Depth of flooring recess

mounting box: maximum number of installable device casings

W: Weight per storage unit



DETAIL AND APPLICATION IMAGES



OPTIONAL ACCESSORIES

UGEAR2, UBDSLFL, UGM SLF



dry maintained



moistly maintained



Load requirements according to, DIN EN 50085

