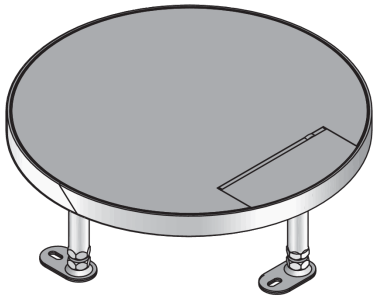


UEKD RP E

Stainless steel hinged cover unit, 3x, round, flat



UEKD RP E installation units are round dummy cover units with abutting edges. They can accommodate a maximum of three mounting boxes. They consist of height-adjustable cartridge mounting frames with a dummy insert cartridge and a rubber seal and are suitable for dry-cleaned and wet-cleaned rooms with office traffic loads. They are installed in UBDHB floor sockets, assembly covers and raised or false floor openings. The components are made of stainless steel V2A and have a flat, blasted surface with the slip resistance class R9. They have an IP protection class of IP 30 in an unused condition, a max. load capacity of 4 kN, a levelling range of 55 mm and installation dimensions of 307 mm.



Stainless steel, according to ASTM 304 / BS 304 S 3

Products	H	H _{min}	N	E	P _{max}	IP _g	IP _n	T	mounting box	W
UEKD 15-RP E	21 mm	100 mm	55 mm	307 mm	4,00 kN	IP-20	IP-30	0 mm	3	5,656 kg
incl.:										
1 x UGD-R 10-2										

H: height

H_{min}: minimum installation height

N: levelling range

E: fitting dimension

P_{max}: maximum load

IP_g: IP protection level in used condition

IP_n: IP protection level in unused condition

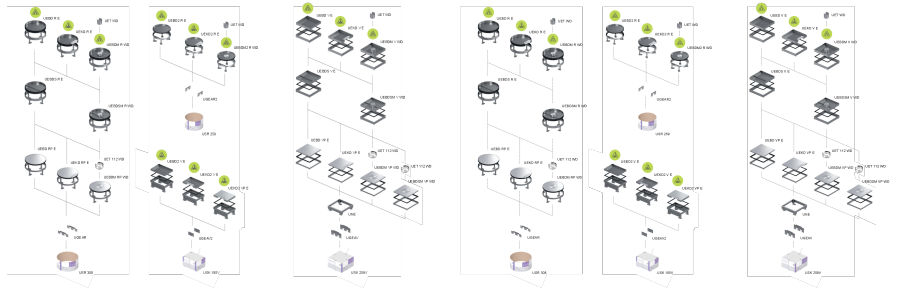
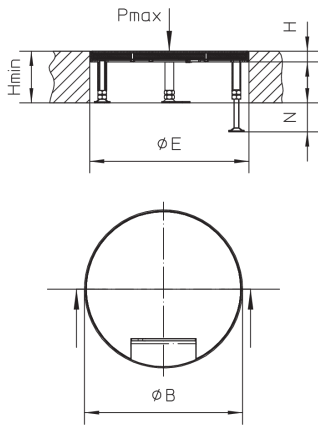
T: Depth of flooring recess

mounting box: maximum number of installable device casings

W: Weight per storage unit

DETAIL AND APPLICATION IMAGES





OPTIONAL ACCESSORIES

UGEAR, UBDSLFL, UGM SLF



dry maintained



moistly maintained



Load requirements according to, DIN EN 50085

