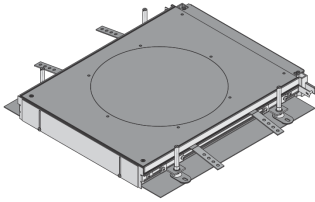


UEBSAM60 R

Add-on unit for screed-flush duct



UEBSAM60 R is an attachment accessory for screed-covered duct systems. The items are made of sendzimir hot-dip galvanised sheet steel in accordance with DIN EN 10346 and are designed for typical office traffic loads. The sets are delivered pre-assembled on aluminium side profiles with bolted cross-beams, blanked assembly openings, corner pieces and various additional components. UEBSAM60 R add-on units have mounting openings with round cut-outs and are 400 mm wide, 50 mm long and are made of material 3 mm thick. The minimum installation height is 60 mm and the levelling range is 50 mm.



Products	H _{min}	N	E	t	weight
UEBSAM60-307R 40S	60 mm	50 mm	307 mm	3,00 mm	9,013 kg
incl.:					
2 × UEBSVE S, 4 × UEBSST 80S, 2 × UEBSPT-3 AL, 1 × UEBSSES 60-40S, 4 × UEBSEA,					
1 × UEBSBMD-307R 40S, 2 × UEBSMSP 60, 2 × UEBSV-50					

H_{min}: minimum installation height

N: levelling range

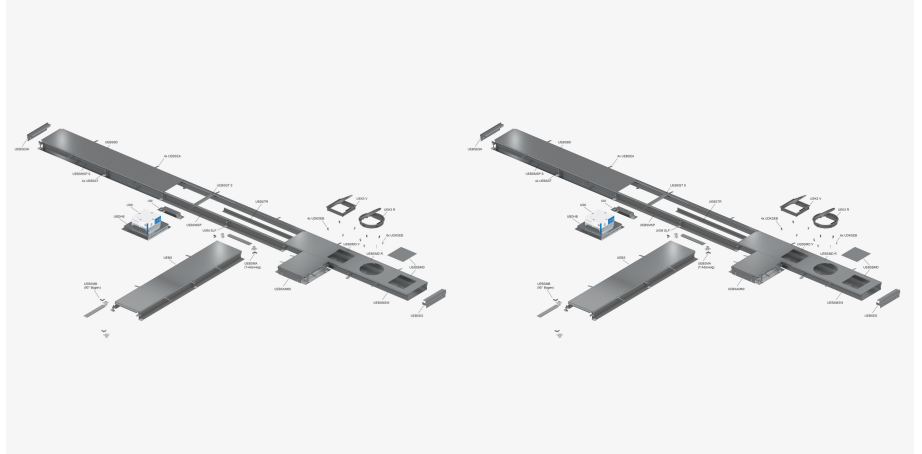
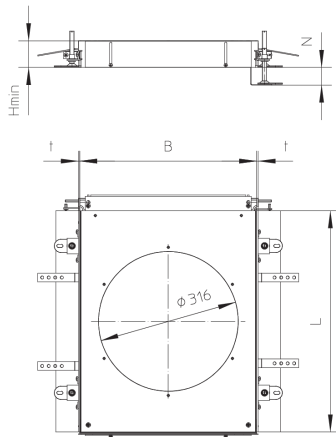
E: fitting dimension

t: material thickness

DETAIL AND APPLICATION IMAGES



PRODUCT INFORMATION



DIN

Load requirements according to, DIN EN 50085

