

UEBDSM R WD

Stainless steel heavy-duty tube cover unit, 3x, round

UEBDSM R WD are round heavy-duty tube cover units for holding three mounting boxes. They consist of a height-adjustable cartridge mounting frame with tube outlet cartridge, bolted assembly kit and rubber seal. They are suitable for wet-cleaned rooms with high traffic loads where they are installed in floor sockets, assembly covers and raised or false floor openings. The cartridge, frame and base plate are made of stainless steel, the heavy-duty insert of hot-dip galvanised sheet steel and the tube mounting kit of anodised aluminium. They have an IP protection rating of IP 54 in an unused condition, a max. load capacity of 20 kN, a levelling range of 55 mm and installation dimensions of 307 mm.



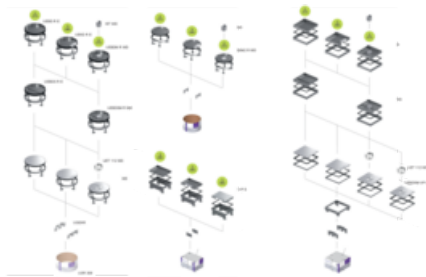
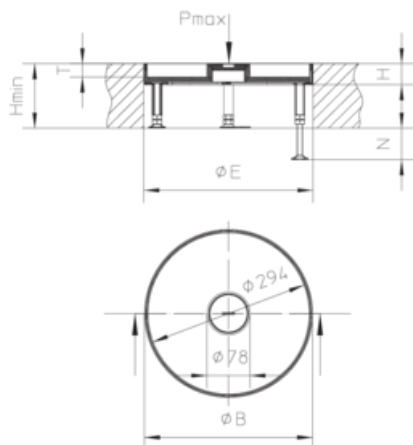
Stainless steel, according to ASTM 304 / BS 304 S 3

Article	Type	H	H _{min}	N	P _{max}	ØB	mounting box	ØE	IP _g	IP _n	T	G
UEBDSM 35-R6-WD	heavy duty cartridge unit,	38 mm	117 mm	55 mm	20.00 kN	305 mm	3	307 mm	IP 22	IP 54	24 mm	7.087 kg

- H:** height
H_{min}: minimum installation height
N: levelling range
P_{max}: maximum load
ØB: Installation diameter
mounting box: maximum number of installable device casings
ØE: fitting dimension
IP_g: IP protection level in used condition
IP_n: IP protection level in unused condition
T: Depth of flooring recess
G: Weight per storage unit

DETAIL AND APPLICATION IMAGES





OPTIONAL ACCESSORIES

UGEAR, UET WD, UBDSL, UGM SLF

DIN

Load requirements according to: DIN EN 50085

