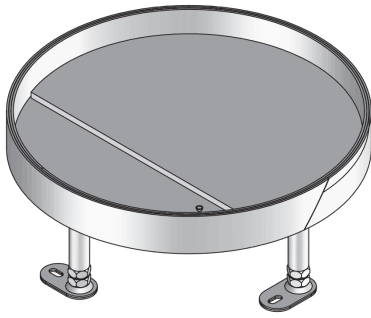


## UEBDS R E

Stainless steel heavy-duty dummy cover unit, 3x, round



UEBDS R E installation units are round dummy cover units with abutting edges. They can accommodate a maximum of three mounting boxes. They consist of height-adjustable mounting frames with a dummy heavy-duty cartridge, a rubber seal and the UGEAR-ELS earthing bracket. The components are suitable for use in wet-cleaned rooms with high traffic loads and are installed in assembly covers, UBDHB floor sockets and raised or false floor openings. They are made of stainless steel V2A. They have an IP protection level of IP 54 in an unused condition, a max. load capacity of 20 kN, an adjustment range of 55 mm, a min. installation height of 117 mm and installation dimensions of 307 mm.

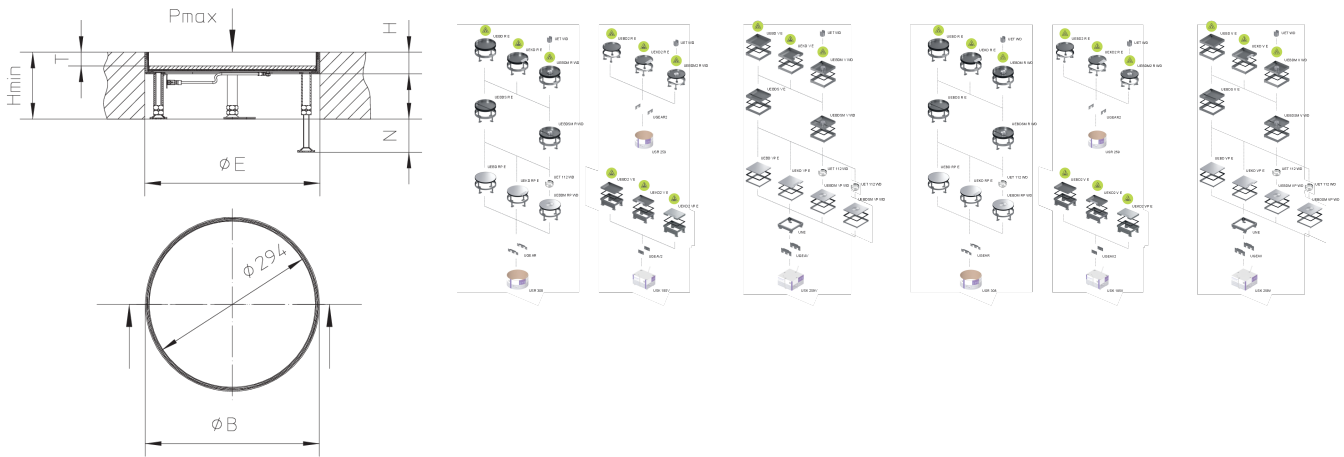


Products	H	H <sub>min</sub>	N	B	E	P <sub>max</sub>	IP <sub>n</sub>	T	mounting box	W
UEBDS 35-R6 E	38 mm	117 mm	55 mm	305 mm	307 mm	20,00 kN	IP-54	24 mm	3	7,161 kg
incl.:										
1 × UGD-R 10-2, 1 × UGDB15-R300 1.8, 1 × UGEAR-ELS										

**H:** height  
**H<sub>min</sub>:** minimum installation height  
**N:** levelling range  
**B:** width  
**E:** fitting dimension  
**P<sub>max</sub>:** maximum load  
**IP<sub>n</sub>:** IP protection level in unused condition  
**T:** Depth of flooring recess  
**mounting box:** maximum number of installable device casings  
**W:** Weight per storage unit

## DETAIL AND APPLICATION IMAGES





## OPTIONAL ACCESSORIES

UBDSLFL, UGM SLF



wet maintained



Load requirements according to, DIN EN 50085

