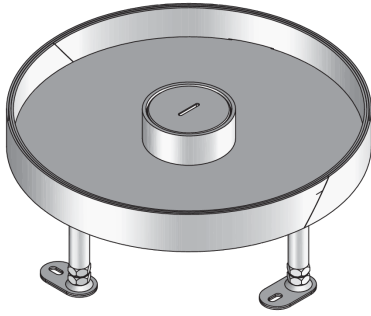


UEBDM R WD

Stainless steel tube cover unit, 3x, round



The UEBDM R WD are round tube cover units with an abutting edge accommodating max. three mounting boxes. They consist of a height-adjustable cartridge mounting frame with a tube outlet cartridge, a bolted mounting kit made of anodised aluminium and a rubber seal. The units are suitable for wet-cleaned rooms with office traffic loads. They are installed in floor sockets, assembly covers and raised or false floor openings. The cartridge, frame and base plate are made of stainless steel V2A with an IP protection class of IP 54 in an unused condition. They have a maximum load capacity of 2 kN, a levelling range of 55 mm, installation dimensions of 307 mm and are 305 mm wide.



Stainless steel, according to ASTM 304 / BS 304 S 3

Products	H	H _{min}	N	B	E	P _{max}	IP _g	IP _n	T	mounting box	W
UEBDM 15-R-WD	19 mm	100 mm	55 mm	304 mm	307 mm	2,00 kN	IP-22	IP-54	12,5 mm	3	2,499 kg
incl.: 1 × UGDB15-R300 1.8, 1 × UGD-R 10-2, 1 × UETD-R-WD											
UEBDM 25-R-WD	29 mm	110 mm	55 mm	304 mm	307 mm	2,00 kN	IP-22	IP-54	22 mm	3	2,810 kg
incl.: 1 × UETD-R-WD, 1 × UGDB15-R300 1.8, 1 × UGD-R 10-2											
UEBDM 35-R-WD	38 mm	117 mm	55 mm	305 mm	307 mm	2,00 kN	IP-22	IP-54	30 mm	3	4,246 kg
incl.: 1 × UGDB15-R300 1.8, 1 × UGD-R 10-2, 1 × UETD-R-WD											

H: height
H_{min}: minimum installation height
N: levelling range
B: width
E: fitting dimension
P_{max}: maximum load
IP_g: IP protection level in used condition



PRODUCT INFORMATION

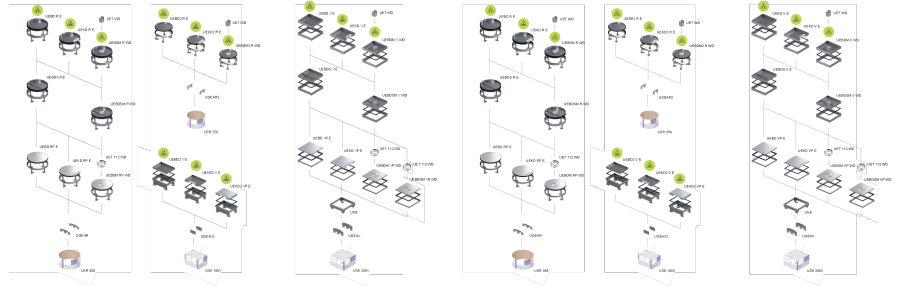
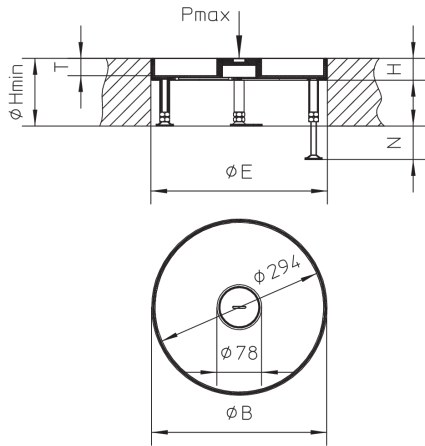
IP_n: IP protection level in unused condition

T: Depth of flooring recess

mounting box: maximum number of installable device casings

W: Weight per storage unit

DETAIL AND APPLICATION IMAGES



OPTIONAL ACCESSORIES

UEBDME R, UGEAR, UET WD, UBDSLFL, UGM SLF



wet maintained



Load requirements according to, DIN EN 50085

