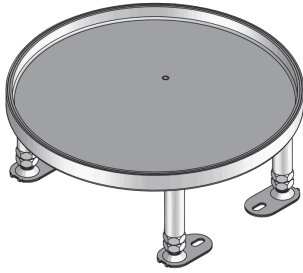


## UEBD2 R E

Stainless steel dummy cover unit, 2x, round



UEBD2 R E components are round dummy cover inserts. They consist of a cartridge mounting frame, a UGEAR-ELS earthing bracket, a rubber seal and a dummy insert cartridge for accommodating a maximum of two mounting boxes. The units are suitable for installation in UBDHB floor sockets, assembly covers and raised or false floor openings in wet-cleaned rooms with office traffic loads. Both the cartridges and the frames are made of stainless steel V2A. The cover units have an IP protection class of IP 54 in an unused condition, a maximum load capacity of 2 kN, an adjustment range of 55 mm, an installation dimension of 260 mm and a minimum installation height of 100 mm.



Stainless steel, according to ASTM 304 / BS 304 S 3

Products	H	H <sub>min</sub>	N	E	P <sub>max</sub>	IP <sub>n</sub>	T	mounting box	W
UEBD2 15-R E	18 mm	100 mm	55 mm	260 mm	2,00 kN	IP-54	12,5 mm	2	2,032 kg
incl.:									
1 × UGDB15-R300 1.8, 1 × UGEAR-ELS									
UEBD2 25-R E	28 mm	110 mm	55 mm	260 mm	2,00 kN	IP-54	22,5 mm	2	2,256 kg
incl.:									
1 × UGEAR-ELS, 1 × UGDB15-R300 1.8									

**H:** height

**H<sub>min</sub>:** minimum installation height

**N:** levelling range

**E:** fitting dimension

**P<sub>max</sub>:** maximum load

**IP<sub>n</sub>:** IP protection level in unused condition

**T:** Depth of flooring recess

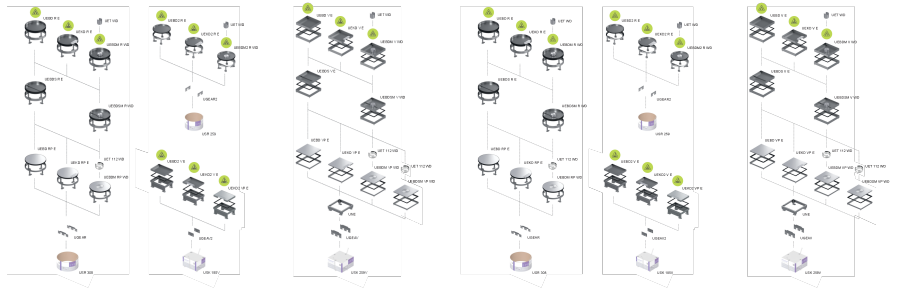
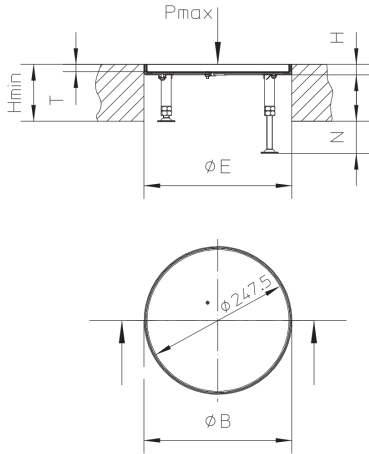
**mounting box:** maximum number of installable device casings

**W:** Weight per storage unit

## DETAIL AND APPLICATION IMAGES



# PRODUCT INFORMATION



## OPTIONAL ACCESSORIES

UBDSLFL, UGM SLF



wet maintained



Load requirements according to, DIN EN 50085

