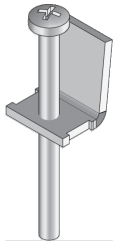


## UDKSEB

Claw, screed-flush



UDKSEB products are claws from the underfloor systems range. This accessory consists of a claw body and a matching button head screw. They are used in special applications when installing plastic or stainless steel installation units in screed-flush ducts. The claws are made of sendzimir hot-dip galvanised sheet steel in accordance with DIN EN 10346 and are available with a clamping range of 3 - 30 mm.

---

Products	k	W
UDKSEB	3 - 30 mm	0,010 kg

---

**k:** clamping range

**W:** Weight per storage unit

## OPTIONAL ACCESSORIES

UEBSMD 122R, UEBSMD 185V, UEBSMD 260R, UEBSMD 260V, UEBSMD 307R

