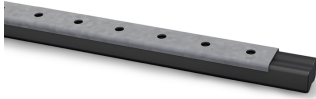


SWELLFLEX® Mounting Rail

For fastening bentonite swelling tapes to concrete



The SWELLFLEX® Mounting Rail is used to fasten the SWELLFLEX® bentonite swelling tape to the concrete surface. The rail is fixed in place using conventional fasteners. Approx. 5 nails are required per metre of SWELLFLEX® Mounting Rail (not included).

Products	weight
140200005113	0,500 kg

