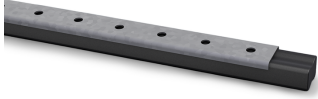


SWELLFLEX® Mounting Channel

For fastening bentonite swelling tapes to concrete



The SWELLFLEX® Mounting Channel is used to fasten the SWELLFLEX® bentonite swelling tape to the concrete surface. The channel is fixed in place using conventional fasteners. Approx. 5 nails are required per metre of SWELLFLEX® Mounting Channel (not included).

Products	Type	W
140200005113	Swell Schiene Metall	0,500 kg

W: Weight per storage unit

