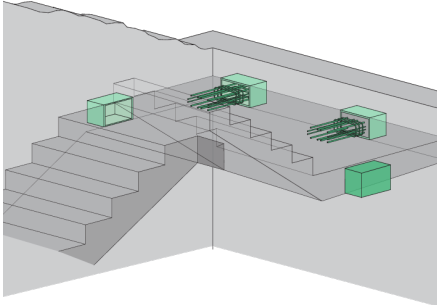


## SINTON® X

The impact sound insulation element SINTON® X decouples stair landings from masonry or concrete walls. SINTON® X consists of a polyurethane box with integrated elastomeric bearings for transferring loads, a filler for stabilisation during casting and a frame for fastening to the formwork. It is the basis for all other SINTON® X variants. Different forces can be transmitted depending on how the thrust bearings are placed.



Products		weight
410200020313	Sinton X1	1,250 kg
410200020314	Sinton X2	1,250 kg
410200020315	Sinton X3	1,250 kg

