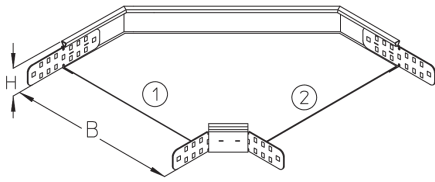


## RB 35

Cable tray bend, height = 35 mm



The cable tray bend RB 35 allows the direction of cable routing to be changed horizontally by 90°. They are suitable for cable trays with sides 35 mm high and have integrated side connectors. The bend is inserted into the cable tray and bolted in place using a VB floor connector. We provide components in various materials and surface finishes to ensure that the corrosion requirements are met for all sorts of applications.

steel, continuously hot galvanized/Sendzimir process

| Products  | H     | B      |      |            | W        |
|-----------|-------|--------|------|------------|----------|
| RB 35-05S | 35 mm | 50 mm  | 90 ° | HORIZONTAL | 0,311 kg |
| incl.:    |       |        |      |            |          |
| 2 × KLR   |       |        |      |            |          |
| RB 35-10S | 35 mm | 100 mm | 90 ° | HORIZONTAL | 0,481 kg |
| incl.:    |       |        |      |            |          |
| 2 × KLR   |       |        |      |            |          |
| RB 35-20S | 35 mm | 200 mm | 90 ° | HORIZONTAL | 0,900 kg |
| incl.:    |       |        |      |            |          |
| 2 × KLR   |       |        |      |            |          |
| RB 35-30S | 35 mm | 300 mm | 90 ° | HORIZONTAL | 1,500 kg |
| incl.:    |       |        |      |            |          |
| 2 × KLR   |       |        |      |            |          |

steel, batch/hot-dip galvanized

| Products  | H     | B      |      |            | W        |
|-----------|-------|--------|------|------------|----------|
| RB 35-05F | 35 mm | 50 mm  | 90 ° | HORIZONTAL | 0,335 kg |
| incl.:    |       |        |      |            |          |
| 2 × KLR E |       |        |      |            |          |
| RB 35-10F | 35 mm | 100 mm | 90 ° | HORIZONTAL | 0,517 kg |

Page 1

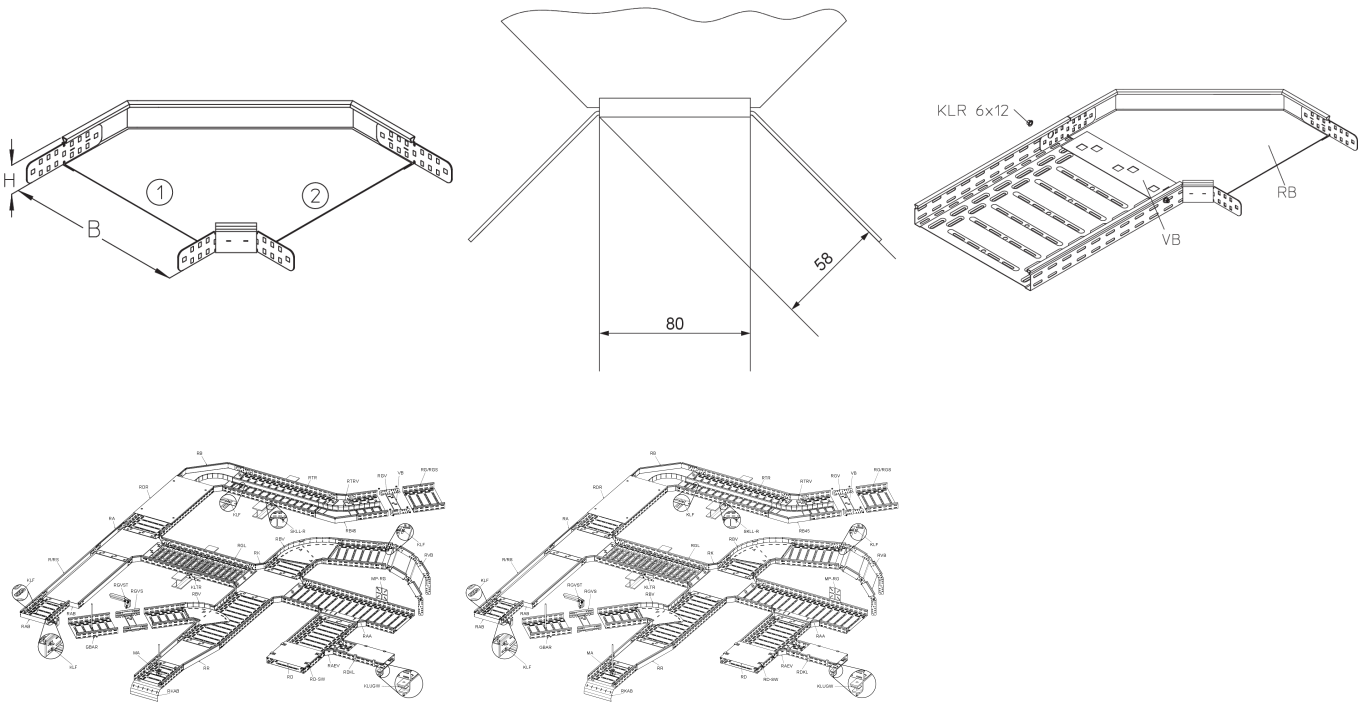


# PRODUCT INFORMATION

| Products            | H     | B      |      |            | W        |
|---------------------|-------|--------|------|------------|----------|
| incl.:<br>2 × KLR E |       |        |      |            |          |
| RB 35-20F           | 35 mm | 200 mm | 90 ° | HORIZONTAL | 0,965 kg |
| incl.:<br>2 × KLR E |       |        |      |            |          |
| RB 35-30F           | 35 mm | 300 mm | 90 ° | HORIZONTAL | 1,607 kg |
| incl.:<br>2 × KLR E |       |        |      |            |          |

**H:** height  
**B:** width  
**W:** Weight per storage unit

## DETAIL AND APPLICATION IMAGES



## OPTIONAL ACCESSORIES

RBD, RBDR, VB, RTRV 35

