

KWSS

Wall/strut bracket, very heavy

The wall bracket KWSS with welded-on back plate is intended for loads up to 10 kN. It is ideal for fastening wide-span trays and is made from hot-dip galvanised steel. F_D/P : factor for calculating the dowel load F_D with the actual bracket load P or the sum of the actual bracket loads. The stated load values only apply if the product is adequately anchored to the force-absorbing substrate or is attached to suspension struts in accordance with the instructions.

steel, batch/hot-dip galvanized

Products	H	B1	B2	L	P_{max}	F_D/P	W
KWSS 020F	290 mm	200 mm	280 mm	320 mm	10,00 kN	0,76	2,530 kg
KWSS 030F	320 mm	300 mm	380 mm	420 mm	10,00 kN	0,86	3,310 kg
KWSS 040F	360 mm	400 mm	480 mm	520 mm	10,00 kN	0,91	4,120 kg
KWSS 050F	390 mm	500 mm	580 mm	620 mm	10,00 kN	0,97	4,900 kg
KWSS 060F	360 mm	600 mm	680 mm	720 mm	10,00 kN	1,26	5,450 kg
KWSS 070F	390 mm	700 mm	780 mm	820 mm	10,00 kN	1,44	6,220 kg
KWSS 080F	425 mm	800 mm	880 mm	920 mm	10,00 kN	1,56	7,020 kg
KWSS 090F	455 mm	900 mm	980 mm	1020 mm	10,00 kN	1,66	7,790 kg
KWSS 100F	490 mm	1000 mm	1080 mm	1120 mm	10,00 kN	1,72	8,590 kg

H: height

B1: width

B2: width

L: length

P_{max} : maximum load

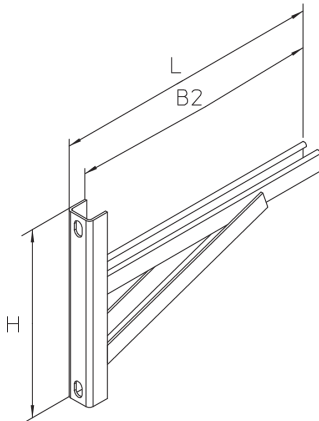
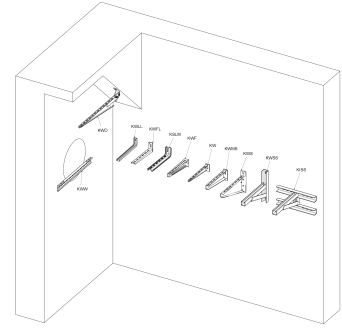
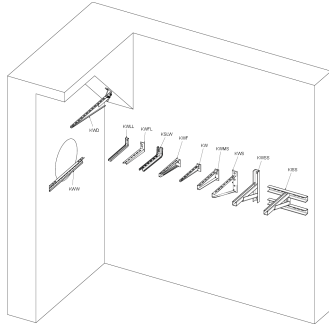
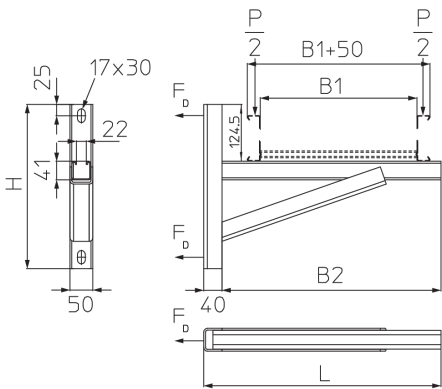
F_D/P : dowel-to-anchor load

W: Weight per storage unit

DETAIL AND APPLICATION IMAGES



PRODUCT INFORMATION



OPTIONAL ACCESSORIES

SD, WPHS-A, VAB-HB, VAS-AS, WLHS, WLKLA

