

KWS

Wall/strut bracket, heavy

The wall/strut bracket KWS with welded-on back plate is intended for loads up to 7 kN. It is ideal for fastening wide-span trays. We provide components in various materials and surface finishes to ensure that the corrosion requirements are met for all sorts of applications. The bracket KWS is also used as a strut bracket in the U support system. F_D/P : factor for calculating the dowel load F_D with the actual bracket load P or the sum of the actual bracket loads. The stated load values only apply if the product is adequately anchored to the force-absorbing substrate or is attached to suspension struts in accordance with the instructions.

steel, batch/hot-dip galvanized

Products	H	B1	B2	L	P_{max}	F_D/P	W
KWS 020F	215 mm	200 mm	280 mm	290 mm	7 kN	1,31	2,040 kg
KWS 030F	215 mm	300 mm	380 mm	390 mm	6,7 kN	1,49	2,400 kg
KWS 040F	215 mm	400 mm	480 mm	490 mm	6,5 kN	1,69	2,780 kg
KWS 050F	215 mm	500 mm	580 mm	592 mm	6,3 kN	1,91	3,320 kg
KWS 060F	215 mm	600 mm	680 mm	692 mm	6,1 kN	2,13	3,680 kg
KWS 070F	215 mm	700 mm	780 mm	792 mm	5,2 kN	2,60	4,040 kg
KWS 080F	215 mm	800 mm	880 mm	892 mm	4,4 kN	3,07	4,410 kg
KWS 090F	215 mm	900 mm	980 mm	992 mm	3,6 kN	3,56	4,770 kg
KWS 100F	215 mm	1000 mm	1080 mm	1092 mm	2,80 kN	4,06	5,140 kg

Stainless steel, according to ASTM 304 / BS 304 S 3

Products	H	B1	B2	L	P_{max}	F_D/P	W
KWS 020E	215 mm	200 mm	280 mm	290 mm	7 kN	1,31	1,920 kg
KWS 030E	215 mm	300 mm	380 mm	390 mm	6,7 kN	1,49	2,260 kg
KWS 040E	215 mm	400 mm	480 mm	490 mm	6,5 kN	1,69	2,610 kg
KWS 050E	215 mm	500 mm	580 mm	590 mm	6,3 kN	1,91	2,950 kg
KWS 060E	215 mm	600 mm	680 mm	690 mm	6,1 kN	2,13	3,290 kg
KWS 070E	215 mm	700 mm	780 mm	790 mm	5,2 kN	2,60	3,640 kg
KWS 080E	215 mm	800 mm	880 mm	890 mm	4,4 kN	3,07	3,970 kg



PRODUCT INFORMATION

Products	H	B1	B2	L	P _{max}	F _D /P	W
KWS 090E	215 mm	900 mm	980 mm	990 mm	3,6 kN	3,56	4,320 kg
KWS 100E	215 mm	1000 mm	1080 mm	1090 mm	2,80 kN	4,06	4,670 kg

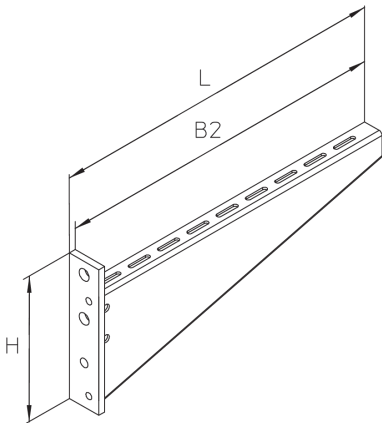
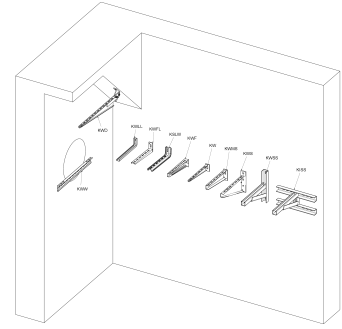
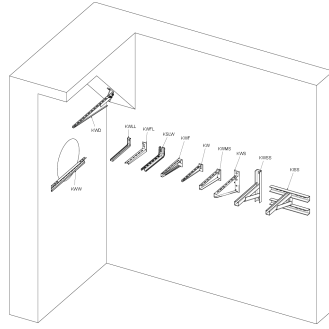
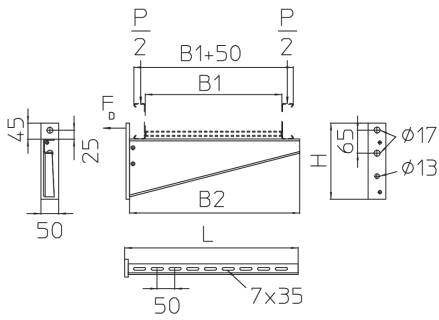
Stainless steel, according to ASTM 316 Ti / AISI 316 L, BS 320S17 / BS 316S11

Products	H	B1	B2	L	P _{max}	F _D /P	W
KWS 020E4	215 mm	200 mm	280 mm	290 mm	7 kN	1,31	1,920 kg
KWS 030E4	215 mm	300 mm	380 mm	390 mm	6,7 kN	1,49	2,260 kg
KWS 040E4	215 mm	400 mm	480 mm	490 mm	6,5 kN	1,69	2,610 kg
KWS 050E4	215 mm	500 mm	580 mm	590 mm	6,3 kN	1,91	2,950 kg
KWS 060E4	215 mm	600 mm	680 mm	690 mm	6,1 kN	2,13	3,290 kg
KWS 070E4	215 mm	700 mm	780 mm	790 mm	5,2 kN	2,60	3,640 kg
KWS 080E4	215 mm	800 mm	880 mm	890 mm	4,4 kN	3,07	3,970 kg
KWS 090E4	215 mm	900 mm	980 mm	990 mm	3,6 kN	3,56	4,320 kg
KWS 100E4	215 mm	1000 mm	1080 mm	1090 mm	2,80 kN	4,06	4,670 kg

H: height
B1: width
B2: width
L: length
P_{max}: maximum load
F_D/P: dowel-to-anchor load
W: Weight per storage unit

DETAIL AND APPLICATION IMAGES





OPTIONAL ACCESSORIES

SD, KDU 57, KHU 57, KLU, WPHS-K, KDU 60, KHU 60, KLR, WLHS, WLKL

