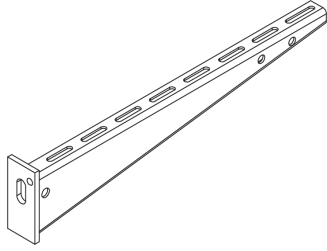


KW-BS



steel, batch/hot-dip galvanized

| Products | H | B | B1 | B2 | L | W |
|------------|--------|-------|--------|--------|--------|----------|
| KW-BS 010F | 45 mm | 40 mm | 100 mm | 120 mm | 124 mm | 0,130 kg |
| KW-BS 020F | 70 mm | 40 mm | 200 mm | 220 mm | 225 mm | 0,320 kg |
| KW-BS 030F | 70 mm | 40 mm | 300 mm | 320 mm | 326 mm | 0,438 kg |
| KW-BS 040F | 90 mm | 40 mm | 400 mm | 420 mm | 426 mm | 0,751 kg |
| KW-BS 050F | 110 mm | 40 mm | 500 mm | 520 mm | 528 mm | 1,325 kg |
| KW-BS 060F | 110 mm | 40 mm | 600 mm | 620 mm | 628 mm | 1,548 kg |

H: height

B: width

B1: width

B2: width

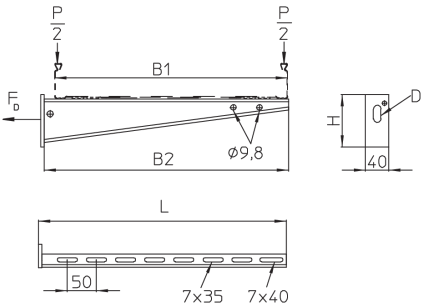
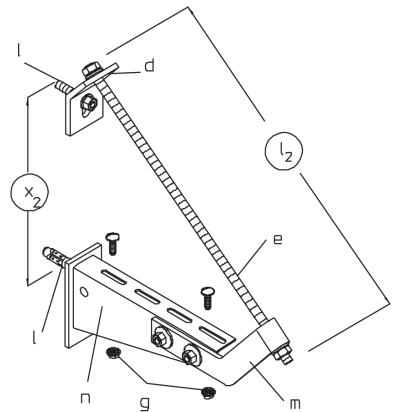
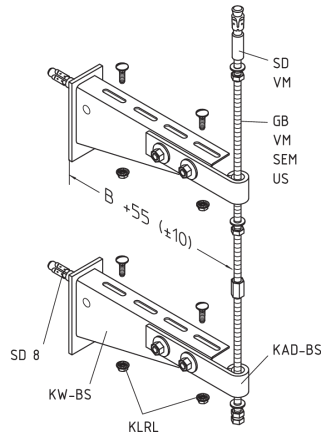
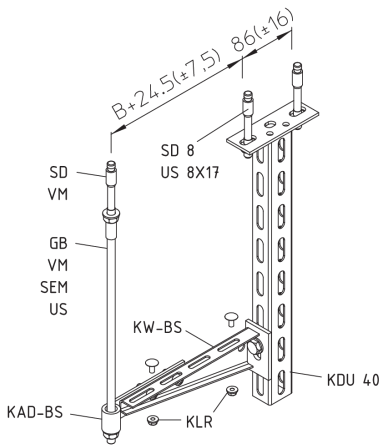
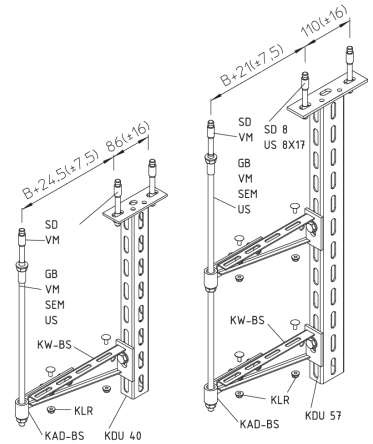
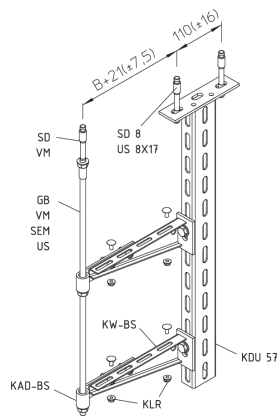
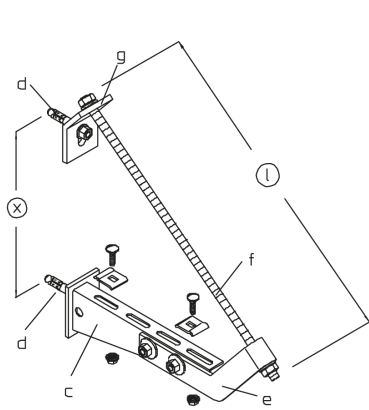
L: length

W: Weight per storage unit

DETAIL AND APPLICATION IMAGES



PRODUCT INFORMATION



L < 220, D=11x20
L >= 220, D=13x30

