

KUNEX® A

Construction joint tape, PVC-P, internal

Internal KUNEX® PVC-P construction joint tape reliably seals joints in concrete structures. It is installed in the centre of the concrete cross-section. The construction joint tapes are available according to DIN or with abP (German building code test certificate) in accordance with the factory standard. DIN joint tapes are available in bitumen-compatible versions on request. Joint tapes up to 320 mm wide with fixing eyelets on one or both sides can be supplied on request. The eyelets are spaced 200 mm apart. The eyelets replace the joint tape clips that would otherwise be required to fix the joint tapes in place.



factory standard with abP (not bitumen-compatible)

Products	B	Band width	Width expansion element	Thickness expansion element	Height anchor rib	W
120100002634 Kunex A100	100 mm	100 mm	47 mm	2 mm	8 mm	0,370 kg
120200002640 Kunex A150	150 mm	150 mm	55 mm	3 mm	15 mm	0,940 kg
120100002647 Kunex A190	190 mm	190 mm	60 mm	3 mm	15 mm	1,100 kg
120100002659 Kunex A240	240 mm	240 mm	80 mm	3,5 mm	15 mm	1,400 kg
120100002674 Kunex A320	320 mm	320 mm	100 mm	4,5 mm	15 mm	2,100 kg
120100002681 Kunex A500	500 mm	500 mm	150 mm	6 mm	20 mm	4,000 kg

DIN (not bitumen-compatible)

Products	B	Band width	Width expansion element	Thickness expansion element	Height anchor rib	W
120100002661 Kunex A240 DIN	240 mm	240 mm	80 mm	3,5 mm	15 mm	1,350 kg
120100002676 Kunex A320 DIN	320 mm	320 mm	100 mm	4,5 mm	15 mm	1,860 kg



PRODUCT INFORMATION

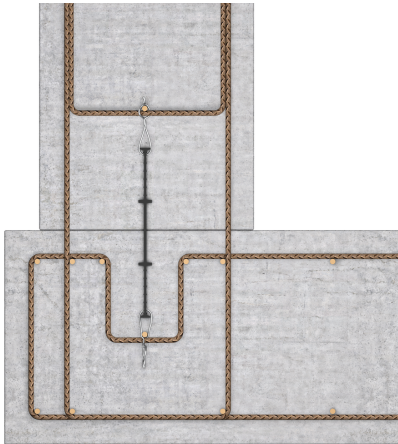
DIN BV (bitumen-compatible)

Products		B	Band width	Width expansion element	Thickness expansion element	Height anchor rib	W
120100002662	Kunex A240 DIN BV	240 mm	240 mm	80 mm	3,5 mm	15 mm	1,400 kg
120100002677	Kunex A320 DIN BV	320 mm	320 mm	100 mm	4,5 mm	15 mm	1,840 kg

B: width

W: Weight per storage unit

DETAIL AND APPLICATION IMAGES



OPTIONAL ACCESSORIES

Joint Tape Clip, Joint Sealing Tape FBV, Quarter Moon Knife, Sealing Tape



, P-5143/478/13 MPA BS

