

## KTW-R 10

Cable support trough, Ø 100 mm

The KTW-R 10 cable support tray with riveted back rail is used for routing cables on walls in a space-saving manner. It is available in a width of 118 mm and for cable diameters of 100 mm. It can be installed in one or more tiers. It is dowelled directly to the wall, but can also be attached to profile rails. Support intervals of 700 to 1000 mm must be observed when routing the cables. The cable support tray KTW-R 10 is made of hot-dip galvanized steel.

steel, batch/hot-dip galvanized

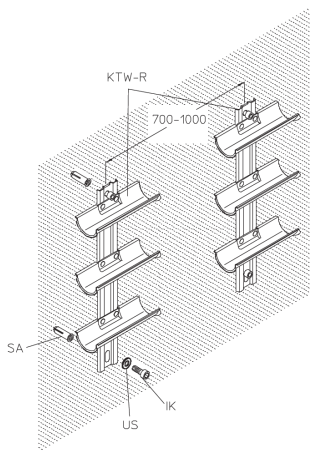
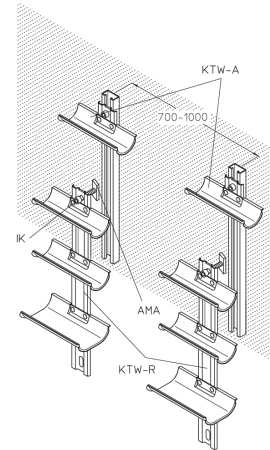
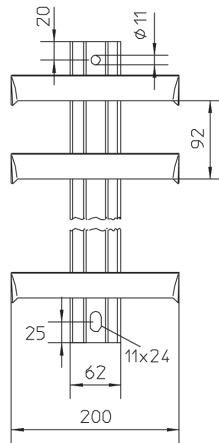
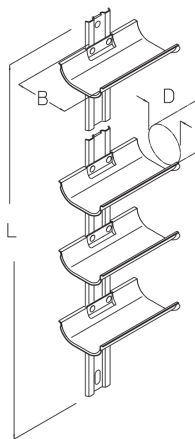
Products	B	L	D	W
KTW-R 10/2	118 mm	237 mm	100 mm	1,086 kg
KTW-R 10/3	118 mm	329 mm	100 mm	1,600 kg
KTW-R 10/4	118 mm	421 mm	100 mm	2,100 kg
KTW-R 10/5	118 mm	518 mm	100 mm	2,600 kg
KTW-R 10/6	118 mm	605 mm	100 mm	3,100 kg
KTW-R 10/7	118 mm	698 mm	100 mm	3,600 kg
KTW-R 10/8	118 mm	789 mm	100 mm	4,200 kg
KTW-R 10/9	118 mm	881 mm	100 mm	4,700 kg
KTW-R 10/10	118 mm	973 mm	100 mm	5,200 kg

**B:** width  
**L:** length  
**D:** diameter  
**W:** Weight per storage unit

## DETAIL AND APPLICATION IMAGES



# PRODUCT INFORMATION



## OPTIONAL ACCESSORIES

IK, SA, SAZ, SD, SSK

